



ENGINEERING DEPARTMENT

PROGRAM OF WORK

Project Title : ASPHALT OVERLAY OF ACCESS ROAD (6M x 75LM.) ALONG GEMIK
CONNECTING P. BALAGTAS

Location : CIVIL AVIATION COMPLEX

Estimated Start Date : Upon Approval

No. of Working Days : 7 Calendar Days

Appropriation : Php939,000.00

ITEM NO.	SCOPE OF WORKS TO BE DONE	% OF TOTAL	AMOUNT (Php)
I.	GENERAL REQUIREMENTS	[REDACTED]	[REDACTED]
II.	SURFACE COURSE		
	TOTAL		
	"say"		

DETAILED SUMMARY OF COST ESTIMATES

ITEM NO.	DESCRIPTION	QUANTITY	UNIT	UNIT COST (Php)	AMOUNT (Php)
I.	GENERAL REQUIREMENTS				[REDACTED]
a.	Mobilization/Demobilization	1.00	I.s.		
b.	Permits and Access Pass	1.00	I.s.		
	<i>Sub-Total I</i>				
ITEM NO.	DESCRIPTION	QUANTITY	UNIT	UNIT COST (Php)	AMOUNT (Php)
II.	SURFACE COURSE				[REDACTED]
a.	Prime Coat MC-70	191.00	sq.m.		
b.	Tack Coat SS-1	270.00	sq.m.		
c.	Hot Mixed Asphalt, 50mm thick (FDLRC)	461.00	sq.m.		
	<i>Sub-Total II</i>				
	TOTAL (I+II)				
				"say"	

Submitted by:

Checked by:

A
A

Endorsed by:

R.

Certificate of Budget and Funds Availability:

(Budget and Funds Availability)

Recommending Approval :

VP- Operations & Business Dev't. Group

Approved/Disapproved:

UNIT PRICE ANALYSIS



JOB : a. Mobilization/Demobilization
 ITEM : I. General Requirements
 QUANTITY : 1.00 I.s.

PRODUCTION RATE :
 NUMBER OF HOURS :

A) MATERIALS:	UNIT	QUANTITY	UNIT RATE	TOTAL COST
SUB-TOTAL (A)				
B) LABOR COST	QUANTITY		Rate	Total Cost
	No. of Personnel	Total Trips		
SUB-TOTAL (B)				
C) EQUIPMENT COST	UNIT		Rate	Total Cost
	UNIT	QUANTITY		
Mobilization/Demobilization	lot	1.00		
SUB-TOTAL (C)				
D) TOTAL DIRECT COST (A + B + C)				
E) ADD: INDIRECT COST	1. OCM (0% of D) 2. Contractor's Profit (0% of D)			
F) TOTAL INDIRECT COST				
G) VAT	5% of (D+E)			
G) TOTAL COST (D+E+F)				
	UNIT COST			

Prepared by:

Civil Engr. III

Civil Engr. IV

VM
Engr.

Checked by:

AN
AM-ED

UNIT PRICE ANALYSIS



JOB : b. Permits and Access Pass
 ITEM : I. General Requirements
 QUANTITY : 1.00 l.s.

PRODUCTION RATE :
 NUMBER OF HOURS :

A) MATERIALS:	UNIT	QUANTITY	UNIT RATE	TOTAL COST
Permits and Access Pass	lot	1.00		
SUB-TOTAL (A)				
B) LABOR COST	QUANTITY		Rate	Total Cost
	No. of Personnel	Total Trips		
SUB-TOTAL (B)				
C) EQUIPMENT COST	UNIT	QUANTITY	Rate	Total Cost
SUB-TOTAL (C)				
D) TOTAL DIRECT COST (A + B + C)				
E) ADD: INDIRECT COST				
	1. OCM (0% of D)			
	2. Contractor's Profit (0% of D)			
F) TOTAL INDIRECT COST				
F) VAT	5% of (D+E)			
G) TOTAL COST (D+E+F)				
	UNIT COST			

Prepared by:

Checked by:

Engr. IV

UNIT PRICE ANALYSIS



JOB : a. Prime Coat MC-70
 ITEMS : II. Surface Course
 QUANTITY : 191.00 sq.m.

PRODUCTION RATE : 300sq.m./hr.
 NUMBER OF HOURS : 0.64

A) MATERIALS:	UNIT	QUANTITY	UNIT RATE	TOTAL COST
Prime coat MC-70	drum	2.00		
SUB-TOTAL (A)				
B) LABOR COST	QUANTITY		Hourly Rate	Total Cost
	No. of Personnel	Total Hours		
Foreman	1	0.64		
Labor	3	0.64		
SUB-TOTAL (B)				
C) EQUIPMENT COST	QUANTITY		Hourly Rate	Total Cost
	No. of Equipment	Total Hours		
Asphalt distributor, 3000gals.	1	0.64		
SUB-TOTAL (C)				
D) TOTAL DIRECT COST (A + B + C)				
E) ADD: INDIRECT COST				
1. OCM (10% of D)				
2. Contractor's Profit (8% of D)				
TOTAL INDIRECT COST				
F) VAT	5% of (D+E)			
G)	TOTAL COST (D+E+F)			
	UNIT COST			

Prepared by:

P

Civil Engr. IV

A

Checked by:

ANT
AM-

UNIT PRICE ANALYSIS



JOB : b. Tack Coat, SS-1
 ITEMS : II. Surface Course
 QUANTITY : 270.00 sq.m.

PRODUCTION RATE : 300sq.m./hr.
 NUMBER OF HOURS : 0.90

A) MATERIALS:	UNIT	QUANTITY	UNIT RATE	TOTAL COST
Tack Coat, SS-1	drum	2.00		
SUB-TOTAL (A)				
B) LABOR COST	QUANTITY		Hourly Rate	Total Cost
	No. of Personnel	Total Hours		
Foreman	1	0.90		
Labor	3	0.90		
SUB-TOTAL (B)				
C) EQUIPMENT COST	QUANTITY		Hourly Rate	Total Cost
	No. of Equipment	Total Hours		
Asphalt distributor, 3000gals.	1	0.90		
SUB-TOTAL (C)				
D) TOTAL DIRECT COST (A + B + C)				
E) ADD: INDIRECT COST				
	1. OCM (10% of D)			
	2. Contractor's Profit (8% of D)			
TOTAL INDIRECT COST				
F) VAT	5% of (D+E)			
G)	TOTAL COST (D+E+F)			
	UNIT COST			

Prepared by:

Civil Engr. III

Civil Engr. IV

Engr. IV

Checked by:

UNIT PRICE ANALYSIS



JOB : c. Hot Mixed Asphalt, 50mm thick
 ITEMS : II. Surface Course
 QUANTITY : 461.00 sq.m.

PRODUCTION RATE :
 NUMBER OF HOURS :

A) MATERIALS:	UNIT	QUANTITY	UNIT RATE	TOTAL COST
Hot Mixed Asphalt, FDLRC Furnishing, Delivery, Laying, Rolling, Correction included	MT	54.20		
SUB-TOTAL (A)				
B) LABOR COST	QUANTITY		Hourly Rate	Total Cost
	No. of Personnel	Total Hours		
Included				
SUB-TOTAL (B)				
C) EQUIPMENT COST	QUANTITY		Hourly Rate	Total Cost
	No. of Equipment	Total Hours		
Included				
SUB-TOTAL (C)				
D) TOTAL DIRECT COST (A + B + C)				
E) ADD: INDIRECT COST				
1. OCM (10% of D) 2. Contractor's Profit (8% of D)				
TOTAL INDIRECT COST				
F) VAT	5% of (D+E)			
G) TOTAL COST (D+E+F)				
			UNIT COST	

Prepared by:

Checked by:

III

SPECIFICATIONS AND SCOPE OF WORKS
ASPHALT OVERLAY OF ACCESS ROAD ALONG GEMIK
CONNECTING P. BALAGTAS

SCOPE AND DESCRIPTION OF WORK

The Work to be done under this project consists of furnishing all labor, materials, tools, equipment, and facilities, including supervision for the proper completion of the project. Scope of work shall include but not be limited to the following:

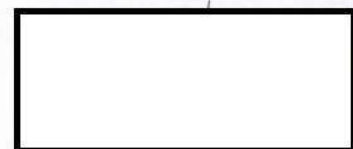
1. Site inspection and mobilization;
2. Site preparation;
3. Application of prime coat, MC-70 for 191.00 sq.m. area (fillet area included);
4. Application of tack coat, SS-1 for 270.00 sq.m.;
5. Asphalt overlay (DPWH item 310), 50mm thick, 461.00 sq.m. to include the furnishing, delivery, laying, rolling, and correction; and
6. Clean-up and Demobilization.

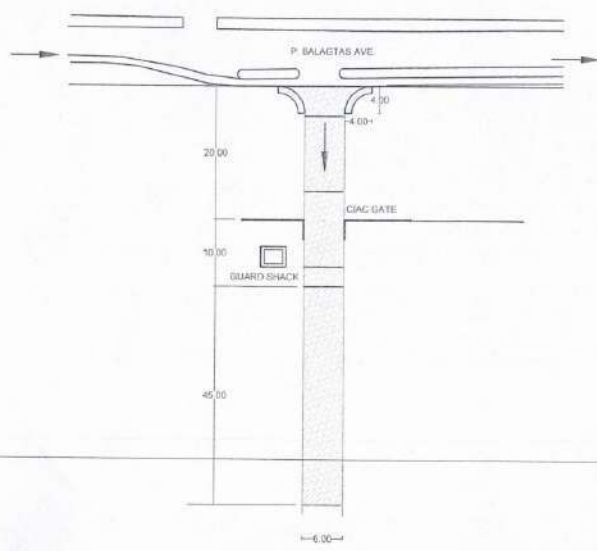
The Contractor's responsibilities:

- Secure required permit, access pass, tally-in/out from the Clark Int'l. Airport Corp. (CIAC) and Clark Development Corp. (CDC).
- Mobilize the required equipment, tools, and personnel to complete the work.
- Ensure the schedule of material delivery on-site.
- Execute the works as per the agreed schedule, standards, and norms.
- Ensure safety on-site and compliance with regulations
- Quality assurance and compliance with the DPWH specifications and methodology on roadway materials and workmanship.
- Removal of excess materials, and final site cleanup.
- Submit project reports complete with progress photos, and other project documents.

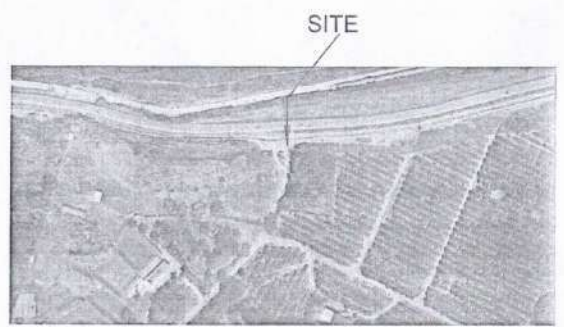


Site Verification Photos:

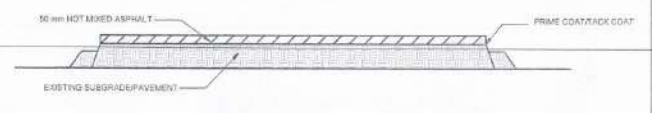




A LAYOUT
SCALE: NTS.



A VICINITY MAP
SCALE: NTS.



A SECTION
SCALE: NTS.

