



SITE ELEVATION



C VICINITY MAP  
A-1 NOT TO SCALE

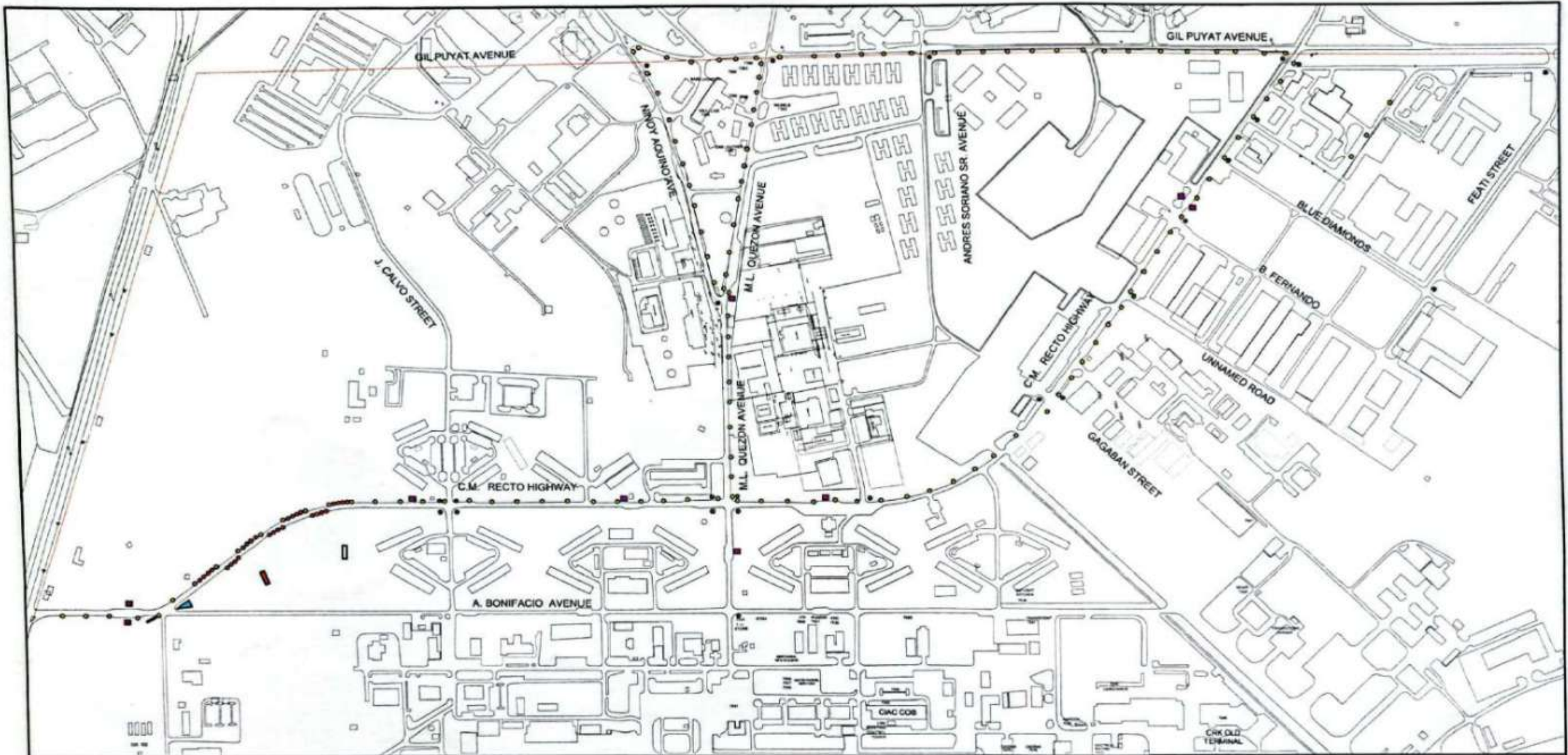


TABLE OF CONTENTS

ARCHITECTURAL	STRUCTURAL
A-1 PERSPECTIVE	
VICINITY MAP	
TABLE OF CONTENTS	
A-2 C.M. RECTO HIGHWAY PLAN	
A-3 GENERAL NOTES	
SITE PLAN	
TYPICAL MAJOR STREET LIGHT SECTION	
BLOW-UP DETAIL 'A' & 'B'	
TYPICAL LAMP POST BANNER SECTION	
A-4 GENERAL NOTES	
SITE PLAN	
TYPICAL TRAFFIC LIGHT SECTION	
BLOW-UP DETAIL 'A'	
WAYFINDER DETAIL	
A-5 GENERAL NOTES	
SCHEDULE OF EXISTING SIGNAGES	
SITE PLAN	
A-6 GENERAL NOTES	
SCHEDULE OF ROAD TRAFFIC SIGNAGES	ELECTRICAL
BLOW-UP DETAIL 'A'	
A-7 GENERAL NOTES	
TYPICAL PUV WAITING STATION PLAN, ROOF PLAN, FRONT & SIDE ELEVATION	
SECTION THRU 'A'	
SPOT AND SIGNAGE DETAIL A-D	
A-8 GENERAL NOTES	
PRINCE BALAGTAS AVENUE SITE PLAN	
AS FOUND WAYFINDERS A	
A-9 ROUNDABOUT WAYFINDERS A	
BLOW-UP DETAIL 'A'	
BLOW-UP DETAIL 'B'	
BLOW-UP DETAIL 'C'	
A-10 ROUNDABOUT WAYFINDERS B	
A-11 ROUNDABOUT SITE ELEVATION	
MARKER - PUBLIC ART DETAIL	
ROAD RIGHT OF WAY SITE SECTION	
A-12 GENERAL NOTES	
GL PUTAT SITE PLAN	
EXISTING SITE PHOTOS	
A-13 GENERAL NOTES	
GL PUTAT AVENUE SITE PLAN	
PRINCE BALAGTAS AVENUE SITE PLAN	PLUMBING
GATEWAY MARKER DETAIL	
A-14 GENERAL NOTES	
AIR FORCE CITY SITE PLAN	
TABLE OF EXISTING & PROPOSED MARKERS	
EXISTING MARKER 'A' DETAIL	
EXISTING MARKER 'B' DETAIL	
A-15 GENERAL NOTES	
CAC GATEWAY MARKER DETAIL	
INFORMATIVE SIGNAGE & POLE DETAIL	
FLOOD LIGHT DETAIL & SCHEDULE	
PYLON MARKER DETAIL	
A-16 LANDSCAPE PLAN	
A-17 LANDSCAPE PLAN	

REPUBLIC OF THE PHILIPPINES CLARK DEVELOPMENT CORPORATION
OFFICE OF THE BUILDING OFFICIAL
CLARK FREEPORT ZONE, PAMPANGA
LAND-USE AND ZONING
LINE AND GRADE
ARCHITECTURAL
STRUCTURAL
SANITARY
ELECTRICAL
MECHANICAL

	PREPARED BY:  <b>AR. DANILO V. LIVANAG</b> <small>SENIOR HEAD CLARK AIRPORT CITY DEVELOPMENT OF PUBLIC PARKS AND OPEN SPACES TASK FORCE</small>	CHECKED AND REVIEWED BY:  <b>AR. TERESITO G. GARCIA JR.</b> <small>SENIOR HEAD CLARK AIRPORT CITY DEVELOPMENT OF PUBLIC PARKS AND OPEN SPACES TASK FORCE</small>	INSTRUCTIONS ARE TO BE SHOWN TO CONTRACTOR BY ARCHITECTS PRIOR TO COMMENCEMENT OF WORKS. ALL MEASUREMENTS ARE TO BE TAKEN ON SITE BY THE CONTRACTOR. ALL DISCREPANCIES ARE TO BE IMMEDIATELY REPORTED TO THE ARCHITECTS & PROJECT/CONSTRUCTION MANAGERS. THE DRAWINGS, ATTACHED AS AN INSTRUMENT OF SERVICE, IS THE PROPERTY OF AN UNBIDABLE & CANNOT BE REPRODUCED BY THEIR WRITTEN CONSENT.	PROJECT: <b>IMPROVEMENT OF SITE DEVELOPMENT WITHIN CLARK AVIATION CAPITAL</b> <small>CLARK CIVIL AVIATION COMPLEX CLARK FREEPORT ZONE, MABALACAT, PAMPANGA</small>	APPROVED BY:  <b>ENGR. BRANDO C. AGUILERA</b> <small>VICE PRESIDENT FOR BUSINESS DEVELOPMENT AND OPERATIONS CLARK INTERNATIONAL AIRPORT CORPORATION</small>	SHEET CONTENTS: <b>SITE ELEVATION TABLE OF CONTENTS VICINITY MAP</b>	REVISIONS: <table border="1"> <tr><th>NO.</th><th>DATE</th><th>BY</th><th>REASON</th></tr> <tr><td> </td><td> </td><td> </td><td> </td></tr> </table>	NO.	DATE	BY	REASON					DRAWN BY: <b>RA</b> CHECKED BY: <b>RA</b> DATE: <b>AUG '23</b> SHEET NO: <b>A-1/17</b> FILE NO:
	NO.	DATE	BY	REASON												
PRC: 00000 PDR: 00000000 TIN: 000-000-000 PRC: 00000 PDR: 00000000 TIN: 000-000-000																


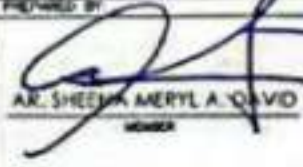
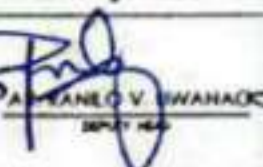

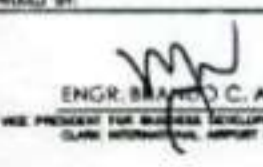


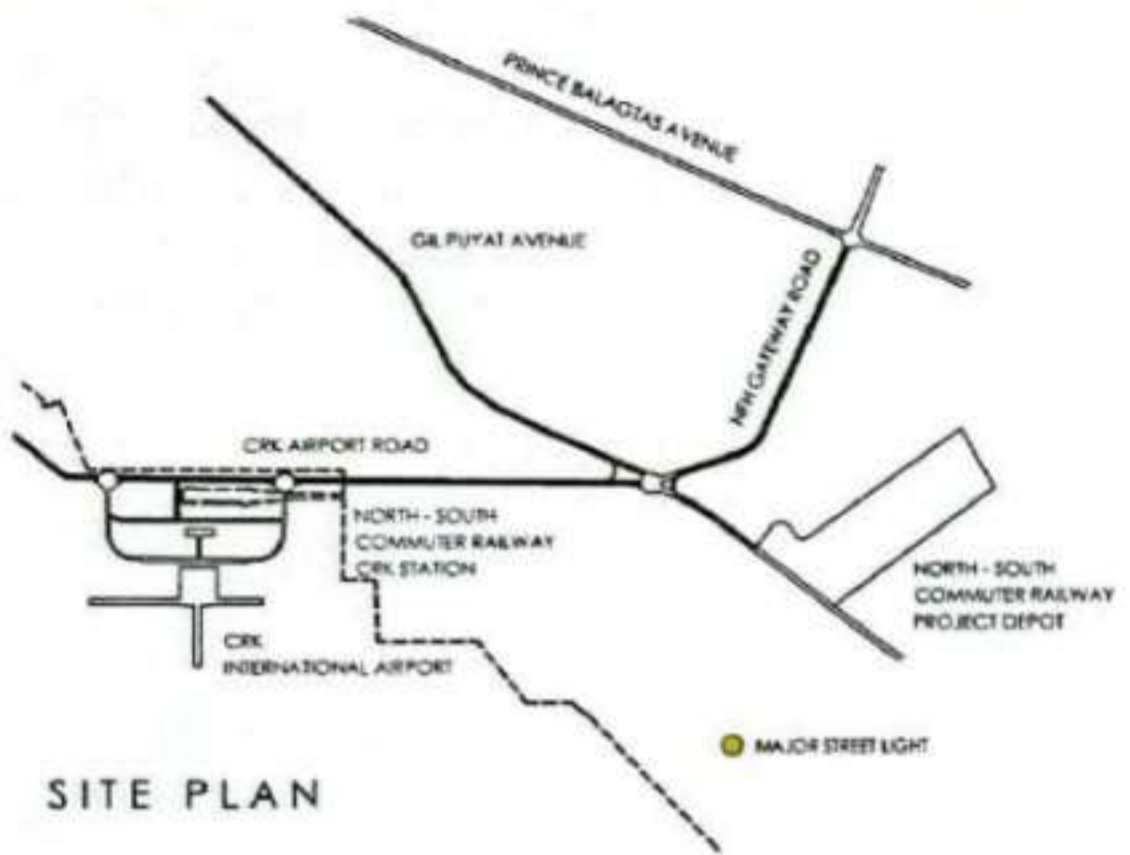
**LEGEND**

- WAITING SHED/PUBLICLY STATION
- PROPOSED RELOCATION FOR "AIRFORCE CITY" MARKER
- PROPOSED RELOCATION FOR "I LOVE CAB" MARKER
- PROPOSED LAMP POST BANNERS
- PROPOSED CLARK AIRPORT CITY GATEWAY MARKER
- PROPOSED DIGITAL BILLBOARD
- EXISTING STREET LIGHTS
- PROPOSED WAYFINDER SIGNAGES

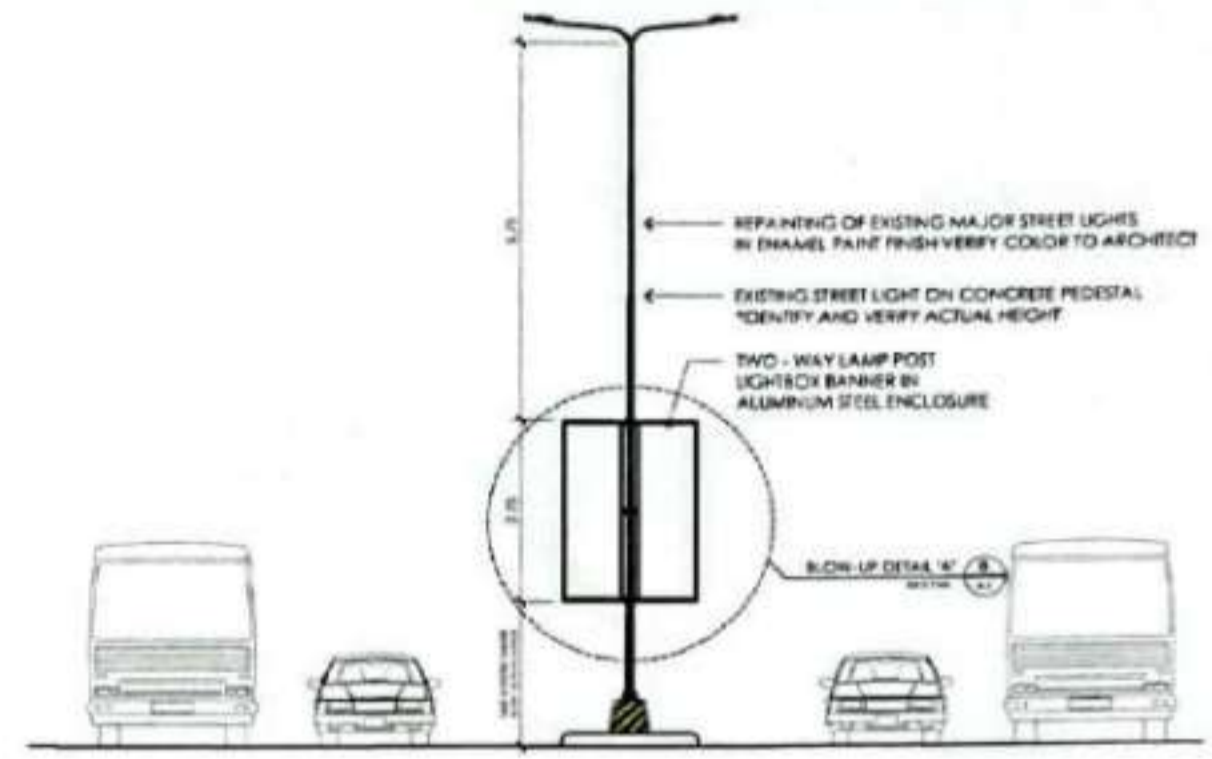
**A** C.M. RECTO HIGHWAY SITE PLAN  
**A-2** SCALE NTS



	PREPARED BY:  AR. SHEENA MERYL A. QUID <small>DESIGNER</small>	CHECKED AND REVIEWED BY:  AR. DANILLO V. IWANAGA <small>DEPUTY HEAD</small>	CHECKED AND REVIEWED BY:  AR. FEDERICO O. GARCIA JR. <small>HEAD</small>	PROJECT: <b>IMPROVEMENT OF SITE DEVELOPMENT WITHIN CLARK AVIATION CAPITAL</b> CLARK CIVIL AVIATION COMPLEX CLARK (RESPONSE ZONE, MABALACAT, PAMPANGA)	APPROVED BY:  ENGR. BRANDO C. AGUILERA <small>VICE PRESIDENT FOR BUSINESS DEVELOPMENT AND OPERATIONS          CLARK INTERNATIONAL AIRPORT CORPORATION</small>	SHEET CONTENTS: <b>C.M. RECTO HIGHWAY SITE PLAN</b>	REVISIONS: <table border="1" style="width: 100%; border-collapse: collapse;"> <thead> <tr> <th>NO.</th> <th>DESCRIPTION</th> <th>DATE</th> </tr> </thead> <tbody> <tr> <td> </td> <td> </td> <td> </td> </tr> <tr> <td> </td> <td> </td> <td> </td> </tr> <tr> <td> </td> <td> </td> <td> </td> </tr> <tr> <td> </td> <td> </td> <td> </td> </tr> </tbody> </table>	NO.	DESCRIPTION	DATE													DRAWN BY: <small> </small> CHECKED BY: <small> </small> DATE: <small> </small> SHEET NO.: <b>A-2 / 17</b>
NO.	DESCRIPTION	DATE																					



**SITE PLAN**



**ELEVATION**

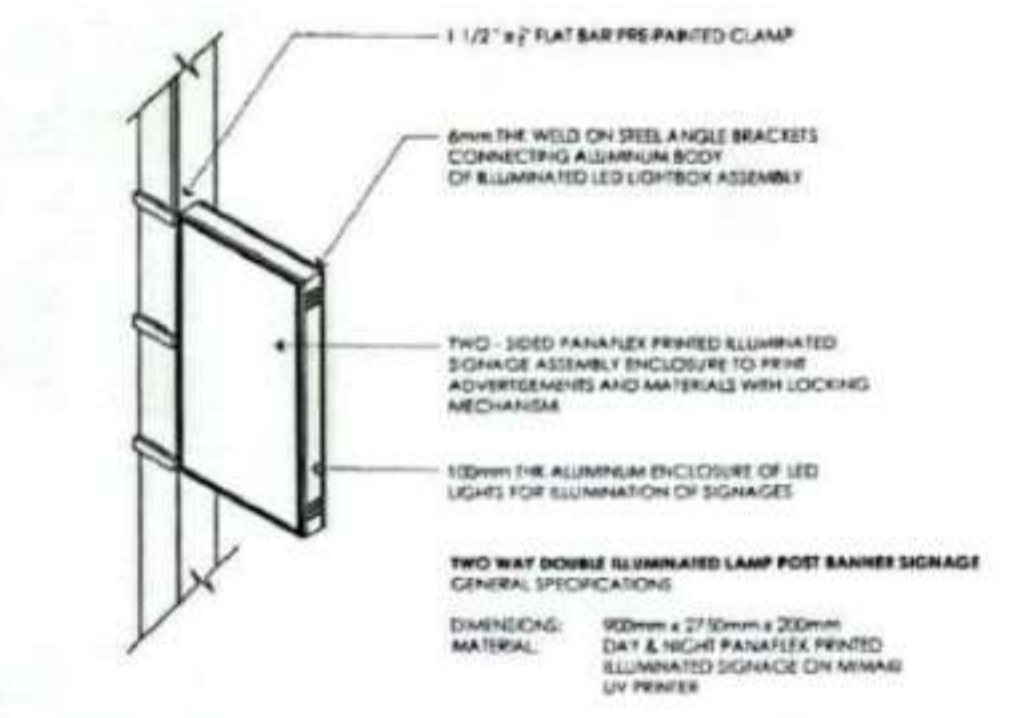
TWO WAY DOUBLE ILLUMINATED LAMP POST BANNER SIGNAGE

**QUANTITY:** FIFTY-SIX (56) SETS  
**LOCATION:** CRK AIRPORT ROAD RIGHT OF WAY MIDDLE AISLE (EVERY OTHER LAMP POST) (FROM PRINCE BALAGTAS ROUNDABOUT UP TO CRK ROUNDABOUT BEFORE ELEVATED ROAD)  
 GIL PUYAT AVENUE MIDDLE AISLE FROM DINOSAUR ISLAND TO CFZ GUARDHOUSE  
**REMARKS:** LAMP POST BANNERS TO BE TAPPED TO NEAREST STREET LIGHT POWER SOURCE

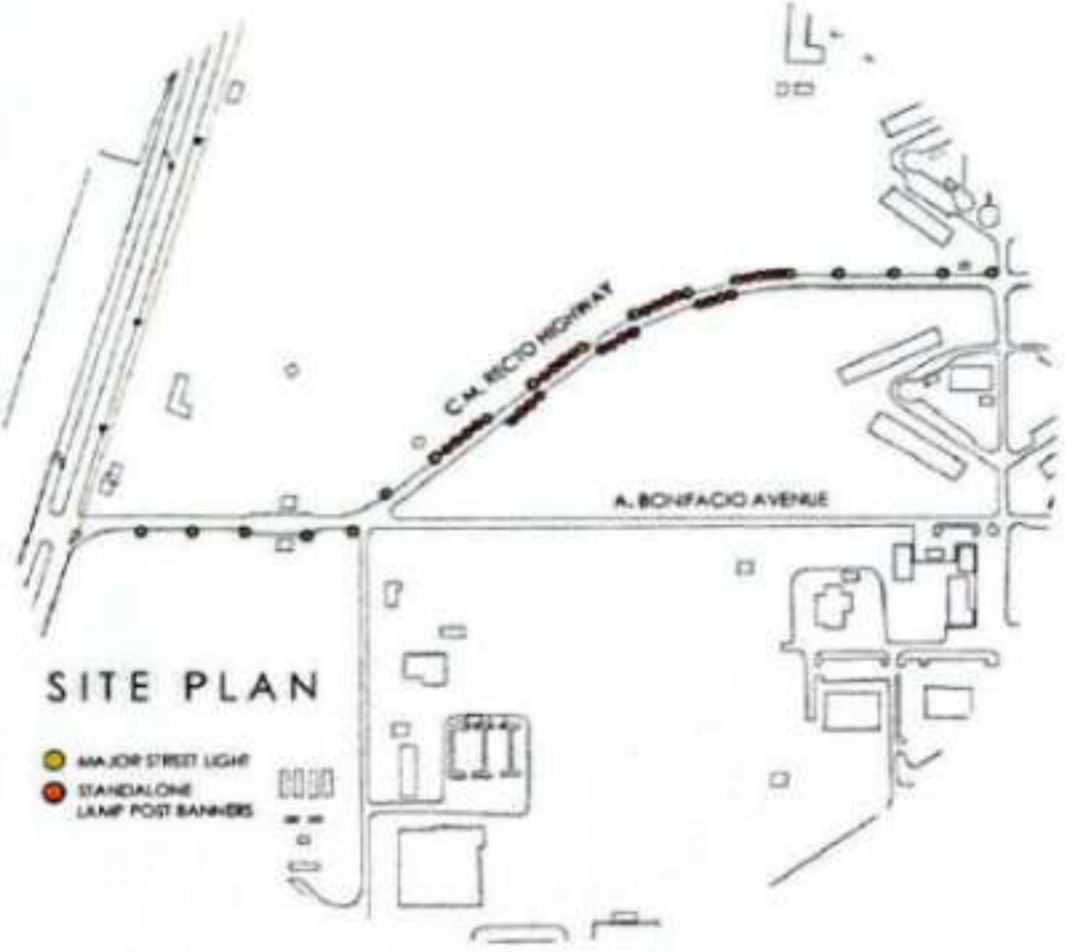
**A TYPICAL MAJOR STREET LIGHT SECTION**  
 SCALE 1:7.5M

**INSTALLATION OF ILLUMINATED LAMP POST BANNERS**

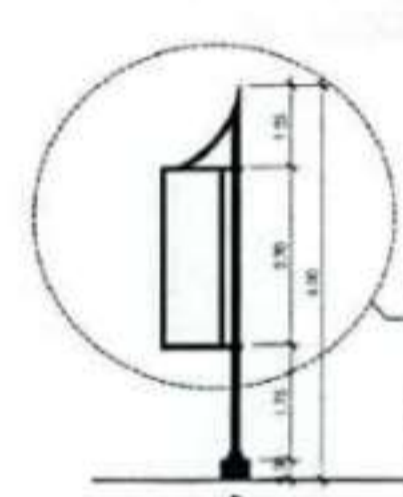
- SCOPE OF WORKS**  
 THE CONTRACTOR SHALL FULLY CONSTRUCT AND INSTALL THE FOLLOWING WORKS:
- FABRICATION AND INSTALLATION OF LAMP POST BANNERS ON THE IDENTIFIED NUMBER AND LOCATION OF EXISTING MAJOR STREET LIGHTS ALONG THE CRK AIRPORT ROAD FROM THE PRINCE BALAGTAS AVENUE ROUNDABOUT UP TO THE CRK ROUNDABOUT BEFORE THE ELEVATED ROAD AND GIL PUYAT AVENUE FROM DINOSAUR ISLAND UP TO THE CFZ GUARDHOUSE
  - IMPROVEMENT OF EXISTING MAJOR STREET LIGHTS
    - REPAINTING OF ALL IDENTIFIED EXISTING MAJOR STREET LIGHTS
  - ADDITIONAL LAMP POST BANNERS ALONG C.M. RECTO HIGHWAY
    - INSTALLATION OF LAMP POST BANNER WITH POLE AND CONCRETE PEDESTAL
    - CONDUCT NECESSARY EXCAVATION, BACK-FILLING AND OTHER GROUND CIVIL WORKS
  - ELECTRICAL WORKS CONCERNING THE INSTALLATION OF ALL LAMP POST BANNERS WHICH INCLUDES BUT NOT LIMITED TO:
    - ELECTRICAL LIGHTING CABLE LAYING
    - ELECTRICAL POWER CABLE LAYING (IF NECESSARY)
    - ELECTRICAL TAPPING TO NEAREST POWER SOURCE FOR THE LAMP POST BANNERS
    - AND ALL OTHER NECESSARY ELECTRICAL WORKS TO MAKE THE LAMP POST BANNERS OPERATIONAL
  - CONTRACTOR TO FURNISH ALL SHOP DRAWINGS AND VERIFICATION OF LOCATIONS ACCORDING TO ACTUAL SITE CONDITIONS FOR THE APPROVAL OF END-USER
  - CONTRACTOR TO CONDUCT NECESSARY GROUND MAINTENANCE AND RESTORATION WORKS FOR ANY DISRUPTION AND DESTRUCTION ON AFFECTED SITE DEVELOPMENTS WITHIN CLARK AIRPORT CITY



**B BLOW-UP DETAIL 'A'**  
 SCALE NTS



**SITE PLAN**



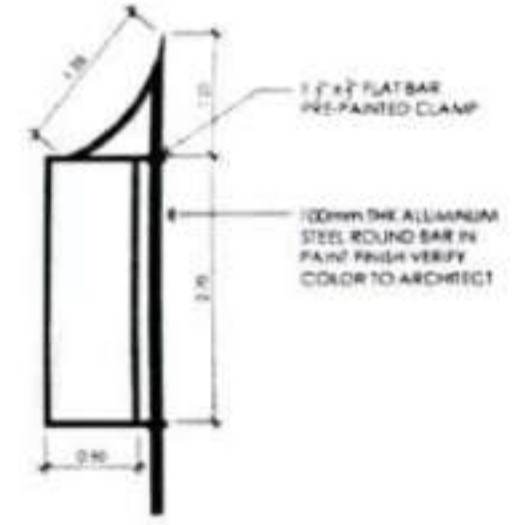
**ELEVATION**

TWO WAY SINGLE ILLUMINATED LAMP POST BANNER SIGNAGE

**D BLOW-UP DETAIL 'B'**  
 SCALE NTS

**C TYPICAL LAMP POST BANNER SECTION**  
 SCALE 1:7.5M

**QUANTITY:** THIRTY (30) UNITS  
**DIMENSIONS:** 900mm x 2750mm x 200mm  
**MATERIAL:** TWO SIDED GLASS COVER FOR PRINT ADVERTISEMENTS AND MATERIALS AND ALUMINUM ENCLOSED LED LIGHTING ASSEMBLY  
**REMARKS:** DETAILS SIMILAR TO LAMP POST BANNERS TO BE PLACED ALONG MAJOR STREET LIGHTS

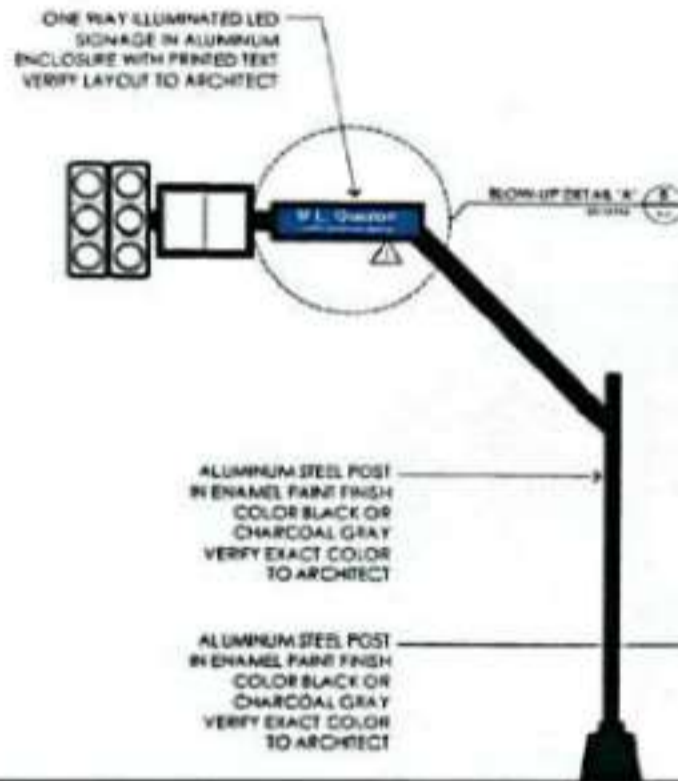


	PREPARED BY: AN SHEEN MERYLA A. DAVID MEMBER	CHECKED AND REVIEWED BY: AR RANILO V. LUNA HAO SUPERVISOR	DESIGNED AND DRAWN BY: AR RANILO V. LUNA HAO SUPERVISOR	PROJECT: IMPROVEMENT OF SITE DEVELOPMENT WITHIN CLARK AVIATION CAPITAL CLARK CIVIL AVIATION COMPLEX CLARK FREIGHT ZONE, MABALACAT, PAMPANGA	APPROVED BY: ENGR. BRANIMAR C. AGUIERA VICE PRESIDENT FOR BUSINESS DEVELOPMENT AND OPERATIONS CLARK INTERNATIONAL AIRPORT CORPORATION	SHEET CONTENTS: GENERAL NOTES SITE PLAN TYPICAL MAJOR STREET LIGHT SECTION BLOW-UP DETAIL 'A' & 'B' TYPICAL LAMP POST BANNER SECTION	REVISIONS: NO.   DATE   DESCRIPTION   BY   DATE	SHEET PLANS: NO.   BULLETIN   CHECKED BY:   DATE   SHEET NO.
	FOR PRINT FOR CONSTRUCTION COST ESTIMATE FOR QUOTATION FOR APPROVAL OTHER:	A-3 / 17 FILE NO.						

### INSTALLATION OF VARIOUS ILLUMINATED OUTDOOR SIGNAGES

SCOPE OF WORKS  
THE CONTRACTOR SHALL FULLY CONSTRUCT AND INSTALL THE FOLLOWING WORKS:

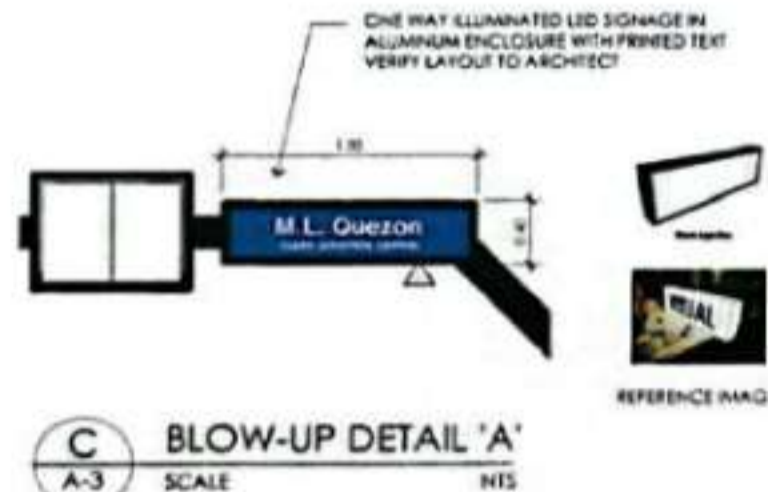
1. FABRICATION AND INSTALLATION OF ILLUMINATED TRAFFIC LIGHT STREET SIGNAGES ON THE IDENTIFIED LOCATIONS ALONG MAJOR AND MINOR THOROUGHFARES, HIGHWAYS AND STREETS.
2. REPAINTING OF EXISTING TRAFFIC LIGHTS ALONG C.M. RECTO HIGHWAY INCLUDING PEDESTRIAN TRAFFIC LIGHTS
3. FABRICATION AND INSTALLATION OF ILLUMINATED WAYFINDERS ON THE IDENTIFIED LOCATIONS ALONG MAJOR AND MINOR THOROUGHFARES, HIGHWAYS AND STREETS.
4. GROUND CIVIL WORKS
  - 4.1. CONDUCT NECESSARY ENCAVATION, BACK-FILLING AND OTHER GROUND CIVIL WORKS NECESSARY FOR THE INSTALLATION OF THE CORRESPONDING VARIOUS SIGNAGES
5. ELECTRICAL WORKS CONCERNING THE INSTALLATION OF ALL LAMP POST BANNERS WHICH INCLUDES BUT NOT LIMITED TO:
  - 5.1. ELECTRICAL LIGHTING CABLE LAYING
  - 5.2. ELECTRICAL POWER CABLE LAYING (IF NECESSARY)
  - 5.3. ELECTRICAL TAPPING TO NEAREST POWER SOURCE FOR THE SIGNAGES AND ALL OTHER NECESSARY ELECTRICAL WORKS TO MAKE THE SIGNAGES OPERATIONAL.
6. CONTRACTOR TO FURNISH ALL SHOP DRAWINGS AND VERIFICATION OF LOCATIONS ACCORDING TO ACTUAL SITE CONDITIONS FOR THE APPROVAL OF END-USER.
7. CONTRACTOR TO CONDUCT NECESSARY GROUND MAINTENANCE AND RESTORATION WORKS FOR ANY DISRUPTION AND DISTURBANCE ON AFFECTED SITE DEVELOPMENTS WITHIN CLARK AIRPORT CITY



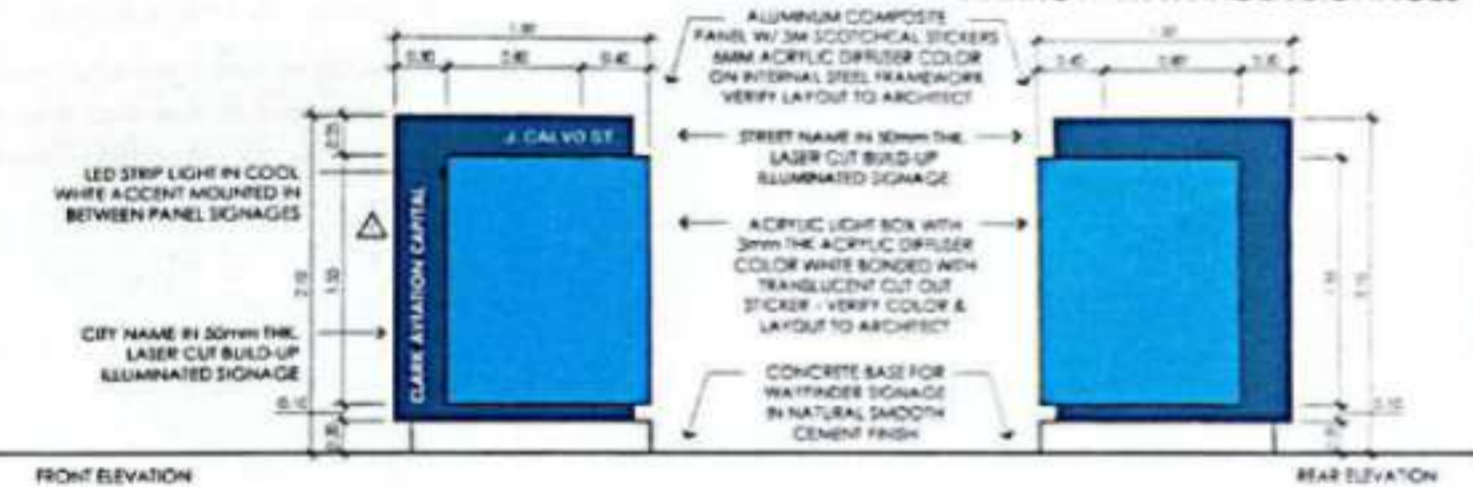
#### ELEVATION REPAIR AND IMPROVEMENT OF EXISTING TRAFFIC LIGHTS

QUANTITY: TEN (10) UNITS  
LOCATION: C.M. RECTO HIGHWAY COR. J. CALVO STREET  
C.M. RECTO HIGHWAY COR. M.L. QUEZON AVENUE  
SCOPE: REPAINTING OF TRAFFIC LIGHTS  
REPAIR OF DAMAGED TRAFFIC LIGHTS (INCLUDING PEDESTRIAN)

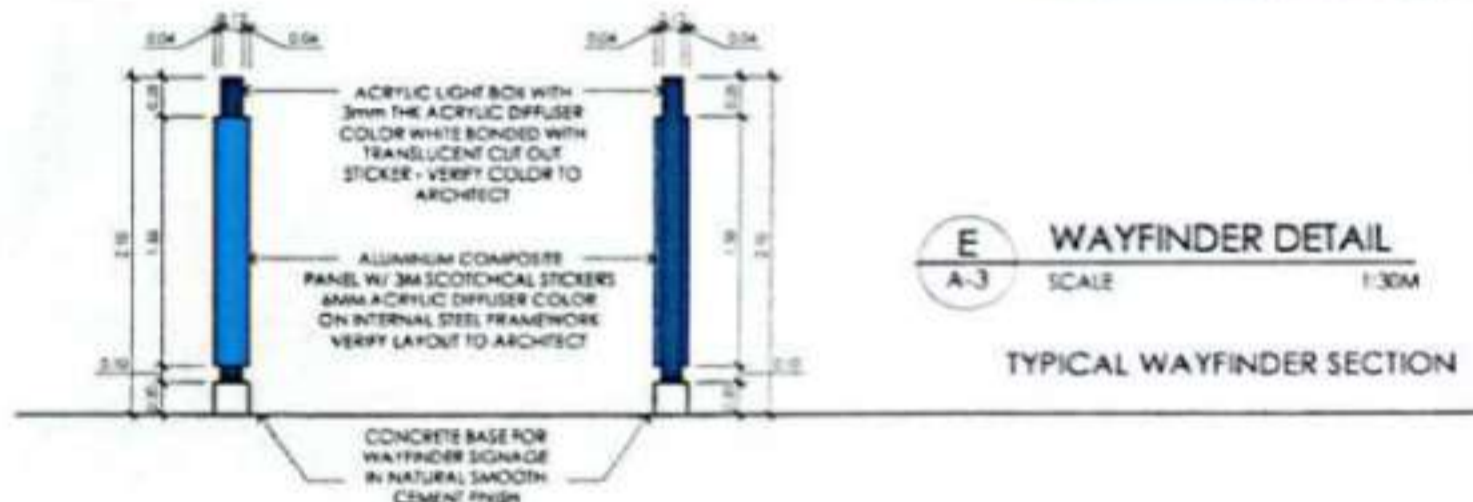
**A** TYPICAL TRAFFIC LIGHT SECTION  
SCALE 1:75M



#### NARROW WAYFINDER SIGNAGES



#### WIDE WAYFINDER SIGNAGES



#### ELEVATION TWO WAY STREET 'NARROW' WAYFINDER SIGNAGES

QUANTITY: THIRTEEN (13) UNITS  
LOCATION: C.M. RECTO HIGHWAY CORNER J. CALVO STREET, M.L. QUEZON AVENUE, RINCON AGUIRO AVENUE, ANDRES BORGAN SR. STREET, UNNAMED ROAD, GAGABAN STREET, BERNARDO STREET, BLUE DIAMONDS STREET  
REMARKS: CONCRETE BASE ABOVE GRADE LINE

#### ELEVATION TWO WAY STREET 'WIDE' WAYFINDER SIGNAGES

QUANTITY: TWELVE (12) UNITS  
LOCATION: C.M. RECTO HIGHWAY CORNER J. CALVO STREET, M.L. QUEZON AVENUE, RINCON AGUIRO AVENUE, ANDRES BORGAN SR. STREET, UNNAMED ROAD, GAGABAN STREET, BERNARDO STREET, BLUE DIAMONDS STREET  
REMARKS: CONCRETE BASE ABOVE GRADE LINE



#### SITE PLAN

	PREPARED BY: MERVIL A. DAVID AR RANEO V. LUNANG	DESIGNED AND REVIEWED BY: AR RANEO V. LUNANG AR RANEO V. LUNANG	PROJECT: IMPROVEMENT OF SITE DEVELOPMENT WITHIN CLARK AVIATION CAPITAL CLARK CIVIL AVIATION COMPLEX CLARK FREEPORT ZONE, MABALACAT, PAMPANGA	APPROVED BY: ENGR. BERNARDO C. AGUIRERA VICE PRESIDENT FOR BUSINESS DEVELOPMENT AND OPERATIONS CLARK INTERNATIONAL AIRPORT CORPORATION	SHEET CONTENTS: GENERAL NOTES SITE PLAN TYPICAL TRAFFIC LIGHT SECTION BLOW-UP DETAIL 'A' WAYFINDER DETAIL	REVISIONS: NO.   DATE   DESCRIPTION 1   11/17/2017	NO.   DATE   DESCRIPTION 1   11/17/2017	CHECKED BY: DATE: 11/17/2017 SHEET NO.: A-4 / 17
	GENERAL NOTES: 1. ALL SIGNAGES SHALL BE INSTALLED IN ACCORDANCE WITH THE LATEST VERSIONS OF THE SIGNAGE MANUAL. 2. ALL SIGNAGES SHALL BE MAINTAINED IN GOOD CONDITION AT ALL TIMES. 3. ALL SIGNAGES SHALL BE INSTALLED IN ACCORDANCE WITH THE LATEST VERSIONS OF THE SIGNAGE MANUAL. 4. ALL SIGNAGES SHALL BE MAINTAINED IN GOOD CONDITION AT ALL TIMES.							

**SCHEDULE OF EXISTING WAYFINDING SIGNAGES**

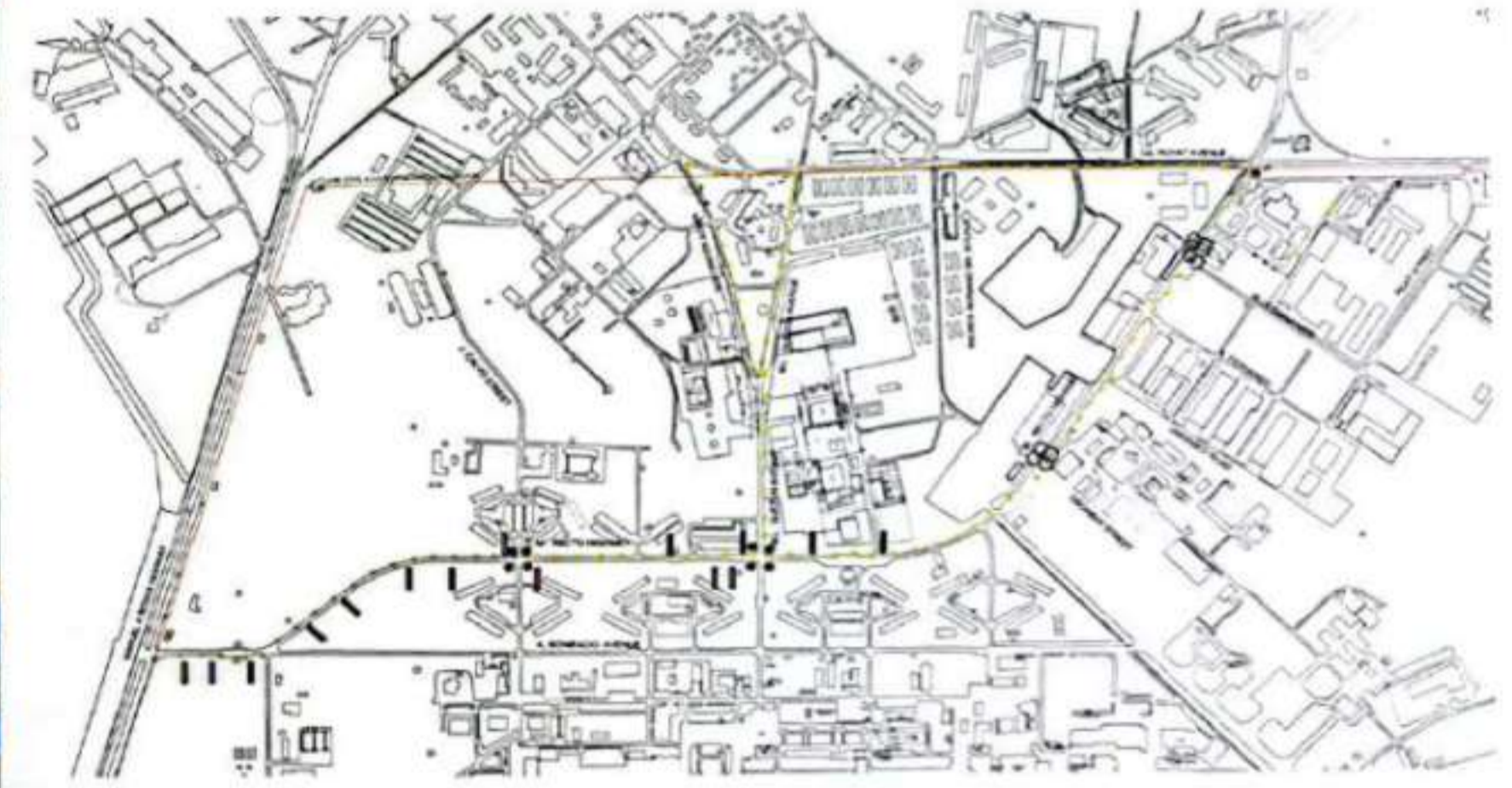
**SCHEDULE OF EXISTING TRAFFIC AND STREET SIGNAGES**

LOCATION	SIGNAGE / ITEM	QTY	ACTION / REMARKS	PHOTO	LOCATION	SIGNAGE / ITEM	QTY	ACTION / REMARKS	PHOTO
CM RECTO HIGHWAY - MA ROXAS HIGHWAY	OBSERVE TRAFFIC RULES	1	REMOVE		CM RECTO HIGHWAY - ML QUEZON AVENUE	LOW HOUSE SIGNAGE	1	REMOVE	
	AIR FORCE CITY PARK TOURIST INFO SIGN	1	REPAIR			UNNECESSARY DILAPIDATED SIGNAGE	2	REMOVE	
	AIRCRAFT PARK ENTRANCE	1	REPLACE / IMPROVE			CRK GREEN DIRECTIONAL SIGNAGE	1	REPLACE	
	AIR DEFENSE WAY FINDER	1	REPLACE			STOP SIGN	1	REPLACE	
	AIR FORCE BILLBOARD	1	REPLACE			7-ELEVEN SIGNAGE	1	REMOVE	
	"YOU ARE ENTERING CLARK AIR BASE" SIGN	1	REPLACE			MAIN GATE GREEN DIRECTIONAL SIGNAGE	1	REPLACE	
	WELCOME TO CLARK AIR BASE SIGN	1	REPLACE			BCDA PMD WAYFINDER SIGNAGE	1	REMOVE	
CM RECTO HIGHWAY - J CALVO STREET	BUS STOP	1	REPAIR		CM RECTO HIGHWAY - GAGABAN STREET	NAEC NORTH SIGNAGE	1	REMOVE	
	CRK GREEN DIRECTIONAL SIGNAGE	1	REPLACE	AEROTECT SIGNAGE		1	REMOVE		
	FIRST TO STOP FIRST TO GO	2	REPLACE (INCLUDE IN THE STOP SIGN)	LEADING EDGE SIGNAGE		1	REMOVE		
	THIS WAY TO HARBOR	1	REPLACE	CORNER SIGNAGE		1	REMOVE		
	THIS WAY TO 2ND ARCEEN	1	REPLACE	CM RECTO HIGHWAY - BLUE DIAMONDS ST	WINGLOBAL SIGNAGE	1	REMOVE		
					TGA SIGNAGE	1	REMOVE		
CM RECTO HIGHWAY - ML QUEZON AVENUE	BUS STOP	1	REPLACE	GIL PUYAT ROUNDABOUT MABALACAT ENTRY	J101 SIGNAGE	1	REMOVE		
	OBSERVE TRAFFIC RULES SIGN	2	REPLACE (IN PHOTO) REMOVE (IN INTERSECTION)		THE MANSION SIGNAGE	1	REMOVE		
	AIR DEFENSE COMMAND WAY FINDER	1	REPLACE		DUTY FREE SIGNAGE	1	REMOVE		
	COMMERCIAL CENTER WAY FINDER	1	REPLACE		CLARK WATER SIGNAGE	1	REMOVE		
CM RECTO HIGHWAY - ML QUEZON AVENUE				PRINCE BALAGTAS ROUNDABOUT	CRK MARKER	2	REPLACE		
					MANILA MARKER	1	REFURBISH		
					CRK MARKER	1	REFURBISH		
					CFZ MARKER	1	REFURBISH		

LOCATION	SIGNAGE / ITEM	QTY	ACTION / REMARKS	PHOTO	LOCATION	SIGNAGE / ITEM	QTY	ACTION / REMARKS	PHOTO
PRINCE BALAGTAS ROUNDABOUT	NCC MARKER	1	REFURBISH		PRINCE BALAGTAS ROUNDABOUT	NCC - CFZ WAYFINDER	1	REPLACE	
	CRK - MANILA WAYFINDER	1	REPLACE			MANILA - NCC WAYFINDER	1	REPLACE	
	CFZ - CRK WAYFINDER	1	REPLACE			ML QUEZON AVENUE - HENRY AQUINO AVENUE	1	REPLACE	

**REPAIR, REMOVAL AND REPLACEMENT OF ROAD TRAFFIC SIGNAGES AND MARKERS**

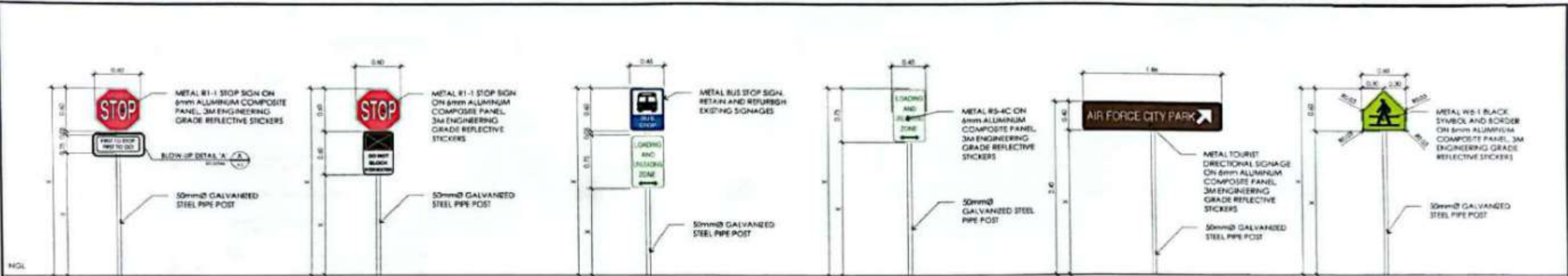
- SCOPE OF WORKS:  
THE CONTRACTOR SHALL FULLY COORDINATE AND CONDUCT THE FOLLOWING:
- CONTRACTOR TO FURNISH ALL SHOP DRAWINGS OF ALL EXISTING MARKERS AND SIGNAGES FOR REPAIR, REMOVAL AND/OR REPLACEMENT ACCORDING TO ACTUAL SITE CONDITIONS FOR THE APPROVAL OF THE END USER.
  - CONTRACTOR TO VERIFY LOCATIONS OF MARKERS AND SIGNAGES INDICATED ON PLAN ACCORDING TO ACTUAL SITE CONDITIONS FOR THE APPROVAL OF THE END USER.
  - CONTRACTOR TO CONDUCT NECESSARY GROUND MAINTENANCE AND RESTORATION WORKS FOR ANY DISRUPTION AND DESTRUCTION ON AFFECTED SITE DEVELOPMENTS WITHIN CLARK AIRPORT CITY.
  - ALL WORKS ARE FOR THE APPROVAL OF THE END USER PRIOR IMPLEMENTATION OF WORKS.



**C.M. RECTO HIGHWAY SITE PLAN**

- LEGENDS & SYMBOLS:**
- STOP & FIRST STOP FIRST GO SIGNAGE
  - AIR FORCE BILLBOARD
  - YOU ARE ENTERING CLARK AIR BASE SIGN
  - OBSERVE TRAFFIC RULES SIGN
  - AIR FORCE CITY PARK ENTRANCE
  - AIRCRAFT PARK ENTRANCE
  - AIR DEFENSE WAY FINDER
  - WELCOME TO CLARK AIR BASE SIGN
  - STOP & DO NOT BLOCK INTERSECTION SIGNAGE
  - THIS WAY TO HARBOR SIGNAGE
  - THIS WAY TO 2ND ARCEEN SIGN
  - LOW HOUSE SIGNAGE
  - 7-ELEVEN SIGNAGE
  - BCDA PMD SIGNAGE
  - LOCATOR SIGNAGES

	PREPARED BY: AR. JOAN M. VILLAP, BANTUG AR. JANILLO V. EMANAG	CHECKED AND REVIEWED BY: AR. JESSE O. JONICA JR. AR. JESSE O. JONICA JR.	PROJECT: IMPROVEMENT OF SITE DEVELOPMENT WITHIN CLARK AVIATION CAPITAL CLARK CIVIL AVIATION COMPLEX CLARK FREEPORT ZONE, MABALACAT, PAMPANGA	APPROVED BY: ENGR. WILFIDO C. AGUIRERA VICE PRESIDENT FOR SITE DEVELOPMENT AND OPERATIONS SLAVE INTERNATIONAL AIRPORT CORPORATION	SHEET CONTENTS: GENERAL NOTES SITE PLAN SCHEDULE OF EXISTING SIGNAGES	REVISIONS: NO.   DESCRIPTION   DATE   BY   CHECKED BY   DATE   SHEET NO.	DRAWN BY: JMB, BJA CHECKED BY: JMB, BJA DATE: JUN 24 SHEET NO.: A-5/17 FILE NO.:
	GENERAL NOTES: FOR CONSTRUCTION CONST. BULLETIN FOR BIDDING FOR APPROVAL OTHER:						



**ELEVATION**  
STOP AND FIRST TO STOP FIRST TO GO SIGNAGE

QUANTITY: SEVEN (7) SETS  
 LOCATION: C.M. RECTO HIGHWAY CORNER: J.CALVO STREET, M.L. QUEZON STREET, GAGASAN STREET, UNNAMED STREET, B. FERNANDO STREET, BLUE DIAMONDS STREET  
 REMARKS: EXISTING PANELS & POLES TO BE REUSED: 65 UNITS  
 FOR REPRINTING OF STICKERS: 210 UNITS  
 NEW PANELS AND STICKERS: 210 UNITS

**ELEVATION**  
STOP AND DO NOT BLOCK INTERSECTION SIGNAGE

QUANTITY: FIVE (5) SETS  
 LOCATION: C.M. RECTO HIGHWAY CORNER: M.L. QUEZON AVENUE, OL. PUTAT AVENUE, J.CALVO STREET  
 REMARKS: EXISTING PANELS & POLES TO BE REUSED: 65 UNITS  
 FOR REPRINTING OF STICKERS: 25 UNITS  
 NEW PANELS AND STICKERS: 25 UNITS

**ELEVATION**  
BUS STOP AND LOADING - UNLOADING ZONE

QUANTITY: SEVEN (7) UNITS  
 LOCATION: C.M. RECTO HIGHWAY CORNER: J.CALVO STREET, M.L. QUEZON AVENUE, NINYO AQUINO AVENUE, ANDRES SORIANO SR. STREET, UNNAMED ROAD, GAGASAN STREET, B.FERNANDO STREET, BLUE DIAMONDS STREET  
 REMARKS: EXISTING PANELS & POLES TO BE REUSED: 65 UNITS  
 FOR REPRINTING OF STICKERS: 210 UNITS  
 NEW PANELS AND STICKERS: N/A  
 TO COMBINE THE 2 SEPARATE SIGNAGES IN ONE POLE

**ELEVATION**  
LOADING AND UNLOADING ZONE SIGNAGE

QUANTITY: SEVEN (7) UNITS  
 LOCATION: C.M. RECTO HIGHWAY CORNER: J.CALVO STREET, M.L. QUEZON AVENUE, NINYO AQUINO AVENUE, ANDRES SORIANO SR. STREET, UNNAMED ROAD, GAGASAN STREET, B.FERNANDO STREET, BLUE DIAMONDS STREET  
 REMARKS: EXISTING PANELS & POLES TO BE REUSED: 210 UNITS  
 FOR REPRINTING OF STICKERS: 210 UNITS  
 NEW PANELS AND STICKERS: N/A

**ELEVATION**  
AIR FORCE CITY TOURIST DIRECTIONAL SIGNAGE

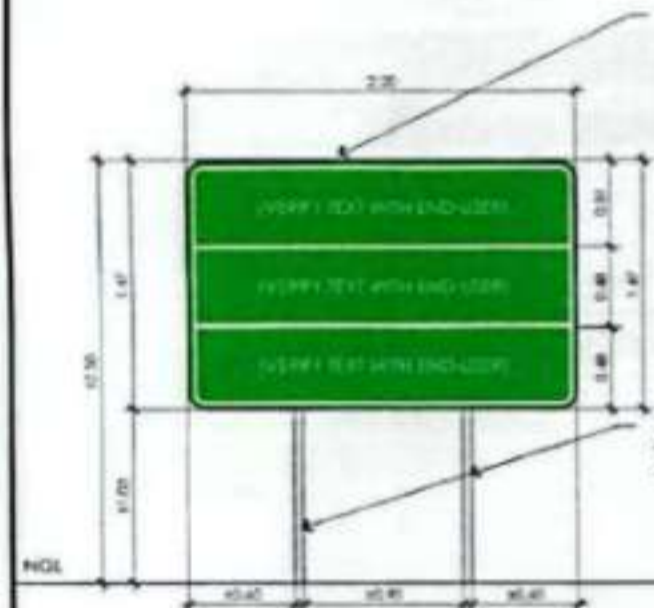
QUANTITY: 2 ONE (1) UNIT  
 LOCATION: C.M. RECTO HIGHWAY  
 REMARKS: REPAIR ALIGNMENT

**ELEVATION**  
APPROACHING PEDESTRIAN SIGNAGE

QUANTITY: SEVEN (7) UNITS  
 LOCATION: C.M. RECTO HIGHWAY CORNER: J.CALVO STREET, M.L. QUEZON AVENUE, NINYO AQUINO AVENUE, ANDRES SORIANO SR. STREET, M.A. ROSAS, 1ST AREA, GAGASAN STREET & FERNANDO STREET  
 REMARKS: REPLACE OLD SIGNAGE EXISTING PANELS & POLES TO BE REUSED: 110 UNITS  
 FOR REPRINTING OF STICKERS: 25 UNITS  
 NEW PANELS AND STICKERS: 22 UNITS

**GENERAL NOTES**

1. THE GRAPHICS AND DESIGNS OF ROAD TRAFFIC SIGNAGES AND MARKERS, LATERAL PLACEMENT AND HEIGHT MUST ADHERE TO THE DEPARTMENT OF PUBLIC WORKS AND HIGHWAYS (DPWH) 2012 HIGHWAY SAFETY DESIGN STANDARDS MANUAL, SPECIFICALLY THE ROAD SIGNAGES AND PAVEMENT MARKINGS.
2. AS PER THE DPWH ROAD SIGN AND PAVEMENT MARKINGS, THERE SHOULD NOT BE MORE THAN ONE SIGN OF PARTICULAR TYPE ON EACH POST, EXCEPT WHERE ONE SIGN SUPPLEMENTS ANOTHER OR WHERE ROUTE OR DIRECTIONAL SIGNS MUST BE GROUPED.
3. ALL GALVANIZED STEEL PIPE POSTS FOR ALL NEW SIGNAGES SHALL BE INSTALLED WITH AT LEAST 24" CONCRETE PEDESTAL (CONTRACTOR TO PROVIDE SHOP DRAWINGS).
4. FOR WAYFINDING MARKERS AND NON-SAFETY RELATED SIGNAGE ELEMENTS, REFER TO THE DESIGN STANDARDS AND GUIDELINES AND BRANDING ESTABLISHED BY THE ELEMENT.
5. ALL DRAWINGS AND REVISIONS ARE SUBJECT TO THE DECLARANT AND ARCHITECT'S APPROVAL PRIOR IMPLEMENTATION OF WORKS.
6. TO ENSURE STRUCTURAL STABILITY ON ALL ADDITIONAL SIGNAGES TO BE INSTALLED, CONTRACT TO ASSURE AND INCLUDE IN THE FINAL SHOP DRAWINGS THE CONCRETE PEDESTAL NECESSARY FOR THE SAID SIGNAGES.
7. CONTRACTOR TO CONDUCT SITE SURVEY AND VERIFY ACTUAL CONDITIONS PRIOR TO COMMENCEMENT WITH DESIGN AND IMPLEMENTATION OF WORKS.



**ELEVATION**  
DIAGRAMMATIC DIRECTION SIGNAGE

QUANTITY: FIFTEEN (15) UNITS  
 LOCATION: A. BONFACIO AVENUE, C.M. RECTO HIGHWAY, NINYO AQUINO AVENUE, M.L. QUEZON, IN FRONT OF 1ST, IN FRONT OF TERMINAL 1 ENTRANCE, B. FERNANDO STREET, OL. PUTAT AVENUE  
 REMARKS: EXISTING PANELS & POLES TO BE REUSED: 230 UNITS  
 FOR REPRINTING OF STICKERS: 215 UNITS  
 NEW PANELS AND STICKERS: N/A  
 VERIFY TEXTS AND DESIGN WITH END USER'S BRANDING

**ELEVATION**  
BIKE LANE AHEAD SIGNAGE

QUANTITY: 2 ONE (1) UNITS  
 LOCATION: C.M. RECTO HIGHWAY  
 REMARKS: EXISTING PANELS & POLES TO BE REUSED: N/A  
 FOR REPRINTING OF STICKERS: N/A  
 NEW PANELS AND STICKERS: 21 UNITS

**ELEVATION**  
BUS STOP NO PARKING SIGNAGE - PEDESTRIAN SIGNAGE

QUANTITY: FIFTEEN (15) UNITS  
 LOCATION: C.M. RECTO HIGHWAY CORNER: J.CALVO STREET, M.L. QUEZON AVENUE, NINYO AQUINO AVENUE, ANDRES SORIANO SR. STREET, UNNAMED ROAD, GAGASAN STREET, B.FERNANDO STREET, BLUE DIAMONDS STREET  
 REMARKS: EXISTING PANELS & POLES TO BE REUSED: N/A  
 FOR REPRINTING OF STICKERS: N/A  
 NEW PANELS AND STICKERS: 215 UNITS



**A** BLOW-UP DETAIL 'A'  
A-6 SCALE NTS

**B** SCHEDULE OF ROAD TRAFFIC SIGNAGES  
A-5 SCALE 1:30M

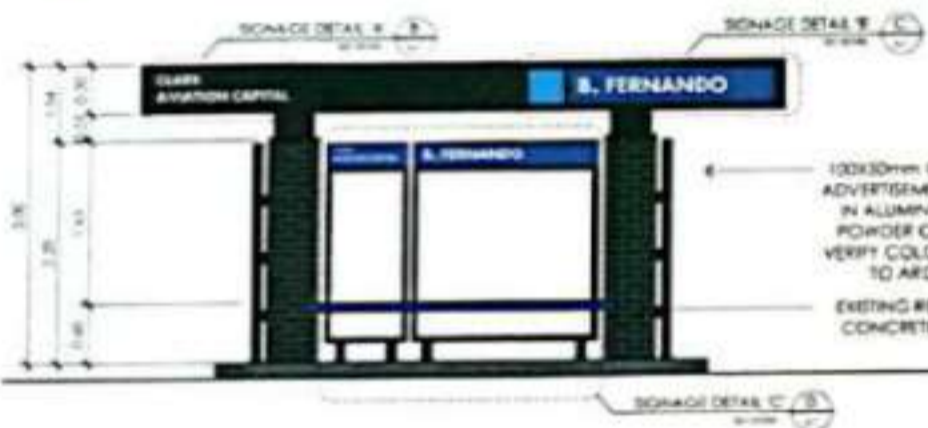
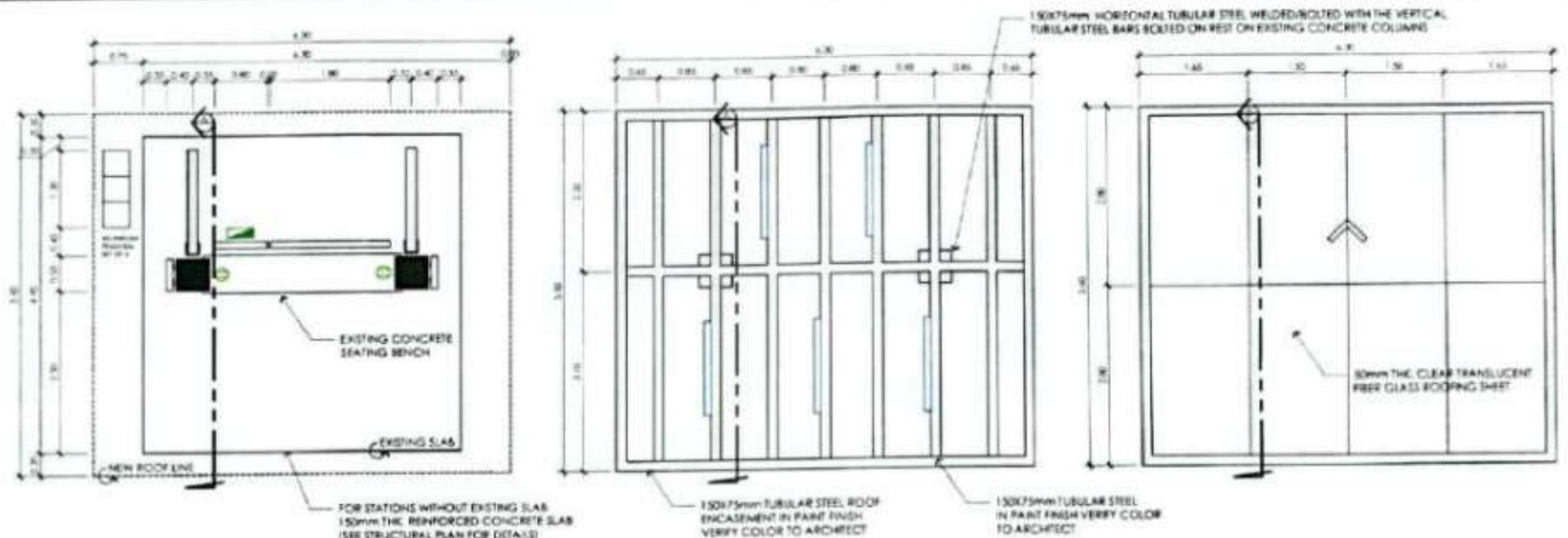
	PREPARED BY:  AR. JOAN MYRTLE P. BANTUG	CHECKED AND REVIEWED BY:  AR. RAMON V. UYANAG	APPROVED BY:  AR. NESTOR G. GARCIA JR.	PROJECT: IMPROVEMENT OF SITE DEVELOPMENT WITHIN CLARK AVIATION CAPITAL CLARK CIVIL AVIATION COMPLEX CLARK FREEPORT ZONE, MABALACAT, PAMPANGA	APPROVED BY:  ENGR. BRANDO C. AGUILERA VICE PRESIDENT FOR BUSINESS DEVELOPMENT AND OPERATIONS CLARK INTERNATIONAL AIRPORT CORPORATION	SHEET CONTENTS: GENERAL NOTES SCHEDULE OF ROAD TRAFFIC SIGNAGES BLOW-UP DETAIL 'A'	REVISIONS: 1. REVISION TO CLARIFY AND CORRECT	DATE: 11/20/2024	BY: ENGR. BRANDO C. AGUILERA	CHECKED BY: AR. JOAN MYRTLE P. BANTUG	DATE: 11/20/2024	SHEET NO. A-6 / 17
	PREPARED BY:  AR. RAMON V. UYANAG	CHECKED AND REVIEWED BY:  AR. NESTOR G. GARCIA JR.	APPROVED BY:  ENGR. BRANDO C. AGUILERA	PROJECT: IMPROVEMENT OF SITE DEVELOPMENT WITHIN CLARK AVIATION CAPITAL CLARK CIVIL AVIATION COMPLEX CLARK FREEPORT ZONE, MABALACAT, PAMPANGA	APPROVED BY:  ENGR. BRANDO C. AGUILERA	SHEET CONTENTS: GENERAL NOTES SCHEDULE OF ROAD TRAFFIC SIGNAGES BLOW-UP DETAIL 'A'	REVISIONS: 1. REVISION TO CLARIFY AND CORRECT	DATE: 11/20/2024	BY: ENGR. BRANDO C. AGUILERA	CHECKED BY: AR. JOAN MYRTLE P. BANTUG	DATE: 11/20/2024	SHEET NO. A-6 / 17

# REDEVELOPMENT OF EXISTING PUV WAITING STATIONS

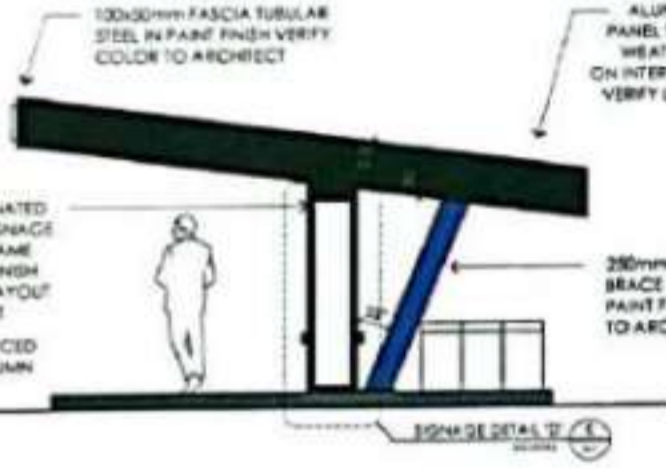
SCOPE OF WORKS  
THE CONTRACTOR SHALL FULLY CONSTRUCT AND INSTALL THE FOLLOWING WORKS:

- RENOVATION OF EXISTING PUV STATIONS ON IDENTIFIED LOCATIONS ALONG MAJOR AND MINOR THOROUGHFARES, HIGHWAYS AND STREETS
- REMOVAL OF EXISTING ROOF COMPONENTS AND OTHER ARCHITECTURAL AND CIVIL COMPONENTS TO BE REPLACED WITH PRESCRIBED PLAN AND DETAILS IN ORDER FOR THE PUV STATIONS TO BE IN UNIFORMITY WITH REGARDS TO DESIGN
- CONTRACTOR TO FURNISH SHOP DRAWINGS OF ALL NECESSARY COMPONENTS OF THE PUV WAITING STATION ACCORDING TO ACTUAL SITE CONDITIONS FOR THE APPROVAL OF THE END USER.
- GROUND CIVIL WORKS
  - CONDUCT NECESSARY EXCAVATION, BACK-FILLING AND OTHER CIVIL WORKS NECESSARY FOR THE REDEVELOPMENT OF THE PUV WAITING STATION
- ELECTRICAL WORKS CONCERNING THE REDEVELOPMENT OF THE PUV STATION AND AUXILIARY LIGHTING FIXTURES WHICH INCLUDES BUT NOT LIMITED TO:
  - ELECTRICAL LIGHTING CABLE LAYING
  - ELECTRICAL POWER CABLE LAYING (IF NECESSARY)
  - ELECTRICAL TAPPING TO NEAREST POWER SOURCE FOR THE ADVERTISEMENT SIGNAGES, LIGHTING FIXTURES AND ALL OTHER NECESSARY ELECTRICAL WORKS TO MAKE THE PUV WAITING STATION OPERATIONAL
- ALL SIGNAGES, MATERIALS, WIRINGS, ETC. THAT ARE RECOVERED OR TO BE REMOVED MUST BE PROPERLY DOCUMENTED AND TURNED OVER TO THE END USER.
- CONTRACTOR TO CONDUCT NECESSARY GROUND MAINTENANCE AND RESTORATION WORKS FOR ANY DISRUPTION AND DESTRUCTION ON AFFECTED SITE DEVELOPMENTS WITHIN CLARK AIRPORT CITY.
- ALL WORKS AND DESIGNS MUST ADHERE TO THE END USER'S BRANDING DESIGN SUBJECT TO THE APPROVAL OF THE END USER PRIOR IMPLEMENTATION OF WORKS.

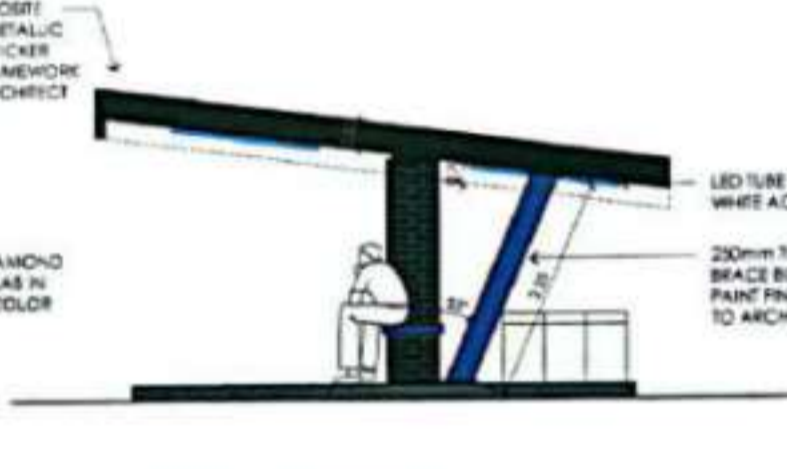
SYMBOLS & FINISHES	
	TUBING LIGHT COLOR WHITE
	ADVERTISEMENT OUTPUT
	PANEL BOARD



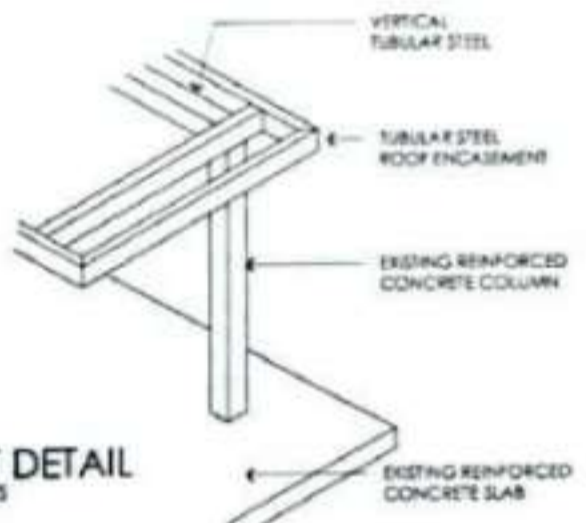
**FRONT ELEVATION**  
SCALE: 1:50M



**SIDE ELEVATION**  
SCALE: 1:50M



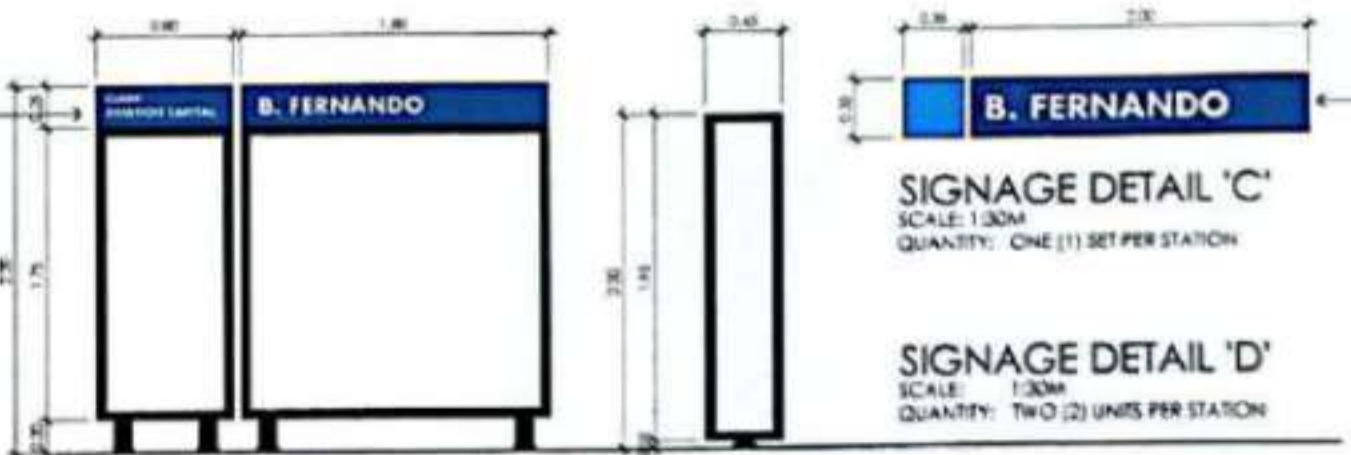
**SECTION THRU "A"**  
SCALE: 1:50M



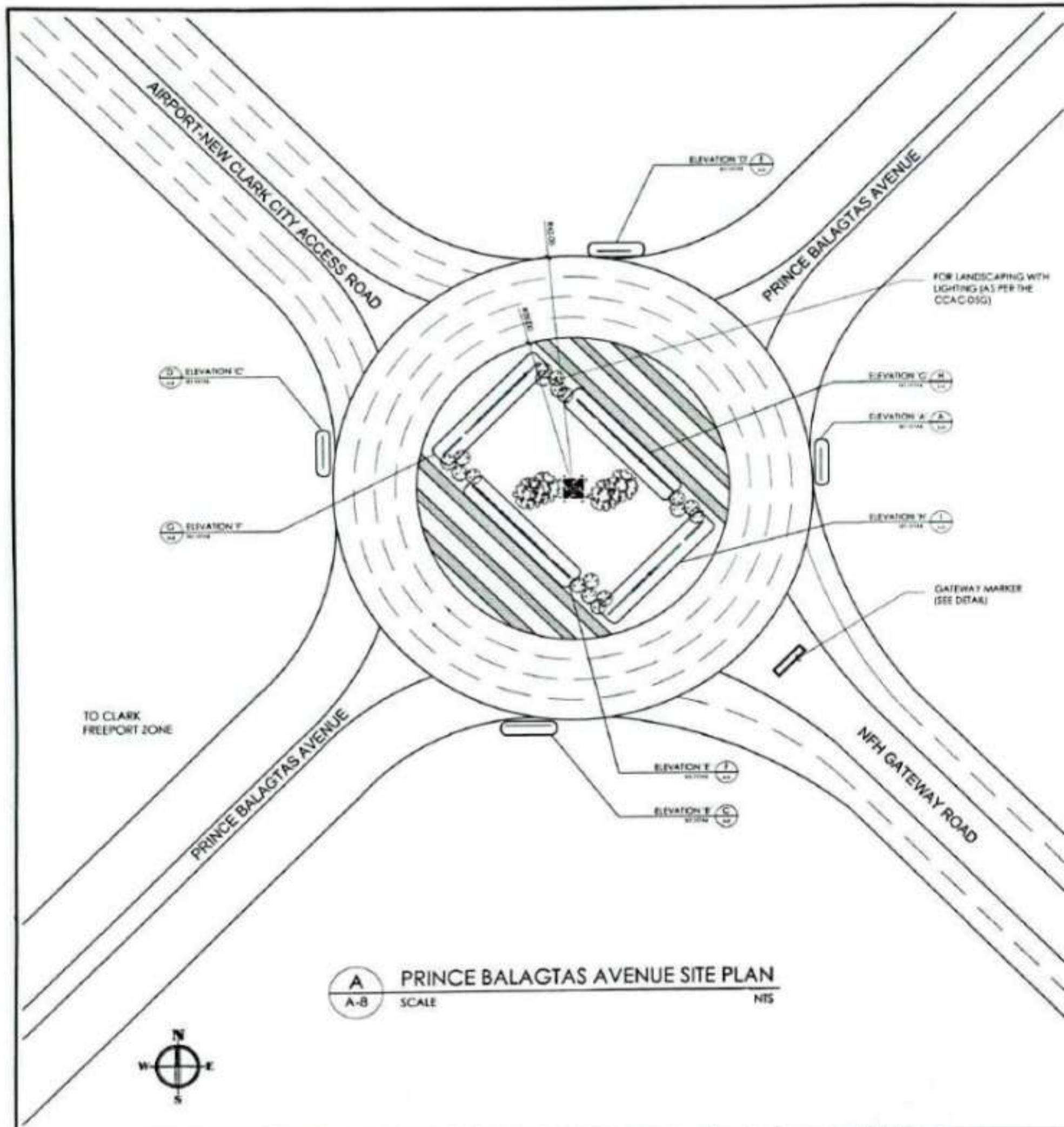
**SPOT DETAIL**  
SCALE: NTS

**A TYPICAL PUV WAITING STATION**  
SCALE: 1:50M

LOCATION	QUANTITY	REMARKS
A. BONIFACIO AVENUE	TWO (2)	WITH SLAB
J. CALVO STREET	ONE (1)	WITH SLAB
M.L. QUEZON AVENUE	THREE (3)	WITH SLAB
B. FERNANDO / BLUE DIAMOND	TWO (2)	WITHOUT SLAB
C.M. RECTO HIGHWAY	ONE (1)	WITHOUT SLAB



	PREPARED BY:  AR. RONEL V. IWANING CLARK AIRPORT CITY DEVELOPMENT AND OPEN SPACE TEAM LEADER	DESIGNED AND DRAWN BY:  AR. TINO C. AGUILERA JR. CLARK AIRPORT CITY DEVELOPMENT AND OPEN SPACE TEAM LEADER	PROJECT: IMPROVEMENT OF SITE DEVELOPMENT WITHIN CLARK AVIATION CAPITAL CLARK CIVIL AVIATION COMPLEX CLARK AIRPORT (ICM, MABALACAL, PAMPANGA)	APPROVED BY:  ENGR. RONEL V. IWANING CLARK AIRPORT CITY DEVELOPMENT AND OPEN SPACE TEAM LEADER	SHEET CONTENTS: GENERAL NOTES TYPICAL PUV WAITING STATION PLAN, ROOF PLAN, FRONT & SIDE ELEV. SECTION THRU "A" SPOT AND SIGNAGE DETAIL A-D	REVISIONS: NO.   DESCRIPTION   DATE   BY   CHECKED BY	CHECKED BY: DATE: SHEET NO.: A-7 / 17 PROJ. NO.:
	CONTRACTOR USE TO SUBMIT SHOP DRAWINGS TO ARCHITECTS UNDER THE SUPERVISION OF CIAC. ALL SUBMITTALS ARE TO BE APPROVED ON SITE BY THE CONTRACTOR. ALL SUBMITTALS ARE TO BE IMMEDIATELY RETURNED TO THE ARCHITECT'S PROJECT/OPERATIONS DIVISION. THE CONTRACTOR SHALL BE RESPONSIBLE FOR THE PROTECTION OF ALL UTILITIES AND SERVICES TO BE MAINTAINED AND NOT TO BE DISRUPTED BY THEIR OWN WORK.		SHEET NO.   TOTAL SHEETS		OTHER:		



**A** PRINCE BALAGTAS AVENUE SITE PLAN  
A-B SCALE NTS

**REPAIR, REMOVAL AND REPLACEMENT OF ROUNDABOUT WAYFINDING MONUMENTS**

SCOPE OF WORKS  
THE CONTRACTOR SHALL FULLY COORDINATE AND CONDUCT THE FOLLOWING:

- FABRICATION AND INSTALLATION OF ALL ILLUMINATED BUILD UP LETTERS AND SIGNAGES ON THE IDENTIFIED ROUNDABOUTS.
- CONTRACTOR TO FURNISH SHOP DRAWINGS AND DETAIL DRAWINGS OF ALL WAYFINDING MONUMENTS FOR REPAIR, REMOVAL AND/OR REPLACEMENT ACCORDING TO ACTUAL SITE CONDITIONS FOR THE APPROVAL OF THE END USER.
- GROUND CIVIL WORKS  
3.1 CONDUCT NECESSARY EXCAVATION, BACK-FILLING AND OTHER CIVIL WORKS NECESSARY FOR THE INSTALLATION OF THE WAYFINDERS AND MONUMENTS.
- ELECTRICAL WORKS CONCERNING THE INSTALLATION OF ALL WAYFINDERS AND AUXILIARY LIGHTING FIXTURES WHICH INCLUDES BUT NOT LIMITED TO:  
4.1 ELECTRICAL LIGHTING CABLE LAYING  
4.2 ELECTRICAL POWER CABLE LAYING (IF NECESSARY)  
4.3 ELECTRICAL TAPPING TO NEAREST POWER SOURCE FOR THE WAYFINDERS AND ALL OTHER NECESSARY ELECTRICAL WORKS TO MAKE THE WAYFINDERS, LIGHTING FIXTURES AND MONUMENT OPERATIONAL.
- LANDSCAPING  
5.1 LOW LEVEL LANDSCAPING SHALL BE OF LOW MAINTENANCE AND OF NATIVE SPECIES OF PLANTS.  
5.2 NOXIOUS, OVERLY COMPETITIVE OR INVASIVE PLANT SPECIES ARE PROHIBITED, IF EXISTING THEY MUST BE REMOVED.
- CONTRACTOR TO VERIFY LOCATIONS OF MONUMENTS INDICATED ON PLAN ACCORDING TO ACTUAL SITE CONDITIONS FOR THE APPROVAL OF THE END USER.
- ALL SIGNAGES, MATERIALS, WIRINGS, ETC. THAT ARE RECOVERED OR TO BE REMOVED MUST BE PROPERLY DOCUMENTED AND TURNED OVER TO THE END USER.
- CONTRACTOR TO CONDUCT NECESSARY GROUND MAINTENANCE AND RESTORATION WORKS FOR ANY DISRUPTION AND DESTRUCTION ON AFFECTED SITE DEVELOPMENTS WITHIN CLARK AIRPORT CITY.
- ALL WORKS AND DESIGNS MUST ADHERE TO THE END USER'S BRANDING DESIGN SUBJECT TO THE APPROVAL OF THE END USER PRIOR IMPLEMENTATION OF WORKS.

**TABLE OF EXISTING WAYFINDERS AND DIMENSIONS**

OUTER ROUNDABOUT WAYFINDER DIMENSION MATRIX			
ITEM	EXISTING HEIGHT	PROPOSED HEIGHT	REMARKS
MAIN TEXT	50 cm	80 cm	AS-B
SECONDARY TEXT	25 cm	25 cm	AS-B
ARROW	80 cm	80 cm	AS-B
CONCRETE PEDISTAL	83 cm	83 cm	AS-B

INNER ROUNDABOUT WAYFINDER DIMENSION MATRIX			
ITEM	EXISTING HEIGHT	PROPOSED HEIGHT	REMARKS
TEXT	105 cm	105 cm	AS-B
ARROW	285 cm	140 cm	CHANGE

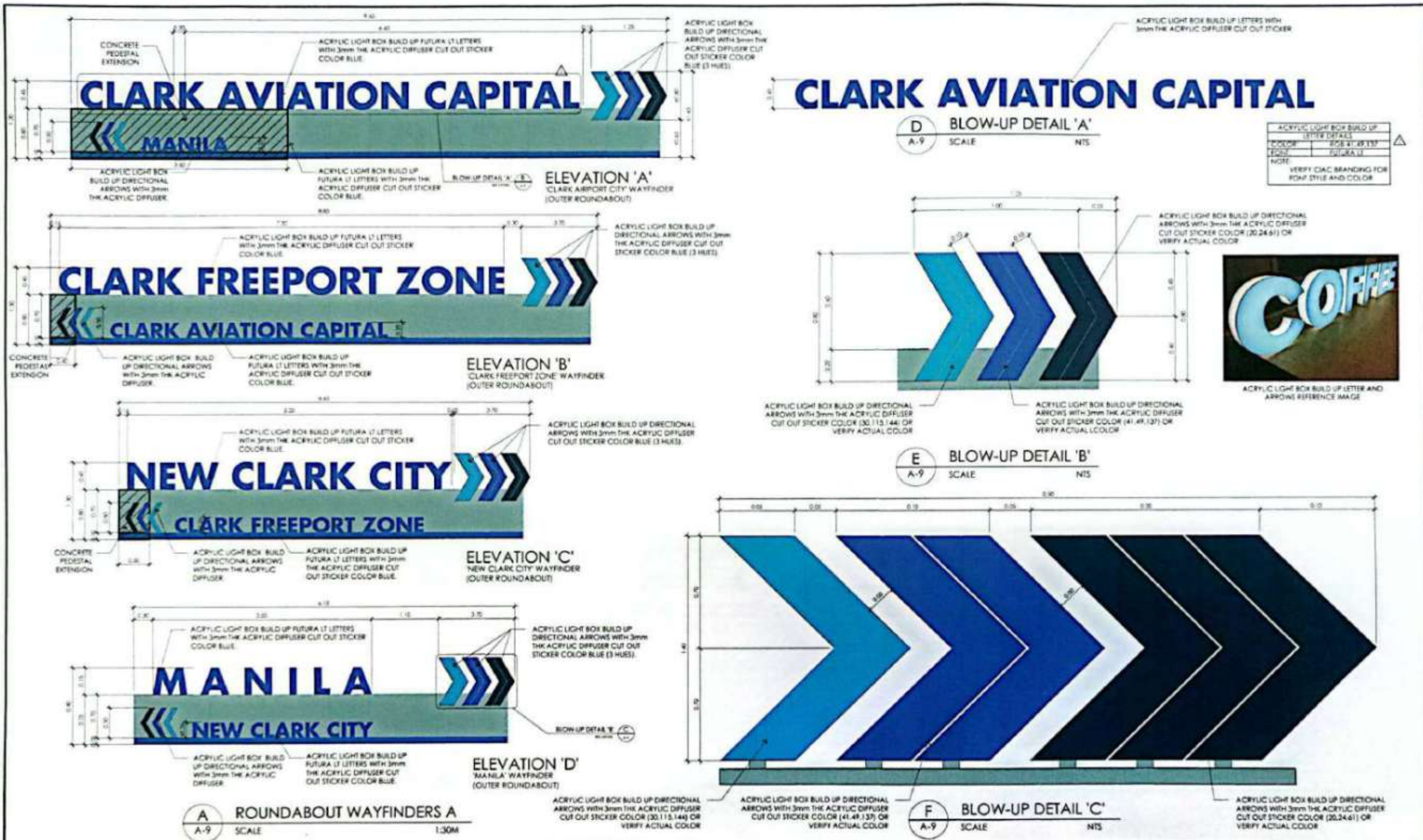
**TABLE OF LANDSCAPING SPECIES**

OUTER ROUNDABOUT WAYFINDER DIMENSION MATRIX			
LOCATION	SPECIES	AREA (SQM)	REMARKS
PRINCE BALAGTAS AVENUE ROUNDABOUT	YUCCA	114.00 sqm	SHOULD INCLUDE GARDEN SOIL NEEDED FOR INSTALLATION
	SHAMOMONG SUNGIONG	48.00 sqm	
	CRAPE JASMINE	54.00 sqm	
	FROG GRASS	1,830.00 sqm	
GL PUYAT AVENUE ROUNDABOUT	YUCCA	437.00 sqm	SHOULD INCLUDE GARDEN SOIL NEEDED FOR INSTALLATION
	GUMAMELA	275.00 sqm	
	CRAPE JASMINE	500.00 sqm	
	FROG GRASS	588.00 sqm	

1. ALL WORK SHALL BE TO THE BEST QUALITY. (MAY 2024)

	PREPARED BY: AR. JOAN MARVILLE P. BANTIUG AR. FANIELO V. LIWANAG	CHECKED AND REVIEWED BY: [Signature] [Signature]	PROJECT: IMPROVEMENT OF SITE DEVELOPMENT WITHIN CLARK AVIATION CAPITAL CLARK CIVIL AVIATION COMPLEX CLARK FREEPORT ZONE, MABALACAT, PAMPANGA	APPROVED BY: ENGR. BRANDEE AGULERA (FOR PERMIT)	SHEET CONTENTS: GENERAL NOTES PRINCE BALAGTAS SITE PLAN AS FOUND WAYFINDERS A	REVISIONS: NO.   DATE   DESCRIPTION   BY   CHECKED BY   DATE	NO. PLANS: NO. BULLETIN: ADDRESS: FOR PERMIT: FOR CONSTRUCTION: FOR QUOTATION: FOR APPROVAL: OTHER:	DRAWN BY: [Signature] CHECKED BY: [Signature] DATE: JAN 24 SHEET NO.: <b>A-8 / 17</b> PROJ. NO.
	PREPARED BY: AR. JOAN MARVILLE P. BANTIUG AR. FANIELO V. LIWANAG	CHECKED AND REVIEWED BY: [Signature] [Signature]	PROJECT: IMPROVEMENT OF SITE DEVELOPMENT WITHIN CLARK AVIATION CAPITAL CLARK CIVIL AVIATION COMPLEX CLARK FREEPORT ZONE, MABALACAT, PAMPANGA	APPROVED BY: ENGR. BRANDEE AGULERA (FOR PERMIT)	SHEET CONTENTS: GENERAL NOTES PRINCE BALAGTAS SITE PLAN AS FOUND WAYFINDERS A	REVISIONS: NO.   DATE   DESCRIPTION   BY   CHECKED BY   DATE	NO. PLANS: NO. BULLETIN: ADDRESS: FOR PERMIT: FOR CONSTRUCTION: FOR QUOTATION: FOR APPROVAL: OTHER:	DRAWN BY: [Signature] CHECKED BY: [Signature] DATE: JAN 24 SHEET NO.: <b>A-8 / 17</b> PROJ. NO.





	PREPARED BY: AR. JOAN ANSELMO P. BANTUG 	CHECKED AND REVISIONS BY: AR. JANELO V. JUANING 	APPROVED BY: AR. ALBERTO O. GARCIA JR. 	PROJECT: IMPROVEMENT OF SITE DEVELOPMENT WITHIN CLARK AVIATION CAPITAL CLARK CIVIL AVIATION COMPLEX CLARK FREEPORT ZONE, MABALACAT, PAMPANGA	APPROVED BY: ENGR. BRANCO C. AGUILERA 	SHEET CONTENTS: ROUND ABOUT WAYFINDERS A BLOW-UP DETAIL 'A' BLOW-UP DETAIL 'B' BLOW-UP DETAIL 'C'	REVISIONS: NO.   DATE   DESCRIPTION 1	DATE:   NO. PLANT:   NO. BULLETIN:   ADDENDUM:   FOR PERMIT:   FOR CONSTRUCTION:   COMET BULLETIN:   FOR QUOTATION:   FOR APPROVAL:   OTHERS:	DRAWN BY:   CHECKED BY:   DATE:   SHEET NO:   A-9/17 PROJ. NO:
	PREPARED BY: AR. JOAN ANSELMO P. BANTUG 	CHECKED AND REVISIONS BY: AR. JANELO V. JUANING 	APPROVED BY: AR. ALBERTO O. GARCIA JR. 	PROJECT: IMPROVEMENT OF SITE DEVELOPMENT WITHIN CLARK AVIATION CAPITAL CLARK CIVIL AVIATION COMPLEX CLARK FREEPORT ZONE, MABALACAT, PAMPANGA	APPROVED BY: ENGR. BRANCO C. AGUILERA 	SHEET CONTENTS: ROUND ABOUT WAYFINDERS A BLOW-UP DETAIL 'A' BLOW-UP DETAIL 'B' BLOW-UP DETAIL 'C'	REVISIONS: NO.   DATE   DESCRIPTION 1	DATE:   NO. PLANT:   NO. BULLETIN:   ADDENDUM:   FOR PERMIT:   FOR CONSTRUCTION:   COMET BULLETIN:   FOR QUOTATION:   FOR APPROVAL:   OTHERS:	DRAWN BY:   CHECKED BY:   DATE:   SHEET NO:   A-9/17 PROJ. NO:

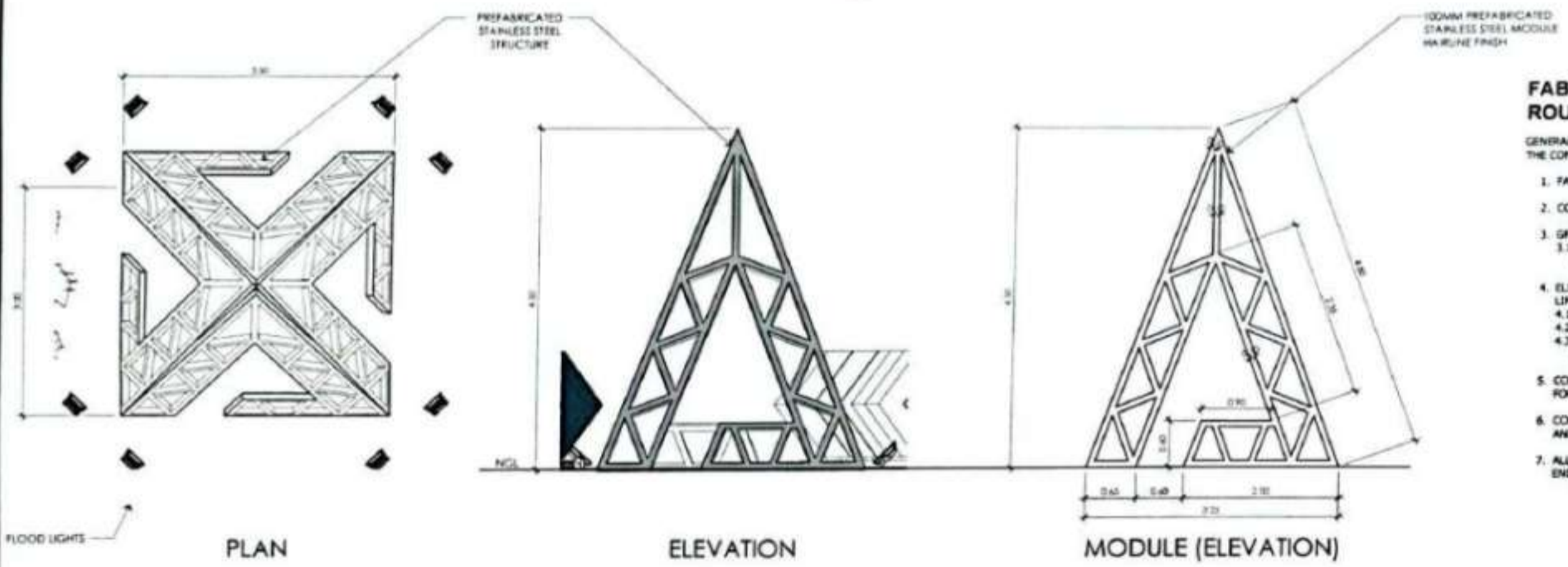


**A** ROUNDABOUT WAYFINDERS B  
A-10 SCALE 1:300A

	PREPARED BY: AR. JOAN MARITTE P. BANTUG AR. RANLO V. IWANAG	CHECKED AND REVIEWED BY: AR. FRANCISCO G. DE VERA JR. AR. JOAN MARITTE P. BANTUG	PROJECT: IMPROVEMENT OF SITE DEVELOPMENT WITHIN CLARK AVIATION CAPITAL CLARK CIVIL AVIATION COMPLEX CLARK FREEPORT ZONE, MABALACAT, PAMPANGA	APPROVED BY: ENGR. ERNESTO C. AGUILERA VICE PRESIDENT FOR BUSINESS DEVELOPMENT AND OPERATIONS CLARK INTERNATIONAL AIRPORT CORPORATION	SHEET CONTENTS: ROUNDABOUT WAYFINDERS B	REVISIONS: NO.   DATE   DESCRIPTION 1   10/17/2017	NO.   DATE   DESCRIPTION 1   10/17/2017	DRAWN BY: JAB/NOV CHECKED BY: JAB/NOV DATE: JUN '17 SHEET NO.: A-10/17 PROJ. NO.:
	PREPARED BY: AR. JOAN MARITTE P. BANTUG AR. RANLO V. IWANAG	CHECKED AND REVIEWED BY: AR. FRANCISCO G. DE VERA JR. AR. JOAN MARITTE P. BANTUG	PROJECT: IMPROVEMENT OF SITE DEVELOPMENT WITHIN CLARK AVIATION CAPITAL CLARK CIVIL AVIATION COMPLEX CLARK FREEPORT ZONE, MABALACAT, PAMPANGA	APPROVED BY: ENGR. ERNESTO C. AGUILERA VICE PRESIDENT FOR BUSINESS DEVELOPMENT AND OPERATIONS CLARK INTERNATIONAL AIRPORT CORPORATION	SHEET CONTENTS: ROUNDABOUT WAYFINDERS B	REVISIONS: NO.   DATE   DESCRIPTION 1   10/17/2017	NO.   DATE   DESCRIPTION 1   10/17/2017	DRAWN BY: JAB/NOV CHECKED BY: JAB/NOV DATE: JUN '17 SHEET NO.: A-10/17 PROJ. NO.:



**A** ROUNDABOUT SITE ELEVATION  
A-11 SCALE NTS

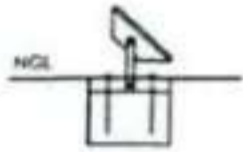


**FABRICATION AND INSTALLATION OF PRINCE BALAGTAS ROUNDABOUT MARKER**

- GENERAL NOTES:  
THE CONTRACTOR SHALL FULLY COORDINATE AND CONDUCT THE FOLLOWING:
1. FABRICATION AND INSTALLATION OF THE STAINLESS STEEL MARKER.
  2. CONTRACTOR TO FURNISH SHOP DRAWINGS AND DETAIL DRAWINGS SUBJECT TO THE APPROVAL OF THE END USER.
  3. GROUND CIVIL WORKS
    - 3.1 CONDUCT NECESSARY EXCAVATION, BACK-FILLING AND OTHER CIVIL WORKS NECESSARY FOR THE INSTALLATION OF THE MARKER.
  4. ELECTRICAL WORKS CONCERNING THE INSTALLATION OF ALL LIGHTING FIXTURES WHICH INCLUDES BUT NOT LIMITED TO:
    - 4.1 ELECTRICAL LIGHTING CABLE LAYING
    - 4.2 ELECTRICAL POWER CABLE LAYING (IF NECESSARY)
    - 4.3 ELECTRICAL TAPPING TO NEAREST POWER SOURCE FOR THE MARKER AND ALL OTHER NECESSARY ELECTRICAL WORKS TO MAKE IT OPERATIONAL.
  5. CONTRACTOR TO VERIFY LOCATIONS OF MONUMENTS INDICATED ON PLAN ACCORDING TO ACTUAL SITE CONDITIONS FOR THE APPROVAL OF THE END USER.
  6. CONTRACTOR TO CONDUCT NECESSARY GROUND MAINTENANCE AND RESTORATION WORKS FOR ANY DISRUPTION AND DESTRUCTION ON AFFECTED SITE DEVELOPMENTS WITHIN CLARK AIRPORT CITY.
  7. ALL WORKS AND DESIGNS MUST ADHERE TO THE END USER'S BRANDING DESIGN SUBJECT TO THE APPROVAL OF THE END USER PRIOR IMPLEMENTATION OF WORKS.

**B** MARKER / PUBLIC ART DETAILS  
A-11 SCALE NTS

**FLOOD LIGHT DETAIL**  
PRINCE BALAGTAS ROUNDABOUT



QUANTITY: EIGHT (8) UNITS  
SPEC: 300W SOLAR LED FLOOD LIGHT IN DAYLIGHT WHITE ACCENT  
REMARKS: BOLT/SCREWED MOUNTED ON CONCRETE PEDESTAL SUBMERGED BELOW GRADE TO ENSURE STABILITY AND SECURITY

	PREPARED BY: AR. JOAN MARVILLE P. SANTUG AR. RANEO V. LWANAG	CHECKED AND REVIEWED BY: AN. LUDERICO G. GARCIA JR. CLARK AIRPORT CITY DEVELOPMENT AND PUBLIC PARKS AND OPEN SPACES DIVISION	PROJECT: IMPROVEMENT OF SRE DEVELOPMENT WITHIN CLARK AVIATION CAPITAL CLARK CIVIL AVIATION COMPLEX CLARK FREEPORT ZONE, MABALACAT, PAMPANGA	APPROVED BY: ENGR. BRANDDIC. AGUILERA VICE PRESIDENT FOR BUSINESS DEVELOPMENT AND OPERATIONS CLARK INTERNATIONAL AIRPORT CORPORATION	SHEET CONTENTS: ROUNDABOUT SITE ELEVATION MARKER / PUBLIC ART DETAILS	REVISIONS: NO.   DESCRIPTION   DATE   BY   CHECKED BY   DATE   SHEET NO.	SHEET NO.: 01 OF 01	SHEET TOTAL: 01 OF 01	DRAWN BY: JANE/2024	CHECKED BY: DATE: APR. 24	SHEET NO.: A-11/17	PROJ. NO.:
	PREPARED BY: AR. JOAN MARVILLE P. SANTUG AR. RANEO V. LWANAG	CHECKED AND REVIEWED BY: AN. LUDERICO G. GARCIA JR. CLARK AIRPORT CITY DEVELOPMENT AND PUBLIC PARKS AND OPEN SPACES DIVISION	PROJECT: IMPROVEMENT OF SRE DEVELOPMENT WITHIN CLARK AVIATION CAPITAL CLARK CIVIL AVIATION COMPLEX CLARK FREEPORT ZONE, MABALACAT, PAMPANGA	APPROVED BY: ENGR. BRANDDIC. AGUILERA VICE PRESIDENT FOR BUSINESS DEVELOPMENT AND OPERATIONS CLARK INTERNATIONAL AIRPORT CORPORATION	SHEET CONTENTS: ROUNDABOUT SITE ELEVATION MARKER / PUBLIC ART DETAILS	REVISIONS: NO.   DESCRIPTION   DATE   BY   CHECKED BY   DATE   SHEET NO.	SHEET NO.: 01 OF 01	SHEET TOTAL: 01 OF 01	DRAWN BY: JANE/2024	CHECKED BY: DATE: APR. 24	SHEET NO.: A-11/17	PROJ. NO.:

### REPAIR, REMOVAL AND REPLACEMENT OF ROUNDABOUT WAYFINDERS, MONUMENTS AND LANDSCAPING

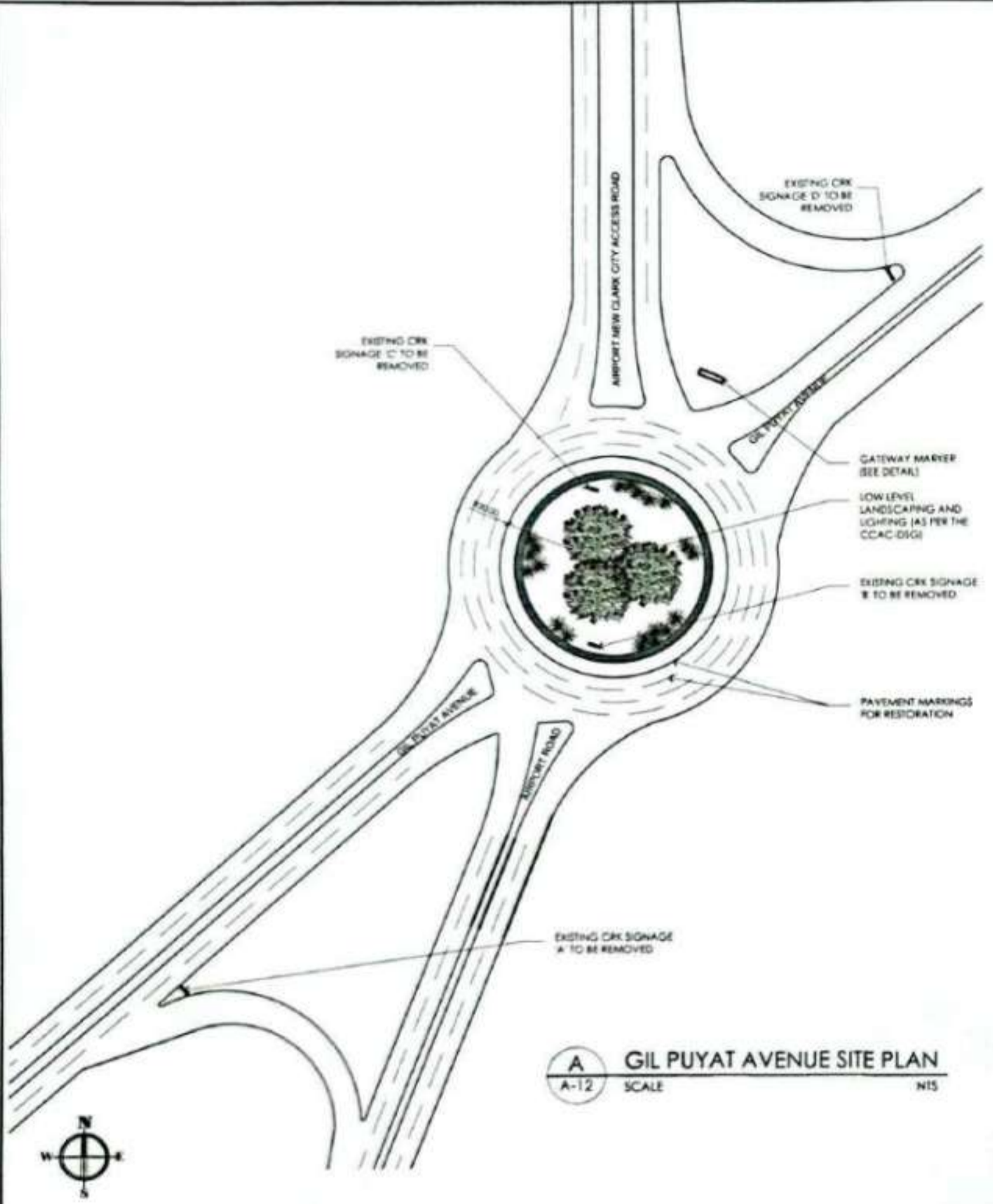
SCOPE OF WORKS  
THE CONTRACTOR SHALL FULLY COORDINATE AND CONDUCT THE FOLLOWING:

1. GROUND CIVIL WORKS
  - 1.1 CONDUCT NECESSARY EXCAVATION, BACK-FILLING AND LAND LEVELING WORKS NECESSARY FOR THE REHABILITATION OF THE ROUNDABOUT.
  - 1.2 RESTORATION OF PAVEMENT MARKINGS
2. ELECTRICAL WORKS CONCERNING THE INSTALLATION OF ALL LIGHTING FIXTURES WHICH INCLUDES BUT NOT LIMITED TO:
  - 2.1 ELECTRICAL LIGHTING CABLE LAYING
  - 2.2 ELECTRICAL POWER CABLE LAYING (IF NECESSARY)
  - 2.3 ELECTRICAL TAPPING TO NEAREST POWER SOURCE FOR THE LIGHTING FIXTURES AND ALL OTHER NECESSARY ELECTRICAL WORKS TO MAKE THE LIGHTING FIXTURES AND MONUMENT OPERATIONAL
3. ALL SIGNAGES, MATERIALS, WIRINGS, ETC THAT ARE RECOVERED OR TO BE REMOVED MUST BE PROPERLY DOCUMENTED AND TURNED OVER TO THE END USER.
4. CONTRACTOR TO CONDUCT NECESSARY GROUND MAINTENANCE AND RESTORATION WORKS FOR ANY DISRUPTION AND DESTRUCTION ON AFFECTED SITE DEVELOPMENTS WITHIN CLARK AIRPORT CITY.
5. ALL WORKS AND DESIGNS MUST ADHERE TO THE END USER'S BRANDING DESIGN SUBJECT TO THE APPROVAL OF THE END USER PRIOR IMPLEMENTATION OF WORKS.

LANDSCAPING SCOPE OF WORKS  
THE CONTRACTOR SHALL FULLY COORDINATE AND CONDUCT THE FOLLOWING:

1. LANDSCAPING
  - 1.1 LOW LEVEL LANDSCAPING SHALL BE OF LOW MAINTENANCE AND OF NATIVE SPECIES OF PLANTS WHICH INCLUDE BUT NOT LIMITED TO: (SUBJECT TO END USER'S APPROVAL PRIOR TO PLANTING)
    - BOUNGAINVILLEA
    - YUCCA
    - SINAMOMONG SUNGSONG
    - GUMAMELA
    - CRAPE JASPERINE
    - OTHER PROPOSED NATIVE SPECIES OF PLANTS

### REMOVAL OF EXISTING CRK ILLUMINATED SIGNAGES ALONG GIL PUYAT AVENUE



**A** GIL PUYAT AVENUE SITE PLAN  
A-12 SCALE NTS

	PREPARED BY: AR. JOAN MARYLE P. BANTIAG AR. RANEO V. LIWANAG	CHECKED AND APPROVED BY: AR. TRINIDAD G. ... ...	PROJECT: IMPROVEMENT OF SITE DEVELOPMENT WITHIN CLARK AVIATION CAPITAL CLARK CIVIL AVIATION COMPLEX CLARK AIRPORT ZONE, MABALACAT, PAMPANGA	APPROVED BY: ENGR. BRANIX C. AGUILERA ...	SHEET CONTENTS: GENERAL NOTES GIL PUYAT SITE PLAN EXISTING SITE PHOTOS	REVISIONS: NO.   DATE   DESCRIPTION 1	DATE: 17 JAN 2017	SHEET NO.: A-12/17
	DRAWN BY: JML/ML CHECKED BY: JML/ML DATE: JAN 24 SHEET NO.							

# INSTALLATION OF GATEWAY MARKERS ALONG STRATEGIC ENTRY POINTS WITHIN CLARK AIRPORT CITY

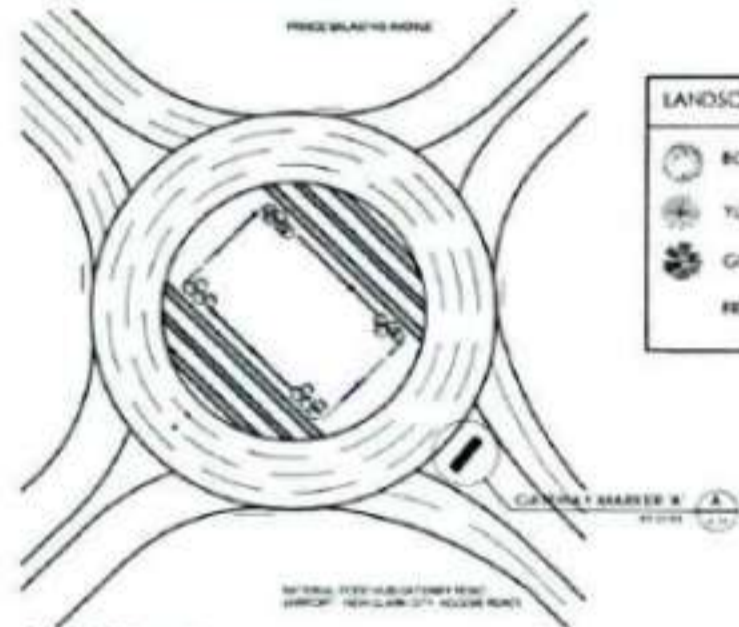
SCOPE OF WORKS  
THE CONTRACTOR SHALL FULLY COORDINATE AND CONDUCT THE FOLLOWING:

- GROUND CIVIL WORKS
  - CONDUCT NECESSARY EXCAVATION, BACK-FILLING AND LAND LEVELING WORKS NECESSARY FOR THE INSTALLATION OF GATEWAY MARKERS.
- INSTALLATION OF GATEWAY MARKER
  - CONSTRUCTION OF STRUCTURAL WORKS SUCH AS FOUNDATION, CONCRETE PLANT BOXES AND NECESSARY FINISHES
  - FABRICATION AND INSTALLATION OF STEEL STRUCTURAL SUPPORT FRAME FOR THE MARKER
  - FABRICATION AND MOUNTING OF ILLUMINATED MARKERS AT THEIR PRESCRIBED LOCATION
  - INSTALLATION OF SOLAR PANELS, BATTERIES AND ITS OTHER ACCESSORIES WITH ENCASMENT TO ENSURE SECURITY
  - CONTRACTOR TO PROVIDE SHOP DRAWINGS FOR ALL DETAILS NOT SPECIFIED ON PLAN SUBJECT FOR APPROVAL OF THE END USER PRIOR TO FABRICATION AND INSTALLATION
  - INSTALLATION OF LANDSCAPES AND ALL OTHER NECESSARY WORKS TO MAKE THE GATEWAY MARKER OPERATIONAL.
- ALL SIGNAGES, MATERIALS, WORKINGS, ETC THAT ARE RECOVERED OR TO BE REMOVED MUST BE PROPERLY DOCUMENTED AND TURNED OVER TO THE END USER.
- CONTRACTOR TO CONDUCT NECESSARY GROUND MAINTENANCE AND RESTORATION WORKS FOR ANY DISRUPTION AND DESTRUCTION ON AFFECTED SITE DEVELOPMENTS WITHIN CLARK AIRPORT CITY.
- ALL WORKS AND DESIGNS MUST ADHERE TO THE END USER'S BRANDING DESIGN SUBJECT TO THE APPROVAL OF THE END USER PRIOR IMPLEMENTATION OF WORKS.



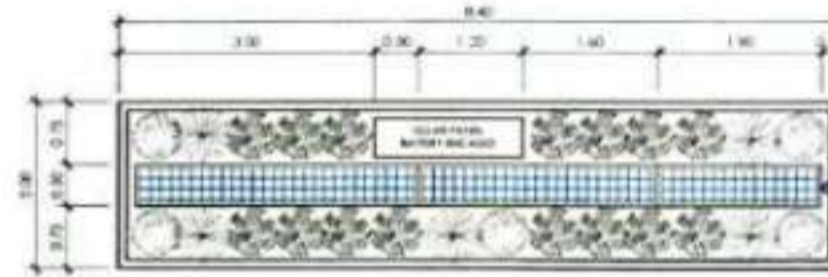
SITE ELEVATION  
GATEWAY MARKER 'A'

ONE CLARK BOULEVARD  
CURRENTLY KNOWN AS AIRPORT - NEW CLARK CITY ACCESS ROAD (ANAR)

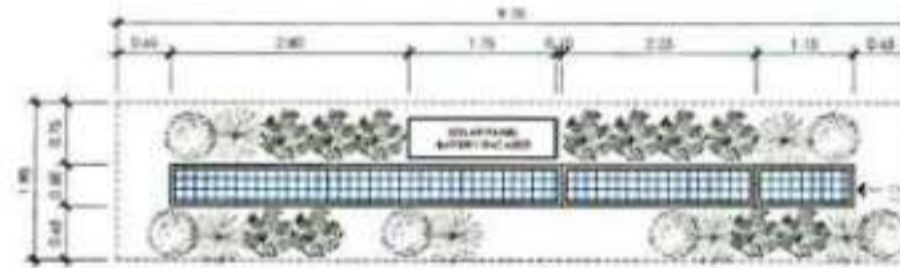


SITE PLAN  
GATEWAY MARKER 'A'

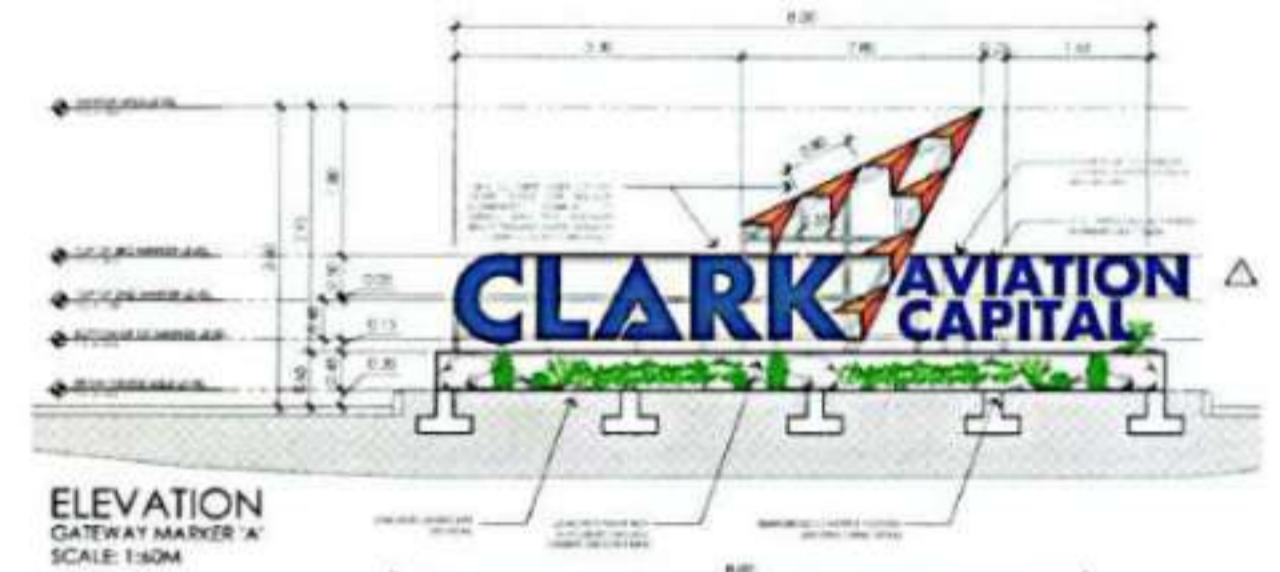
LANDSCAPING PALLETTE	
	12 PCS
	16 PCS
	40 PCS
	34 SQM



PLAN  
GATEWAY MARKER 'A'  
SCALE: 1:60M



PLAN  
GATEWAY MARKER 'B'  
SCALE: 1:60M



ELEVATION  
GATEWAY MARKER 'A'  
SCALE: 1:60M

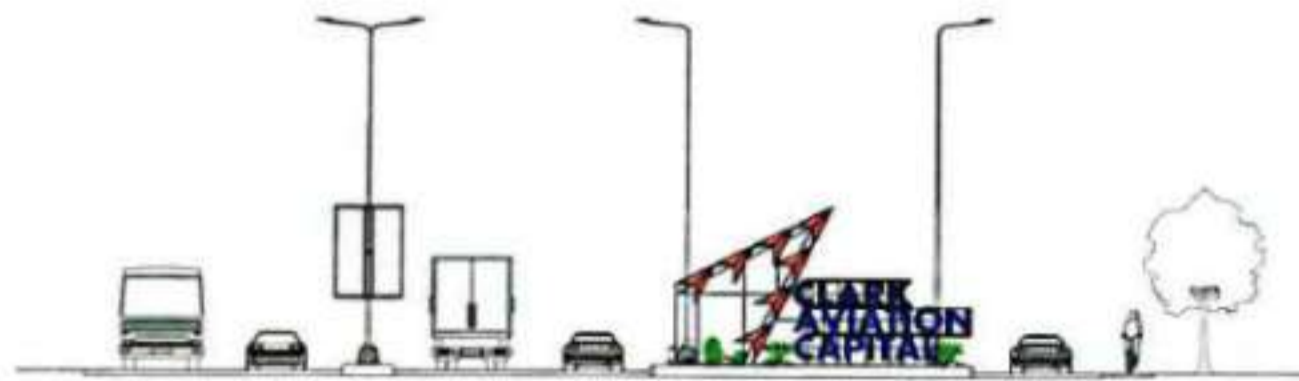


ELEVATION  
GATEWAY MARKER 'B'  
SCALE: 1:60M

C  
A-13 GATEWAY MARKER DETAIL  
SCALE 1:60M



SITE PLAN  
GATEWAY MARKER 'B'



GIL PUYAT AVENUE  
VIEW COMING FROM CLARK MABALACAT GATE

ONE CLARK BOULEVARD  
RIGHT TURN FROM GIL PUYAT AVENUE

SITE ELEVATION  
GATEWAY MARKER 'A'



PROPOSED BY:  
**AR. PASCAL V. LUWANAG**  
DEPUTY HEAD  
CLARK AIRPORT CITY DEVELOPMENT OF PUBLIC PARKS  
AND OPEN SPACES (DPPS)

DESIGNED AND DRAWN BY:  
**AR. TRINELYN M. PASCIA, JR.**  
CLARK AIRPORT CITY DEVELOPMENT OF PUBLIC PARKS  
AND OPEN SPACES (DPPS)

CONTRACTOR USE TO SUBMIT SHOP DRAWINGS TO  
APPLICABLE AGENCIES FOR CONSTRUCTION OF WORK.  
ALL DIMENSIONS ARE TO BE SHOWN ON SITE BY THE  
CONTRACTOR.  
ALL DIMENSIONS ARE TO BE MANUALLY REPORTED TO  
THE ARCHITECT'S PROJECT CONSULTANTS. THE  
CONTRACTOR SHALL BE RESPONSIBLE FOR THE  
PROVISION OF ALL MATERIALS & CONTRACT BE REPRODUCED  
WITHOUT WRITTEN CONSENT. NO. 8888

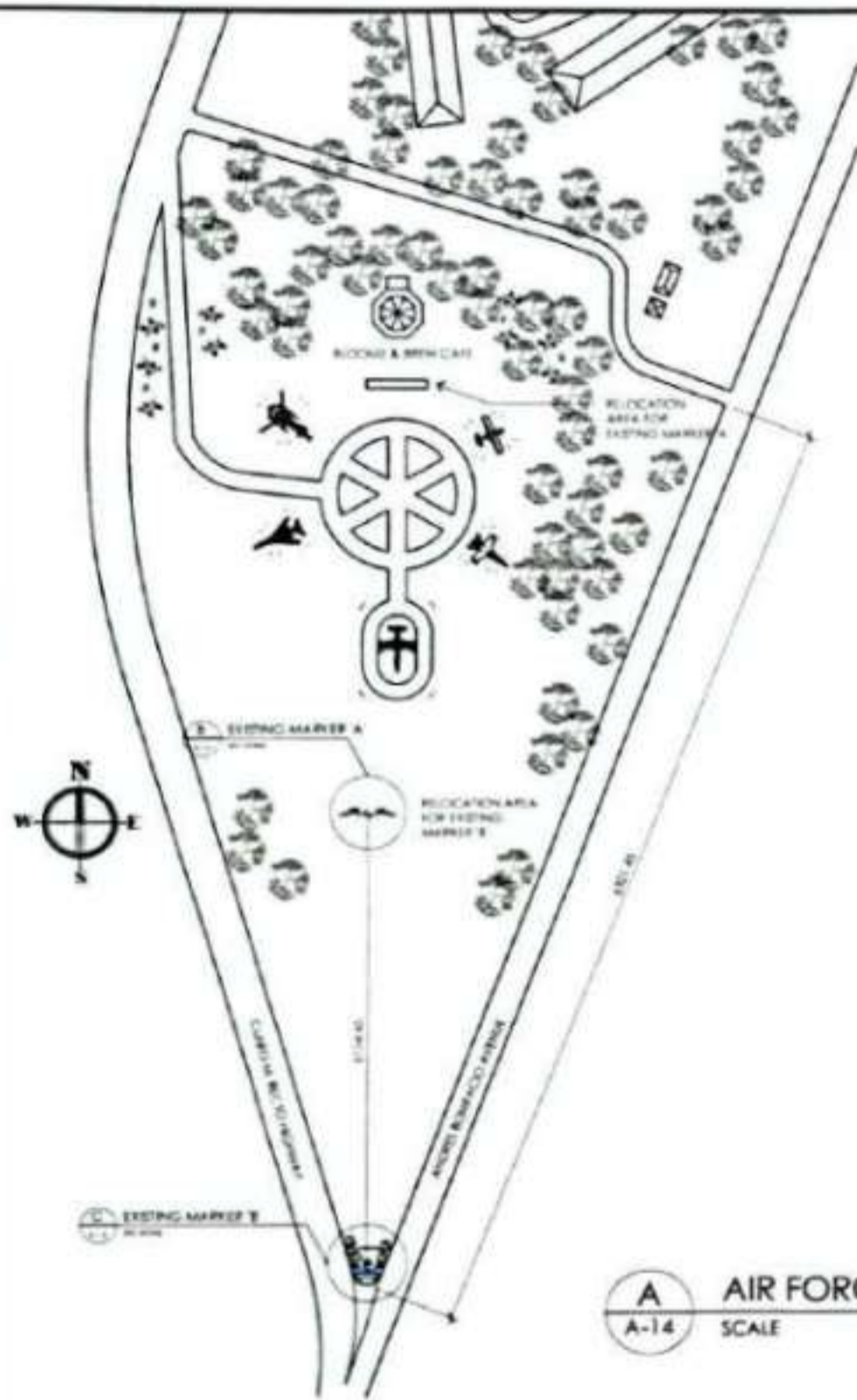
PROJECT:  
IMPROVEMENT OF SITE DEVELOPMENT  
WITHIN CLARK AVIATION CAPITAL  
CLARK CIVIL AVIATION COMPLEX  
CLARK FREEPORT ZONE MABALACAT, PAMPANGA

APPROVED BY:  
**ENGR. BRAYAN C. AGUILERA**  
VICE PRESIDENT FOR BUSINESS DEVELOPMENT AND OPERATIONS  
CLARK INTERNATIONAL AIRPORT CORPORATION

SHEET CONTENTS:  
GENERAL NOTES  
GIL PUYAT AVENUE SITE PLAN  
PRINCE BALAGtas SITE AVENUE SITE PLAN  
GATEWAY MARKER DETAIL

REVISIONS	DATE	BY	CHKD BY	APP'D BY

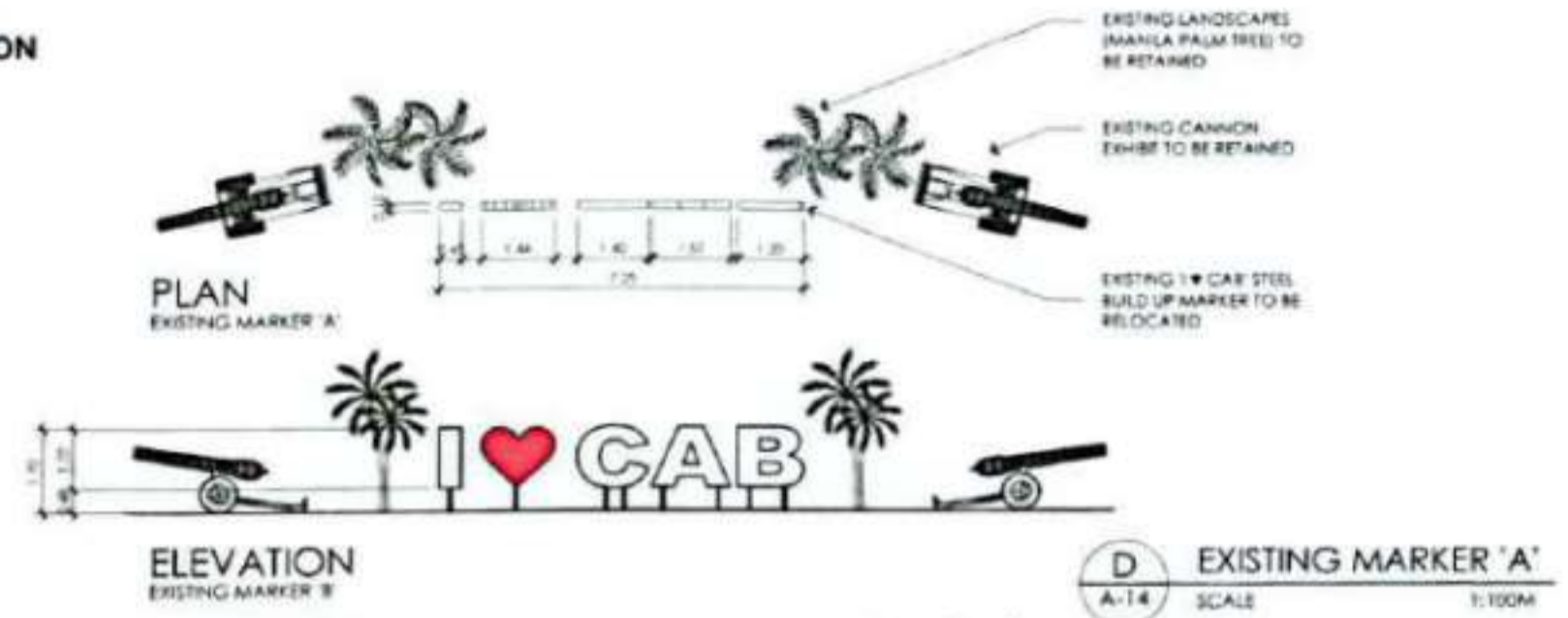
PREPARED BY: **AR. PASCAL V. LUWANAG**  
 CHECKED BY: **AR. TRINELYN M. PASCIA, JR.**  
 DATE: **APR 24**  
 SHEET NO: **A-13/17**  
 PROJ. NO:



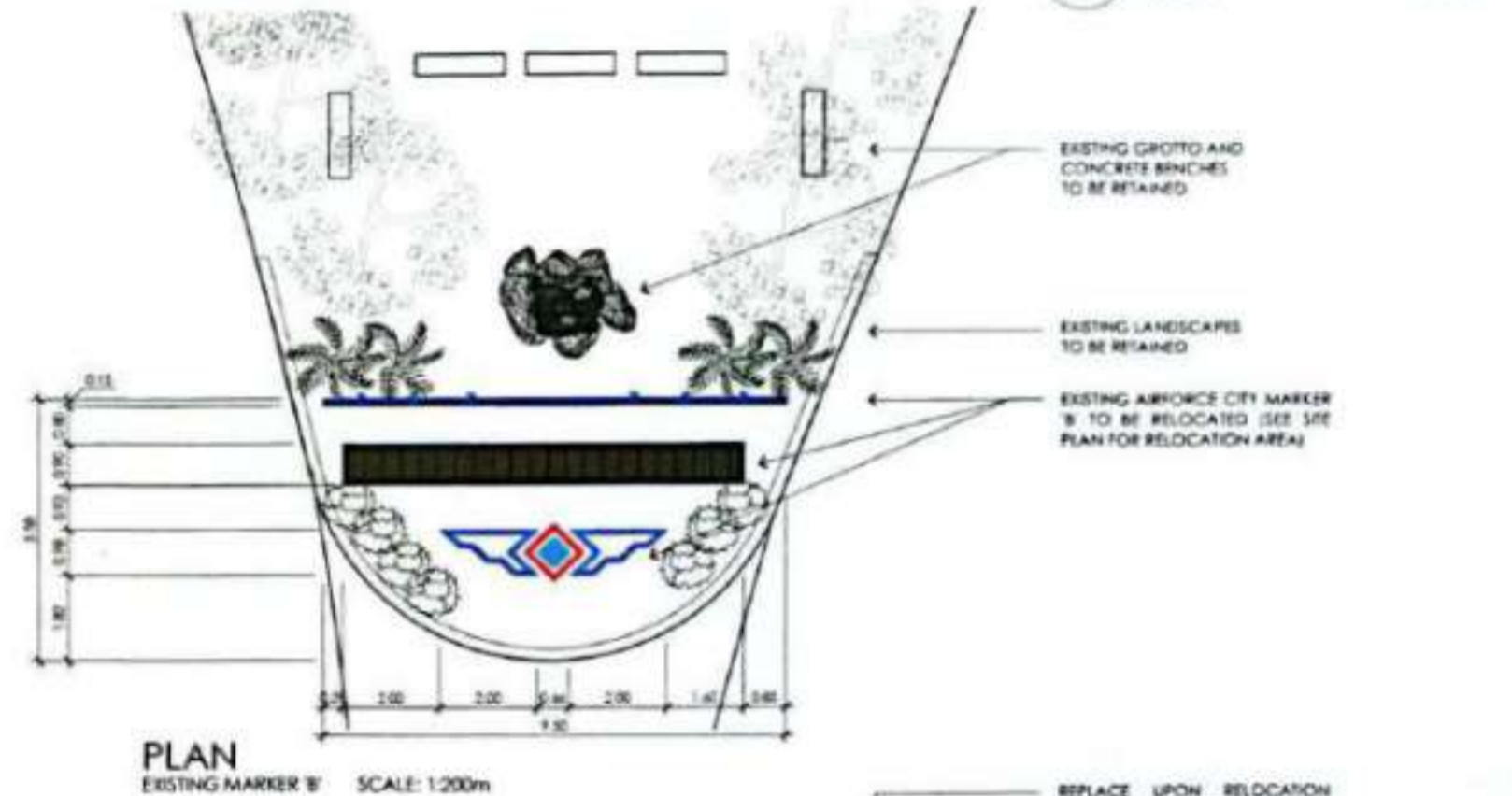
**A AIR FORCE CITY PARK SITE PLAN**  
A-14 SCALE 1:1500M

**INSTALLATION, REPAIR, REMOVAL AND RELOCATION OF GATEWAY MARKERS AND SIGNAGES**

- SCOPE OF WORKS  
THE CONTRACTOR SHALL FULLY COORDINATE AND CONDUCT THE FOLLOWING:
- CONTRACTOR TO FURNISH SHOP DRAWINGS AND DETAIL DRAWINGS OF ALL MARKERS AND SIGNAGES FOR RELOCATION ACCORDING TO ACTUAL SITE CONDITIONS FOR THE APPROVAL OF THE END USER.
  - GROUND CIVIL WORKS
    - CONDUCT NECESSARY EXCAVATION, BACK-FILLING AND OTHER CIVIL WORKS NECESSARY FOR THE INSTALLATION AND RELOCATION OF THE MARKERS AND SIGNAGES
  - ELECTRICAL WORKS CONCERNING THE INSTALLATION OF ALL LIGHTING FIXTURES WHICH INCLUDES BUT NOT LIMITED TO:
    - ELECTRICAL LIGHTING CABLE LAYING
    - ELECTRICAL POWER CABLE LAYING (IF NECESSARY)
    - ELECTRICAL TAPPING TO NEAREST POWER SOURCE AND ALL OTHER NECESSARY ELECTRICAL WORKS FOR THE LIGHTING FIXTURES
  - LANDSCAPING
    - RETENTION OF ALL EXISTING SOFTSCAPES AND HARDSCAPES
    - REPLACEMENT OF ALL DAMAGED AND REMOVED PLANTS AND PARK FURNITURE DURING THE OPERATION
  - INSTALLATION OF NEW GATEWAY MARKER
    - CONSTRUCTION OF STRUCTURAL WORKS SUCH AS FOUNDATION, CONCRETE PLANT BOXES AND NECESSARY FINISHES
    - FABRICATION AND INSTALLATION OF STEEL STRUCTURAL SUPPORT FRAME FOR THE MARKER
    - FABRICATION AND MOUNTING OF ILLUMINATED MARKERS AT THEIR PRESCRIBED LOCATION
    - INSTALLATION OF SOLAR PANELS, BATTERIES AND ITS OTHER ACCESSORIES WITH ENCASEMENT TO ENSURE SECURITY
    - INSTALLATION OF LANDSCAPES AND ALL OTHER NECESSARY WORKS TO MAKE THE GATEWAY MARKER OPERATIONAL
  - CONTRACTOR TO VERIFY LOCATIONS OF MARKERS INDICATED ON PLAN ACCORDING TO ACTUAL SITE CONDITIONS FOR THE APPROVAL OF THE END USER.
  - ALL SIGNAGES, MATERIALS, WIRINGS, ETC THAT ARE RECOVERED OR TO BE REMOVED MUST BE PROPERLY DOCUMENTED AND TURNED OVER TO THE END USER.
  - CONTRACTOR TO CONDUCT NECESSARY GROUND MAINTENANCE AND RESTORATION WORKS FOR ANY DISRUPTION AND DESTRUCTION ON AFFECTED SITE DEVELOPMENTS WITHIN CLARK AIRPORT CITY.
  - ALL WORKS AND DESIGNS MUST ADHERE TO THE END USER'S BRANDING DESIGN SUBJECT TO THE APPROVAL OF THE END USER PRIOR IMPLEMENTATION OF WORKS.



**D EXISTING MARKER 'A'**  
A-14 SCALE 1:100M

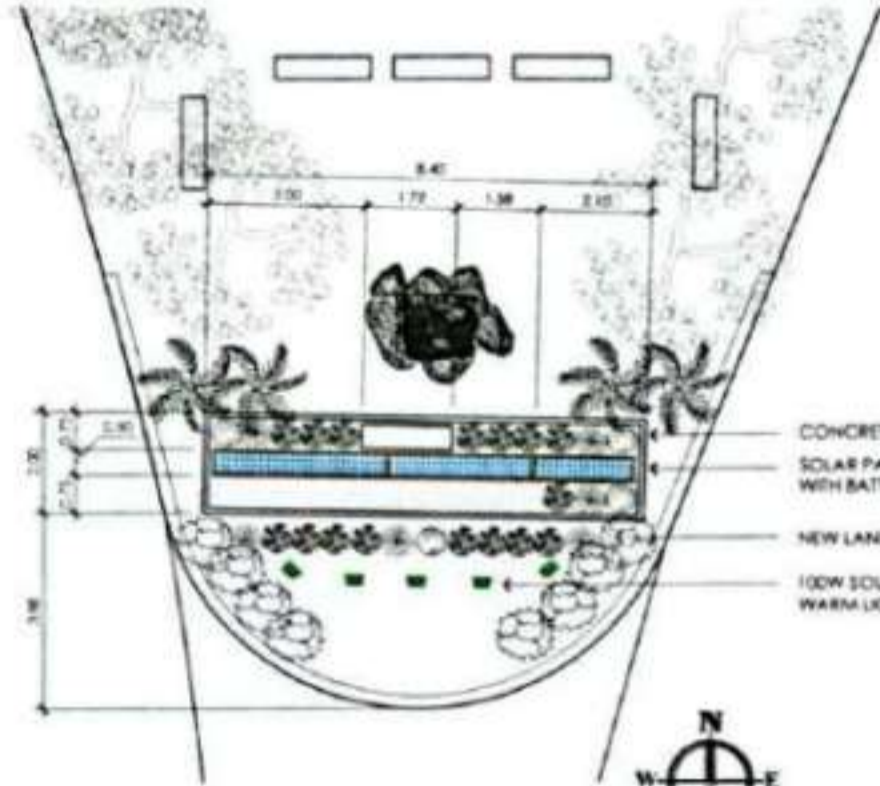


**E EXISTING MARKER 'B'**  
A-14 SCALE 1:100M

**TABLE OF EXISTING AND PROPOSED MARKERS WITHIN AIRFORCE CITY PARK**

ITEM	DIMENSION (H X W)		LOCATION		REMARKS
	EXISTING	PROPOSED	EXISTING	PROPOSED	
AIR FORCE CITY MARKER 'B'	44.50 X 45.50	44.50 X 45.50	CORNER ON RECTO AND A BONIFACIO AVE.	CURRENT LOCATION OF I ♥ CAB SIGNAGE	SEE DETAILS
I ♥ CAB BUILD UP SIGNAGE 'A'	41.70 X 47.25	41.70 X 47.25	CURRENT LOCATION WITHIN THE PARK	BETWEEN BLOOMING & BREW CAFE AND PARK	SEE DETAILS
AIRCRAFTS	AS - IS	AS - IS	CURRENT LOCATION WITHIN THE PARK	CURRENT LOCATION WITHIN THE PARK	SEE DETAILS
PYLON MARKER	N/A	SEE DETAIL	N/A	ENTRANCE TO AIRCRAFT PARK AND CAFE	SEE DETAILS
CLARK AIRPORT CITY MARKER	N/A	SEE DETAIL	N/A	EXISTING LOCATION OF MARKER 'B'	SEE DETAILS

	PREPARED BY: AR. JOAN MARVILLE P. BANTUG AR. ARNELDO V. LIRANAG	CHECKED AND REVIEWED BY: AR. FRANCISCO G. OCHOA	PROJECT: IMPROVEMENT OF SITE DEVELOPMENT WITHIN CLARK AVIATION CAPITAL CLARK CIVIL AVIATION COMPLEX CLARK FREEPORT ZONE, MABALACAT, PAMPANGA	APPROVED BY: ENGR. BAYLENE C. AGUILERA	SHEET CONTENTS: GENERAL NOTES AIR FORCE CITY PARK SITE PLAN TABLE OF EXISTING & PROPOSED MARKERS EXISTING MARKER 'A' DETAIL EXISTING MARKER 'B' DETAIL	REVISIONS: 1. REVISED TO CLARIFY MARKER LOCATIONS, DATE:	DATE: SHEET NO.: A-14/17
	DATE: 10/20/2017 PLOT: 10/20/2017 SHEET: 10/20/2017	DATE: 10/20/2017 PLOT: 10/20/2017 SHEET: 10/20/2017	DATE: 10/20/2017 PLOT: 10/20/2017 SHEET: 10/20/2017	DATE: 10/20/2017 PLOT: 10/20/2017 SHEET: 10/20/2017	DATE: 10/20/2017 PLOT: 10/20/2017 SHEET: 10/20/2017	GENERAL NOTES: ALL WORKS TO BE DONE IN ACCORDANCE WITH THE APPROVED DRAWINGS AND SPECIFICATIONS. THE CONTRACTOR SHALL BE RESPONSIBLE FOR OBTAINING ALL NECESSARY PERMITS AND APPROVALS FROM THE APPROPRIATE AGENCIES. ALL MATERIALS AND WORKMANSHIP SHALL BE SUBJECT TO INSPECTION AND APPROVAL BY THE ENGINEER.	CHECKED BY: DATE: JAN 20 SHEET NO.: A-14/17

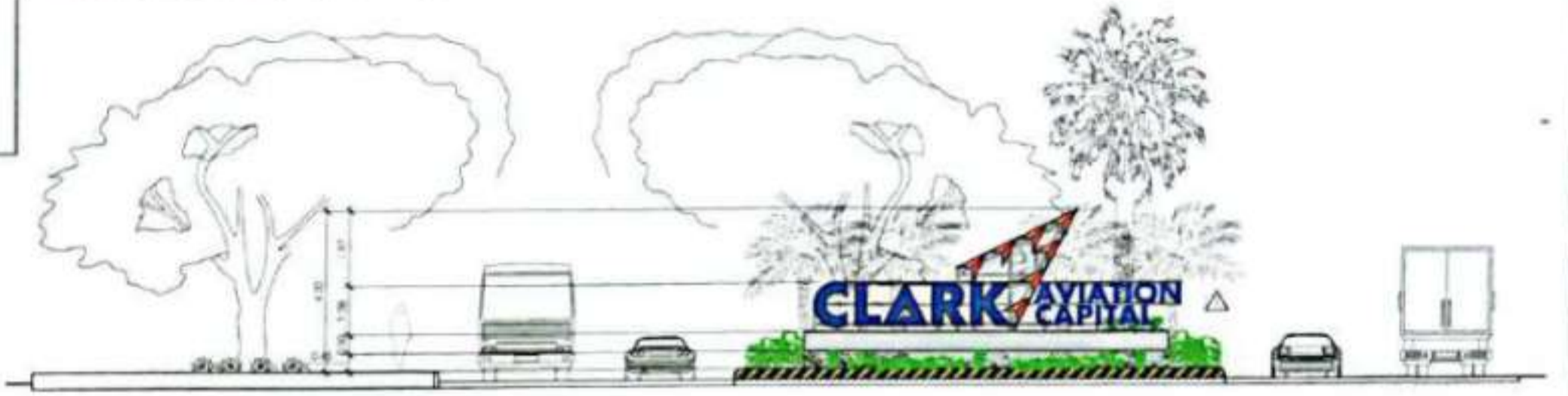


LANDSCAPING PALLETTE	
	BOUGAINVILLEA 18 PCS
	YUCCA 22 PCS
	GOLDEN BOXWOOD 40 PCS
	FROG GRASS 34 SQM

- CONCRETE PLANT BOX
- SOLAR PANEL WITH BATTERY
- NEW LANDSCAPE (SEE TABLE)
- 100W SOLAR FLOOD LIGHT IN WARM LIGHT ACCENT



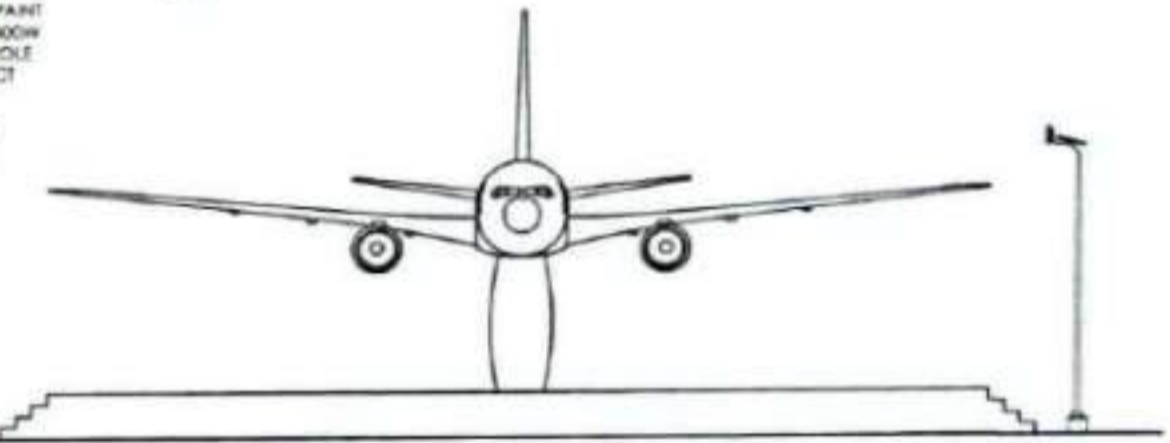
**SITE ELEVATION**  
PROPOSED CLARK AIRPORT CITY GATEWAY MARKER



CLARO M. RECTO HIGHWAY  
VIEW COMING FROM MANUEL A. ROKAS HIGHWAY

ANDRES BONIFACIO AVENUE  
VIEW COMING FROM MANUEL A. ROKAS HIGHWAY

**A CLARK AIRPORT CITY GATEWAY MARKER**  
SCALE 1:100M



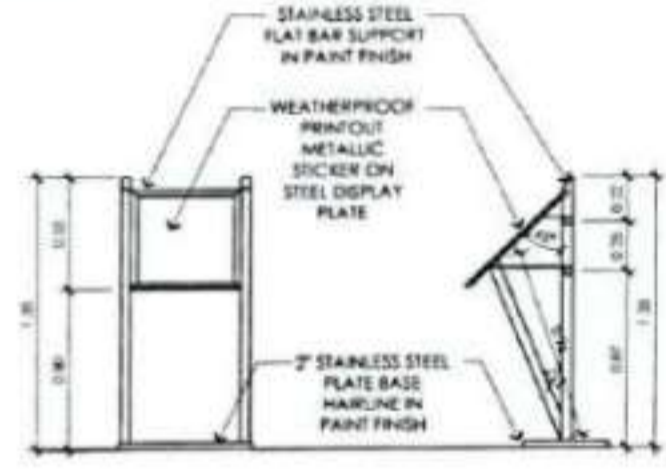
**SITE ELEVATION**  
AIR FORCE PARK SCALE: 1:100m

**PLAN**  
PROPOSED CLARK AIRPORT CITY GATEWAY MARKER

**CONSTRUCTION AND INSTALLATION OF PYLON MARKER, INFORMATIVE SIGNAGES AND STEEL LIGHTING POLES**

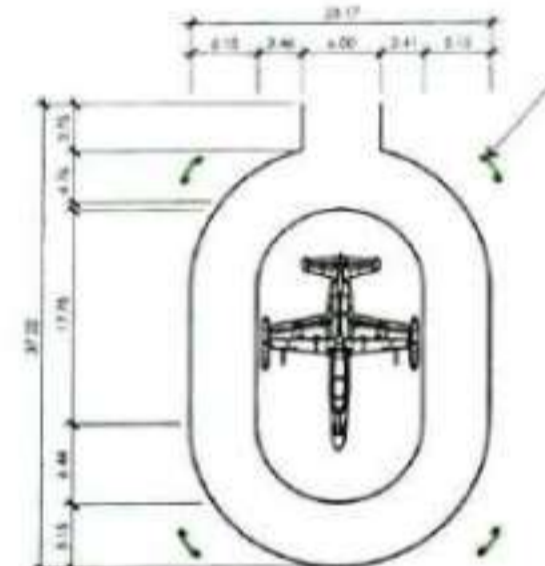
**SCOPE OF WORKS**  
THE CONTRACTOR SHALL FULLY COORDINATE AND CONDUCT THE FOLLOWING:  
CONTRACTOR TO FURNISH SHOP DRAWINGS AND DETAIL DRAWINGS OF INFORMATIVE SIGNAGES, PYLON MARKER AND STEEL LIGHTING POLES

- GROUND CIVIL WORKS
  - CONDUCT NECESSARY EXCAVATION, BACK-FILLING AND OTHER CIVIL WORKS NECESSARY FOR THE REPLACEMENT OF THE INFORMATIVE SIGNAGES
- CONTRACTOR TO VERIFY LOCATIONS OF INFORMATIVE SIGNAGES, PYLON MARKER AND LIGHTING POLES ACCORDING TO ACTUAL SITE CONDITIONS FOR THE APPROVAL OF THE END USER.
- ALL SIGNAGES, MATERIALS, WIRINGS, ETC THAT ARE RECOVERED OR TO BE REMOVED MUST BE PROPERLY DOCUMENTED AND TURNED OVER TO THE END USER.
- ELECTRICAL WORKS CONCERNING THE INSTALLATION OF ALL LIGHTING FIXTURES WHICH INCLUDES BUT NOT LIMITED TO:
  - ELECTRICAL LIGHTING CABLE LAYING
  - ELECTRICAL POWER CABLE LAYING (IF NECESSARY)
  - ELECTRICAL TAPPING TO NEAREST POWER SOURCE AND ALL OTHER NECESSARY ELECTRICAL WORKS FOR THE LIGHTING FIXTURES
- CONTRACTOR TO CONDUCT NECESSARY GROUND MAINTENANCE AND RESTORATION WORKS FOR ANY DISRUPTION AND DESTRUCTION ON AFFECTED SITE DEVELOPMENTS WITHIN CLARK AIRPORT CITY.
- ALL WORKS AND DESIGNS MUST ADHERE TO THE END USER'S BRANDING DESIGN SUBJECT TO THE APPROVAL OF THE END USER PRIOR IMPLEMENTATION OF WORKS.



**PLAN**  
INFORMATIVE SIGNAGE SCALE: 1:25m

QUANTITY: FIVE (5) UNITS  
SPEC: LAYOUT AND COLOR VERIFY TO ARCHITECT



**PLAN**  
AIRCRAFT POLE SCALE: 1:400m

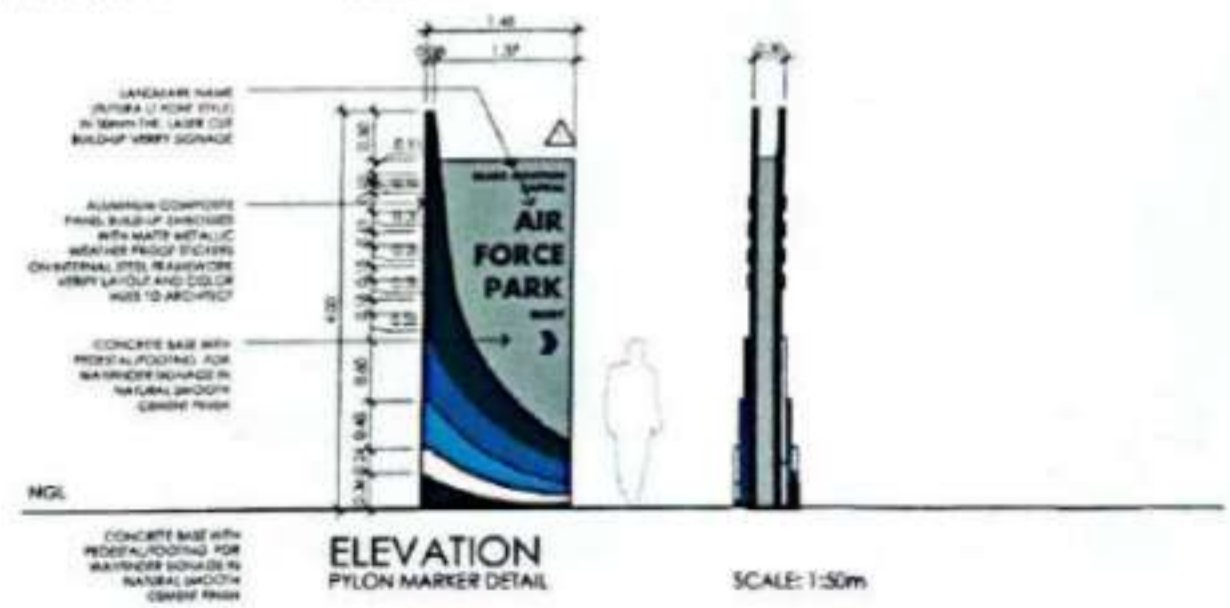
QUANTITY: FIVE (5) UNITS  
SPEC: LAYOUT AND COLOR VERIFY TO ARCHITECT

**FLOOD LIGHT DETAIL**  
AIR FORCE CITY PARK

QUANTITY: SEE SCHEDULE OF FLOOD LIGHTS  
SPEC: SEE SCHEDULE OF FLOOD LIGHTS  
REMARKS: BOLT/SCREWED MOUNTED ON CONCRETE PEDESTAL SUBMERGED BELOW GRADE TO ENSURE STABILITY AND SECURITY  
UNIT INCLUSIVE OF PANELS AND BATTERIES

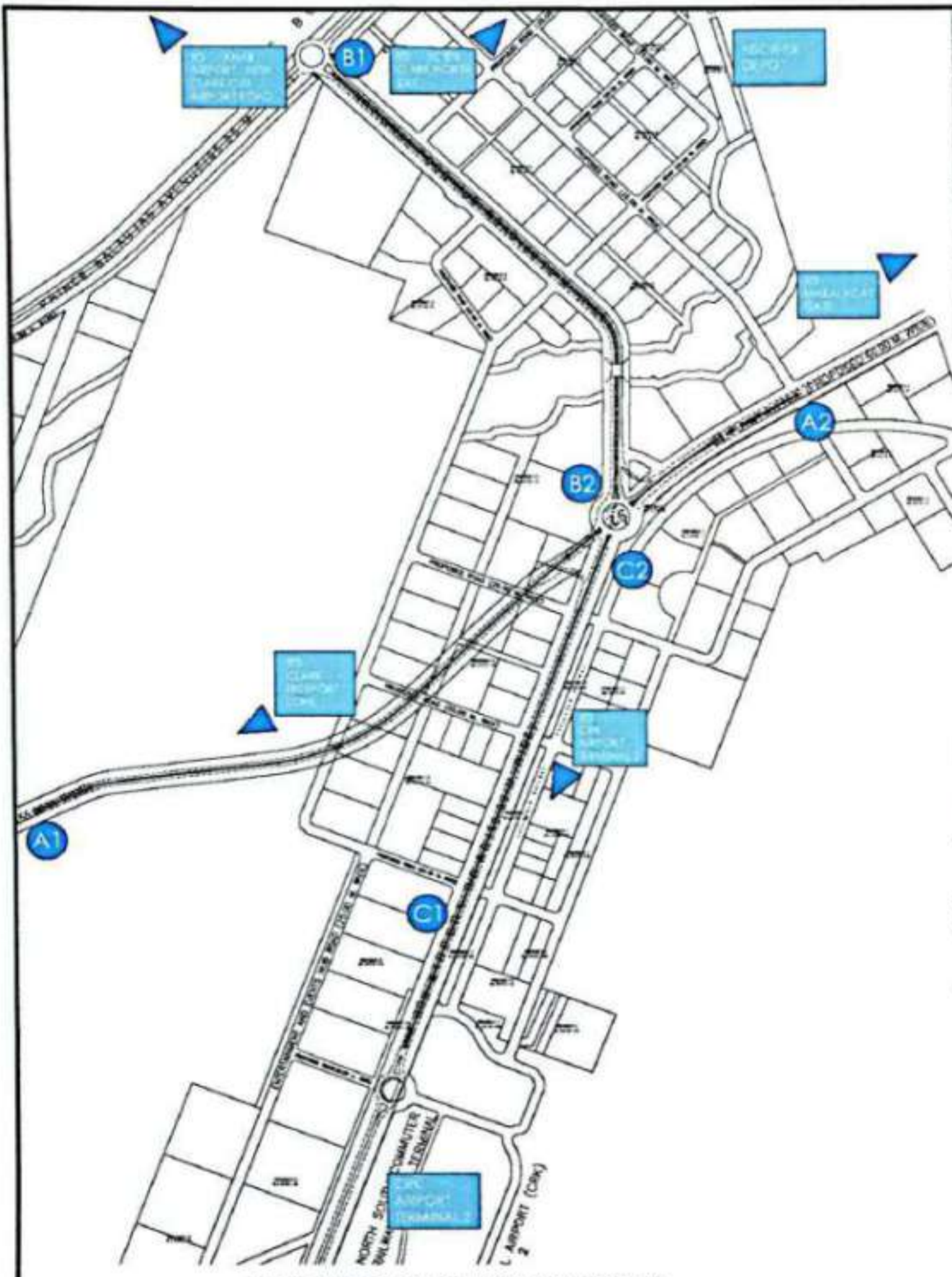
SCHEDULE OF SOLAR FLOOD LIGHTS			
LOCATION	ACCENT	WATTAGE	QUANTITY
CLARK AIRPORT CITY MARKER	WW	100W	FIVE (5) UNITS
CANNONS	WW	200W	EIGHT (8) UNITS
AIRCRAFT EXHIBITS	WY, BLUE	300W	THIRTY (30) UNITS
EXISTING MARKER 'A'	WW	300W	FOUR (4) UNITS
EXISTING MARKER 'B'	WW	300W	SIX (6) UNITS
MAIN AIRCRAFT EXHIBIT	WY, BLUE	400W	EIGHT (8) UNITS

WW - WARM WHITE



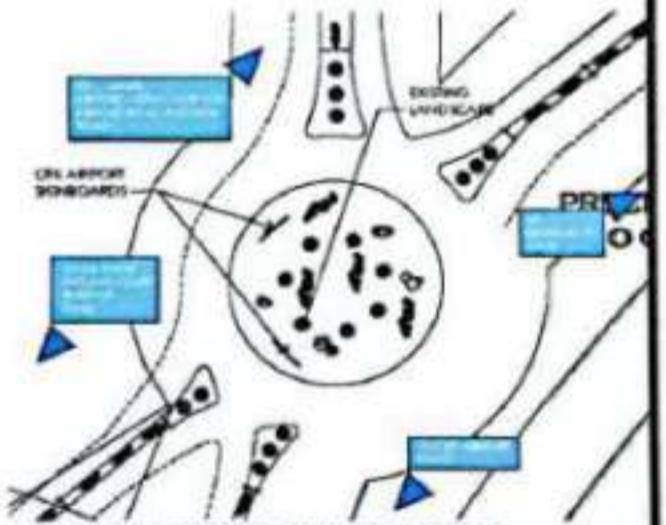
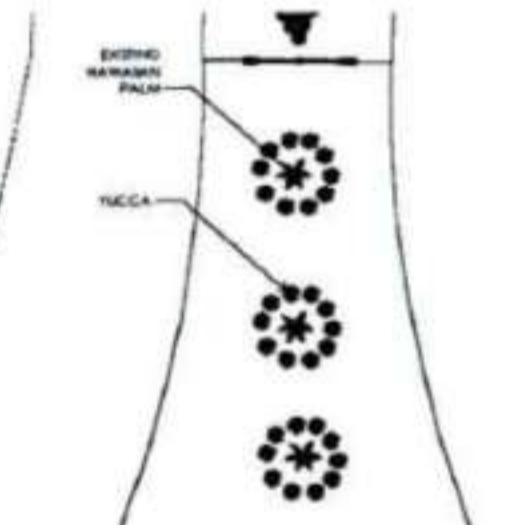
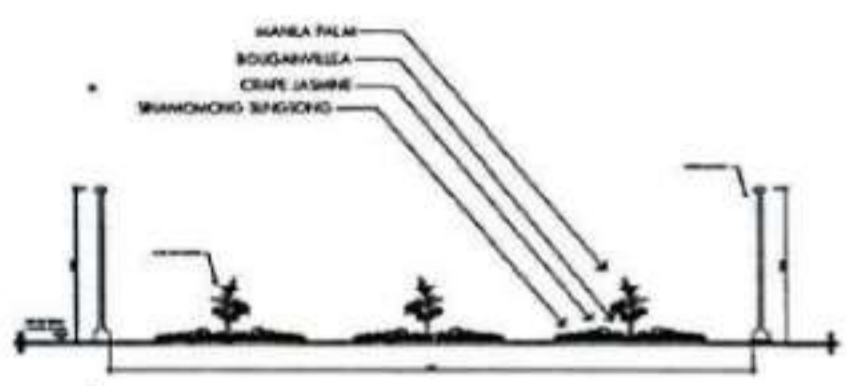
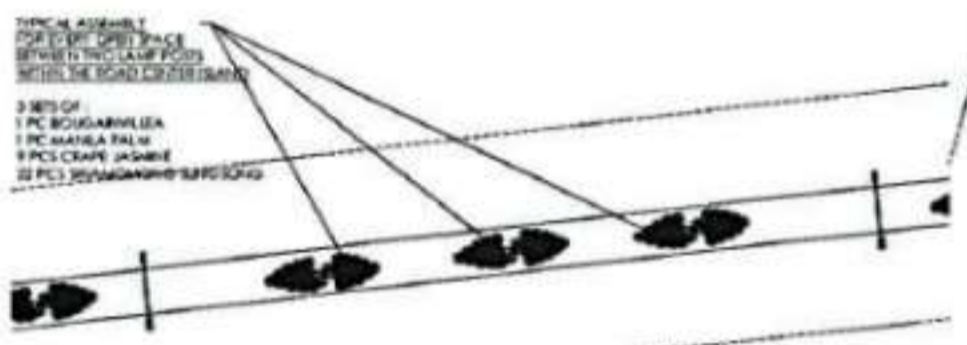
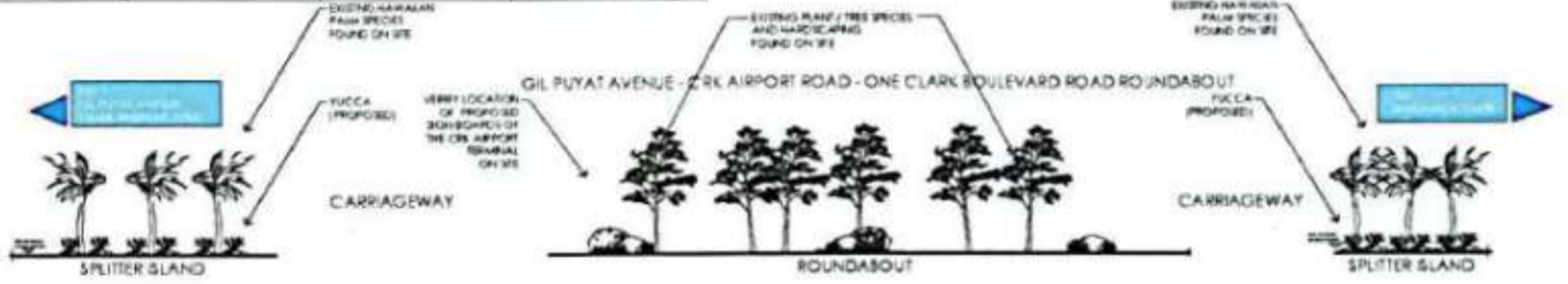
**ELEVATION**  
PYLON MARKER DETAIL SCALE: 1:50m

	PREPARED BY: AIR JOAN MARIE P. BANTUG AIR DANLO LIWANAG	CHECKED AND REVIEWED BY: ARNELYNICO GARCIA JR. CLARK INTERNATIONAL AIRPORT COMPANY	PROJECT: IMPROVEMENT OF SITE DEVELOPMENT WITHIN CLARK AVIATION COMPLEX CLARK FREEPORT ZONE, MABALACAT, PAMPANGA	APPROVED BY: ENGR. BRANCO C. AGUILERA VICE PRESIDENT FOR BUSINESS DEVELOPMENT AND OPERATIONS CLARK INTERNATIONAL AIRPORT COMPANY	SHEET CONTENTS: GENERAL NOTES CAE GATEWAY MARKER DETAIL INFORMATIVE SIGNAGE & POLE DETAIL FLOOD LIGHT DETAIL & SCHEDULE PYLON MARKER DETAIL	REVISIONS: 1. REVISION TO CLARK AIRPORT CAPITAL, 2017-2017	DATE: 2017-07-20	SHEET NO: A-15/17	CHECKED BY: DATE: AM '17
	PREPARED BY: AIR JOAN MARIE P. BANTUG AIR DANLO LIWANAG	CHECKED AND REVIEWED BY: ARNELYNICO GARCIA JR. CLARK INTERNATIONAL AIRPORT COMPANY	PROJECT: IMPROVEMENT OF SITE DEVELOPMENT WITHIN CLARK AVIATION COMPLEX CLARK FREEPORT ZONE, MABALACAT, PAMPANGA	APPROVED BY: ENGR. BRANCO C. AGUILERA VICE PRESIDENT FOR BUSINESS DEVELOPMENT AND OPERATIONS CLARK INTERNATIONAL AIRPORT COMPANY	SHEET CONTENTS: GENERAL NOTES CAE GATEWAY MARKER DETAIL INFORMATIVE SIGNAGE & POLE DETAIL FLOOD LIGHT DETAIL & SCHEDULE PYLON MARKER DETAIL	REVISIONS: 1. REVISION TO CLARK AIRPORT CAPITAL, 2017-2017	DATE: 2017-07-20	SHEET NO: A-15/17	CHECKED BY: DATE: AM '17



**ROAD CENTER ISLAND DIMENSION TABULATION**

	LENGTH (METERS)	WIDTH (METERS)	AREA (SQUARE METERS)
① TO ② ALONG ONE PUYAT AVENUE	2143.19 M	EXISTING ISLAND TO ONE (ONE) ROUNDABOUT 3.0 M EXISTING ROUNDABOUT TO NEXI (ONE) DEPOSIT ACCESS POINT VARIES FROM 3.0 - 6.3 M	4303.44 SQM, INCLUSIVE OF SPLITTER ISLAND 1463.47 SQM, INCLUSIVE OF SPLITTER ISLAND
③ TO ④ ALONG NATIONAL FOOD SUPERROAD	1272 M	9.0 M	11635.78 SQM, INCLUSIVE OF SPLITTER ISLAND
⑤ TO ⑥ ALONG ONE CLARK AIRPORT ROAD	1253.33 M	3.20 M	4092.76 SQM, INCLUSIVE OF SPLITTER ISLAND



**NOTE:**

THE ACTUAL LENGTH, WIDTH, AREA, AND ALL OTHER DETAILS OF THE ROAD CENTER ISLANDS, SPLITTER ISLANDS AND ROUNDABOUTS SHALL BE VERIFIED THROUGH AN OCULAR ON-SITE INSPECTION. IT IS HIGHLY ADVISED TO INTEGRATED ON-SITE INSPECTION BEFORE ACTUAL CONDUCT OF LANDSCAPING WORKS.

THE EXISTING LANDSCAPING ELEMENTS INSTALLED WITHIN THE SUBJECT LOCATIONS SHALL BE TAKEN INTO CONSIDERATION BEFORE THE LANDSCAPING WORKS INCORPORATING NEW SPECIES AND GRASS COVER. VERIFY INPUTS FROM PERSONS AND ENTITIES WITH EXPERTISE IN THE PLANNING AND DELIVERY OF LANDSCAPING SERVICES.

**A** GIL PUYAT AVENUE, ONE CLARK BOULEVARD, AND AIRPORT ROAD  
SITE PLAN OF CCAC ROADS FOR LANDSCAPE ENHANCEMENT  
SCALE: A-16

**C** GIL PUYAT AVENUE, ONE CLARK BOULEVARD, AND AIRPORT ROAD  
TYPICAL DETAIL OF CENTER ISLAND LANDSCAPE  
SCALE: A-16

**D** GIL PUYAT AVENUE, ONE CLARK BOULEVARD, AND AIRPORT ROAD  
TYPICAL SPLITTER ISLAND LANDSCAPE  
SCALE: A-16

	PREPARED BY: MR. SHEENA MERYL A. DAVID MR. AR RANLO V. UNANAC MR. AR FERRICO G. PANCIA JR.	CHECKED AND REVIEWED BY: MR. AR RANLO V. UNANAC MR. AR FERRICO G. PANCIA JR.	PROJECT: IMPROVEMENT OF SITE DEVELOPMENT WITHIN CLARK AVIATION CAPITAL CLARK CIVIL AVIATION COMPLEX CLARK FREEPORT (ONE, HAMBALACAT PAMPANGA)	DESIGNED BY: ENGR. BRUNO C. AGULERA VICE PRESIDENT FOR BUSINESS DEVELOPMENT AND OPERATIONS CLARK INTERNATIONAL AIRPORT CORPORATION	SHEET CONTENTS: SECTION AND DETAILS OF ROUNDABOUT TYPICAL DETAILS OF CENTER ISLAND TYPICAL DETAILS OF SPLITTER ISLAND SECTION OF ROUNDABOUT DIMENSIONS AND LANDSCAPING PALLETTE	REVISIONS: NO.   DATE   DESCRIPTION   CHECKED BY   DATE   SHEET NO.
	SHEET NO.   TOTAL SHEETS   DATE   SCALE   DRAWN BY   CHECKED BY   SHEET NO.	A-16   17   2017   A-16   [Signature]   [Signature]   A-16/17				



**LANDSCAPING**

LANDSCAPING SHALL BE OF LOW MAINTENANCE AND OF NATIVE SPECIES OF PLANTS WHICH ARE NOT LISTED TO (SUBJECT TO THE SUBSEQUENT REVISIONS TO THE LIST)

- LANDSCAPING SHALL BE OF LOW MAINTENANCE AND OF NATIVE SPECIES OF PLANTS WHICH ARE NOT LISTED TO (SUBJECT TO THE SUBSEQUENT REVISIONS TO THE LIST)
- CONTRACTOR SHALL BE RESPONSIBLE FOR THE SELECTION AND SPECIFICATION OF PLANTS TO BE USED IN THE LANDSCAPING WORKS. THE CONTRACTOR SHALL BE RESPONSIBLE FOR THE SELECTION AND SPECIFICATION OF PLANTS TO BE USED IN THE LANDSCAPING WORKS. THE CONTRACTOR SHALL BE RESPONSIBLE FOR THE SELECTION AND SPECIFICATION OF PLANTS TO BE USED IN THE LANDSCAPING WORKS.

**TABULATION OF LANDSCAPE ELEMENTS**

NO.	LOCATION	DESCRIPTION	EXISTING QTY.	PROPOSED QTY.
1	HAWAIIAN PALM TREE	NEAREST NATIVE PALM TREE WHICH IS A SINGLE TRUNK AND ARE EMPLOYED BY LARGE TROPICAL FRONTS ON ISLANDS. MEASURING 2 TO 10 FT HIGH - 1 M LONG. CORNICE BRANCHES HAVE GRACEFUL ARCHING BRANCHES. NEW PLANTED: ROUND FOLIAGE.	8	
2	MANILA PALM TREE	THE ARCHING BRANCHES OF AN ELEGANT PALM TREE COMMONLY FOUND IN THE MANILA PALM IS DESTROYED BY FIRE. BRANCHES HAVE TO BE TOPPED WITH A CROWN OF DENSE ARCHING BRANCHES.	42	42 (1000 TO 1500 CM)
3	BOUGAINVILLEA	NATIVE TO SOUTH AMERICA. BRANCHES OF THIS PLANT ARE COLORED IN THE PHILIPPINES WITH BRANCHES OF MULTIPLE BRANCHES IN VARIOUS COLORS OF RED, PURPLE, PINK, YELLOW OR WHITE.	140	140 (111 CM)
4	SHAMONG SINGSONG	A SMALL BUSHY PLANT WITH BRANCHES GROWING FROM 4 TO 7 METERS HIGH. LEAVES ARE 5 TO 10 CM LONG WITH THE BUSHES SLIGHTLY TWISTED. IT IS CULTIVATED AS AN ORNAMENTAL TREE FOR ITS BRILLIANT FLOWERS.	42	42 (1000 TO 1500 CM)
5	CRAPE JASMINE	CRAPE JASMINE OR CRAPANE FLOWER PLANT (SHAMONG SINGSONG). BRANCHES OF THIS PLANT ARE COLORED IN THE PHILIPPINES WITH BRANCHES OF MULTIPLE BRANCHES IN VARIOUS COLORS OF RED, PURPLE, PINK, YELLOW OR WHITE.	140	140 (111 CM)
6	YUCCA	A SHORT FORM OF CRAPANE FLOWER PLANT (SHAMONG SINGSONG). BRANCHES OF THIS PLANT ARE COLORED IN THE PHILIPPINES WITH BRANCHES OF MULTIPLE BRANCHES IN VARIOUS COLORS OF RED, PURPLE, PINK, YELLOW OR WHITE.		110
7	FROG GRASS	A SHORT FORM OF CRAPANE FLOWER PLANT (SHAMONG SINGSONG). BRANCHES OF THIS PLANT ARE COLORED IN THE PHILIPPINES WITH BRANCHES OF MULTIPLE BRANCHES IN VARIOUS COLORS OF RED, PURPLE, PINK, YELLOW OR WHITE.		



- LEGEND:**
- 3 SETS OF TYPICAL LANDSCAPE ASSEMBLY
  - 2 SETS OF TYPICAL LANDSCAPE ASSEMBLY
  - 1 SET OF TYPICAL LANDSCAPE ASSEMBLY

- LANDSCAPING PALLETTE (FOR PLANS)**
- MANILA PALM
  - HAWAIIAN PALM
  - BOUGAINVILLEA
  - SHAMONG SINGSONG
  - CRAPE JASMINE
  - YUCCA
  - FROG GRASS



**BLOW-UP OF CCAC ROADS FOR LANDSCAPE ENHANCEMENT**

	PREPARED BY: <i>[Signature]</i> ENGINEER: <i>[Signature]</i>	CHECKED AND APPROVED BY: <i>[Signature]</i> ARCHITECT: <i>[Signature]</i>	PROJECT: <b>IMPROVEMENT OF SITE DEVELOPMENT WITH CLARK AVIATION CAPITAL</b> CLARK CIVIL AVIATION COMPLEX CLARK AIRPORT ZONE, HABALACAT, PAMPANGA	APPROVED BY: <i>[Signature]</i> ENGR. BRANCO C. AGUILERA AND PRESIDENT FOR BUSINESS DEVELOPMENT AND OPERATIONS CLARK INTERNATIONAL AIRPORT CORPORATION	SHEET CONTENT: <b>GENERAL NOTES BLOW-UP OF CCAC ROADS FOR LANDSCAPE ENHANCEMENT TABULATION OF LANDSCAPE ELEMENTS</b>	REVISIONS:	DATE:	SHEET NO.: <b>A-17/17</b>
	OTHERS:							