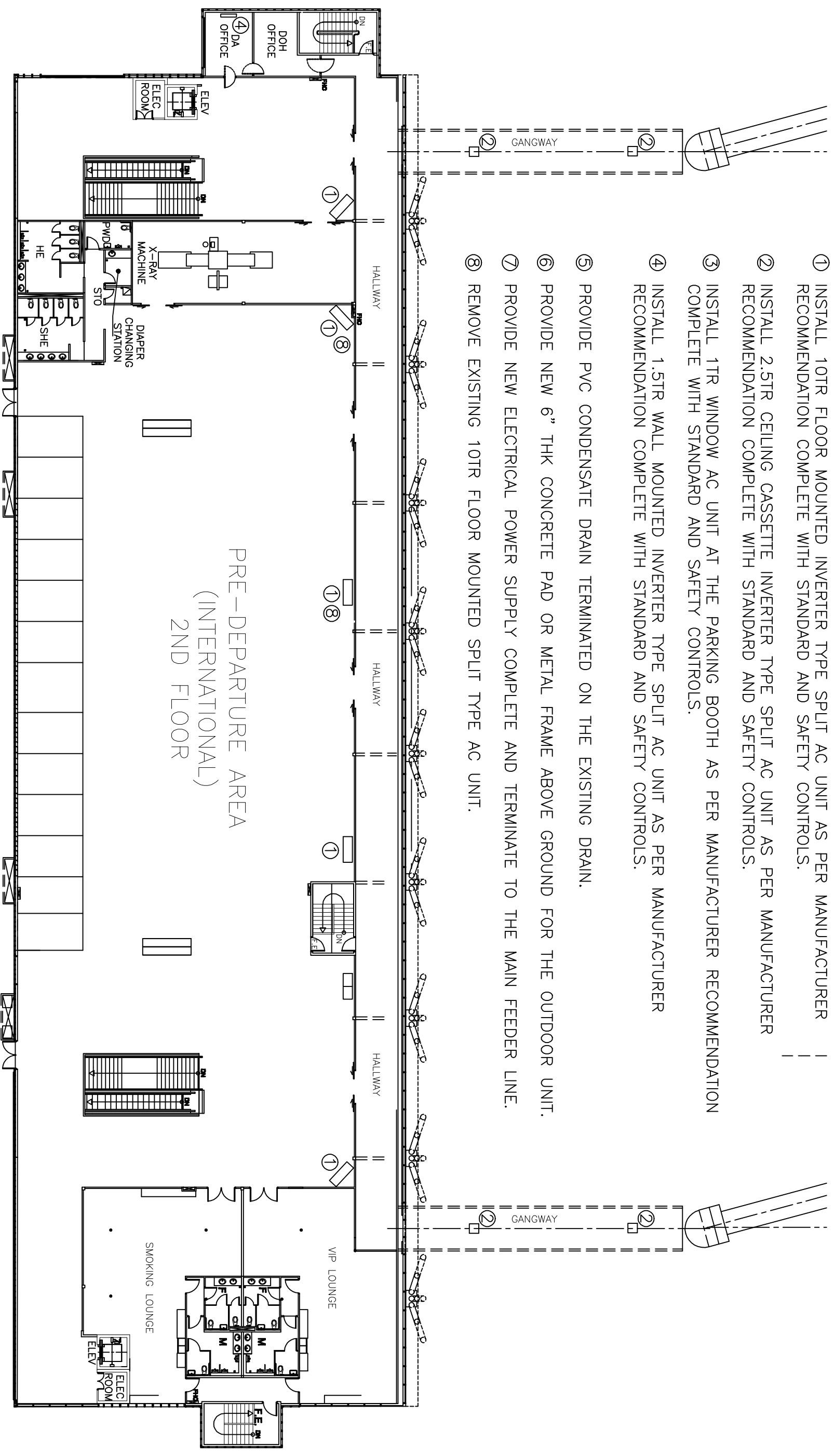


NEW WORK NOTES


- ① INSTALL 10TR FLOOR MOUNTED INVERTER TYPE SPLIT AC UNIT AS PER MANUFACTURER RECOMMENDATION COMPLETE WITH STANDARD AND SAFETY CONTROLS.
- ② INSTALL 2.5TR CEILING CASSETTE INVERTER TYPE SPLIT AC UNIT AS PER MANUFACTURER RECOMMENDATION COMPLETE WITH STANDARD AND SAFETY CONTROLS.
- ③ INSTALL 1TR WINDOW AC UNIT AT THE PARKING BOOTH AS PER MANUFACTURER RECOMMENDATION COMPLETE WITH STANDARD AND SAFETY CONTROLS.
- ④ INSTALL 1.5TR WALL MOUNTED INVERTER TYPE SPLIT AC UNIT AS PER MANUFACTURER RECOMMENDATION COMPLETE WITH STANDARD AND SAFETY CONTROLS.
- ⑤ PROVIDE PVC CONDENSATE DRAIN TERMINATED ON THE EXISTING DRAIN.
- ⑥ PROVIDE NEW 6" THK CONCRETE PAD OR METAL FRAME ABOVE GROUND FOR THE OUTDOOR UNIT.
- ⑦ PROVIDE NEW ELECTRICAL POWER SUPPLY COMPLETE AND TERMINATE TO THE MAIN FEEDER LINE.
- ⑧ REMOVE EXISTING 10TR FLOOR MOUNTED SPLIT TYPE AC UNIT.



PRE-DEPARTURE AREA
(INTERNATIONAL)
2ND FLOOR

MECHANICAL NEW WORK PLAN (SECOND FLOOR PRE DEPT AREA)

NTS

	PROJECT TITLE		DESIGN STAFF		RECOMMENDING APPROVAL		APPROVED BY	
	SUPPLY, INSTALL, AND TESTING & COMMISSIONING OF SPLIT TYPE INVERTER AC AT PTB		VER. FEDERICO S. GARCIA JR. <small>OR. ENGINEER AND MAINTENANCE DEPARTMENT</small>		DAN A. BAUTISTA <small>VP - AIRPORT OPERATIONS MGMT. GRP.</small>		ALEXANDER S. CAUGUIRAN <small>OIC - ACTING PRESIDENT & CEO</small>	
			DISCIPLINE				SHEET NO:	
			MECHANICAL				SHOP DRAWINGS	
							DATE : JANUARY 15, 2017	
							