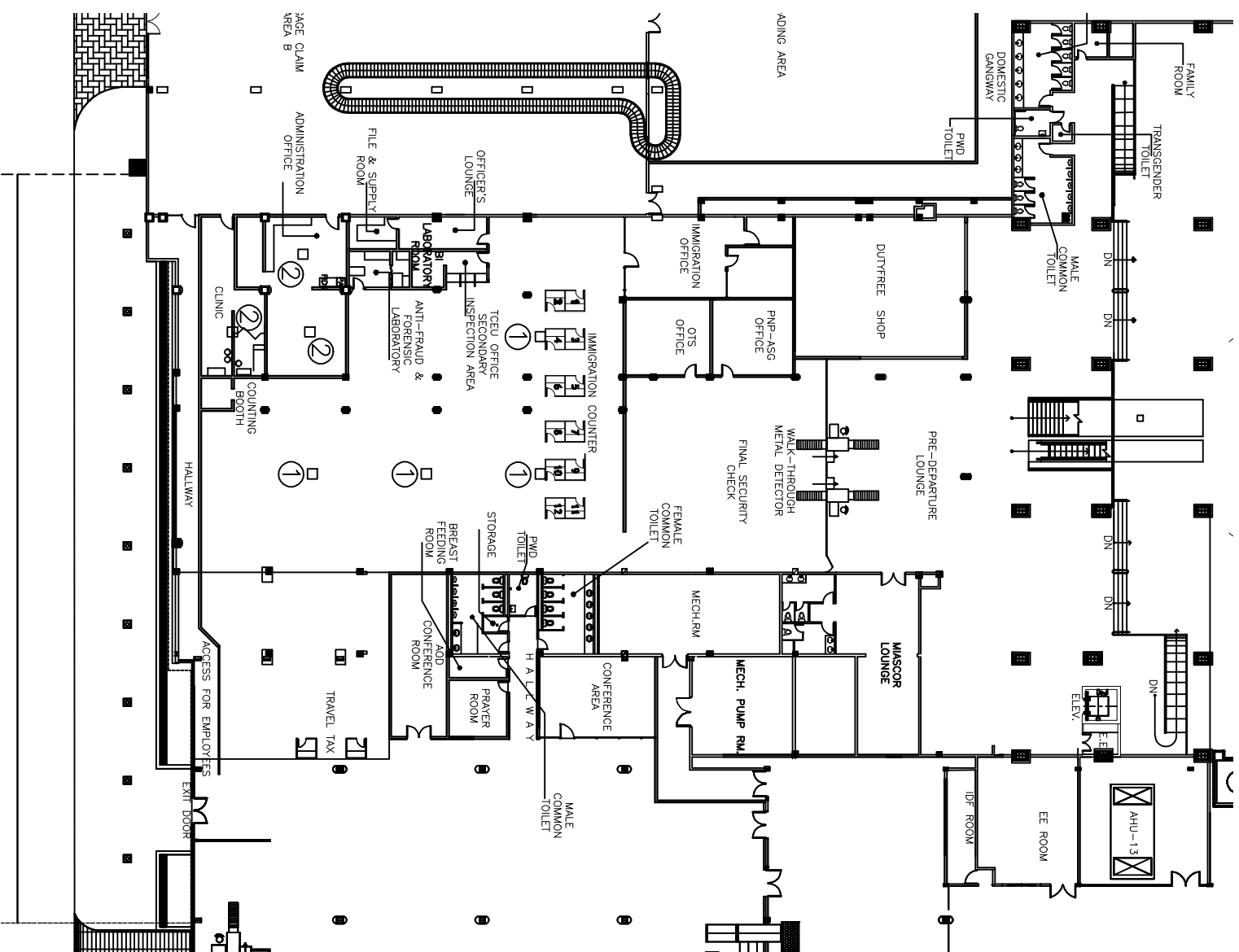


NEW WORK NOTES

- ① INSTALL 3TR CEILING CASSETTE INVERTER TYPE SPLIT AC UNIT AS PER MANUFACTURER RECOMMENDATION COMPLETE WITH STANDARD AND SAFETY CONTROLS.
- ② INSTALL 2.5TR CEILING CASSETTE INVERTER TYPE SPLIT AC UNIT AS PER MANUFACTURER RECOMMENDATION COMPLETE WITH STANDARD AND SAFETY CONTROLS.
- ③ PROVIDE PVC CONDENSATE DRAIN TERMINATED ON THE EXISTING DRAIN FOR THE CEILING CASSETTE
- ④ RE-USE EXISTING METAL FRAME SUPPORT AT THE ROOFDECK.
- ⑤ PROVIDE NEW ELECTRICAL POWER SUPPLY COMPLETE AND TERMINATE TO THE MAIN FEEDER LINE.



MECHANICAL NEW WORK PLAN (PRE DEPT AREA)

SCALE: 1:250

PROJECT TITLE	SUPPLY, INSTALL, AND TESTING & COMMISSIONING OF SPLIT TYPE INVERTER AC AT PTB		
DESIGN STAFF	VERIFIED:	RECOMMENDING APPROVAL	APPROVED BY
	VER. FEDERICO S. GARCIA JR. CC - ENGINEERING AND MAINTENANCE DEPARTMENT	DAN A. BAUTISTA VP - AIRPORT OPERATIONS MGMT. GRP.	ALEXANDER S. CAUGUIRAN OIC - ACTING PRESIDENT & CEO
DISCIPLINE	MECHANICAL		
	SHOP DRAWINGS		
SHEET NO:	M 1-2		
	DATE : JANUARY 15, 2017		

