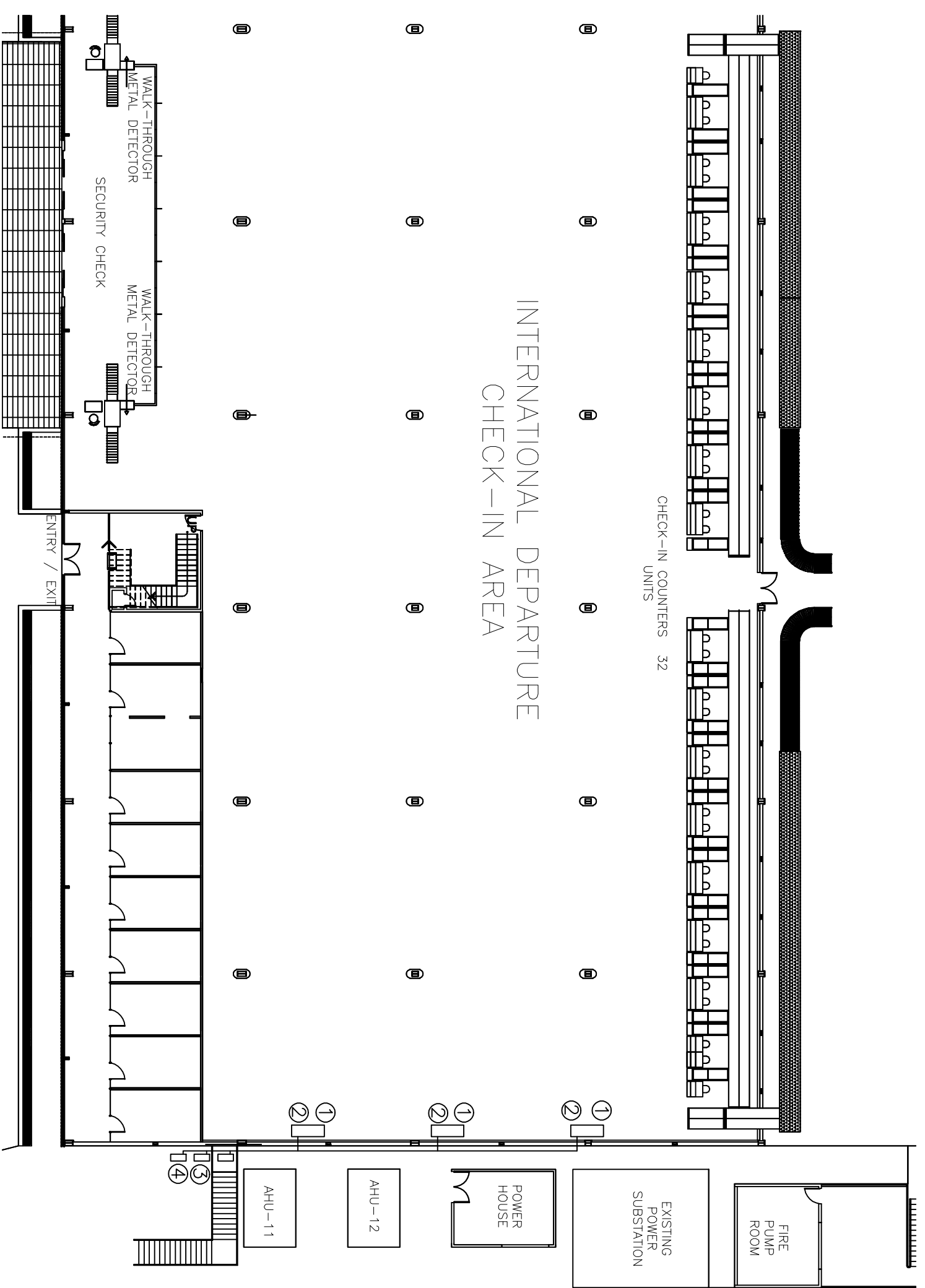


**NEW WORK NOTES**

- ① INSTALL 10TR FLOOR MOUNTED INVERTER TYPE SPLIT AC UNIT AS PER MANUFACTURER RECOMMENDATION COMPLETE WITH STANDARD AND SAFETY CONTROLS.
- ② PROVIDE PVC CONDENSATE DRAIN TERMINATED OUTSIDE (DRAIN TO EARTH).
- ③ INSTALL OUTDOOR UNIT ON 6" THK. PAD OR METAL FRAME ABOVE GROUND.
- ④ PROVIDE NEW ELECTRICAL POWER SUPPLY COMPLETE AND TERMINATE TO THE MAIN FEEDER LINE.



**MECHANICAL NEW WORK PLAN (CHECK-IN AREA)**  
SCALE: 1:250

	<b>PROJECT TITLE</b>		<b>DESIGN STAFF</b>		<b>RECOMMENDING APPROVAL</b>		<b>APPROVED BY</b>		<b>DISCIPLINE</b>	
	<b>SUPPLY, INSTALL, AND TESTING &amp; COMMISSIONING OF SPLIT TYPE INVERTER AC AT PTB</b>		VER. <b>FEDERICO S. GARCIA JR.</b> <small>OR. ENGINEER AND MAINTENANCE DEPARTMENT</small>		<b>DAN A. BAUTISTA</b> <small>VP - AIRPORT OPERATIONS MGMT. GRP.</small>		<b>ALEXANDER S. CAUGUIRAN</b> <small>OIC - ACTING PRESIDENT &amp; CEO</small>		MECHANICAL SHOP DRAWINGS	
DATE : JANUARY 15, 2017										
										<b>SHEET NO:</b> 