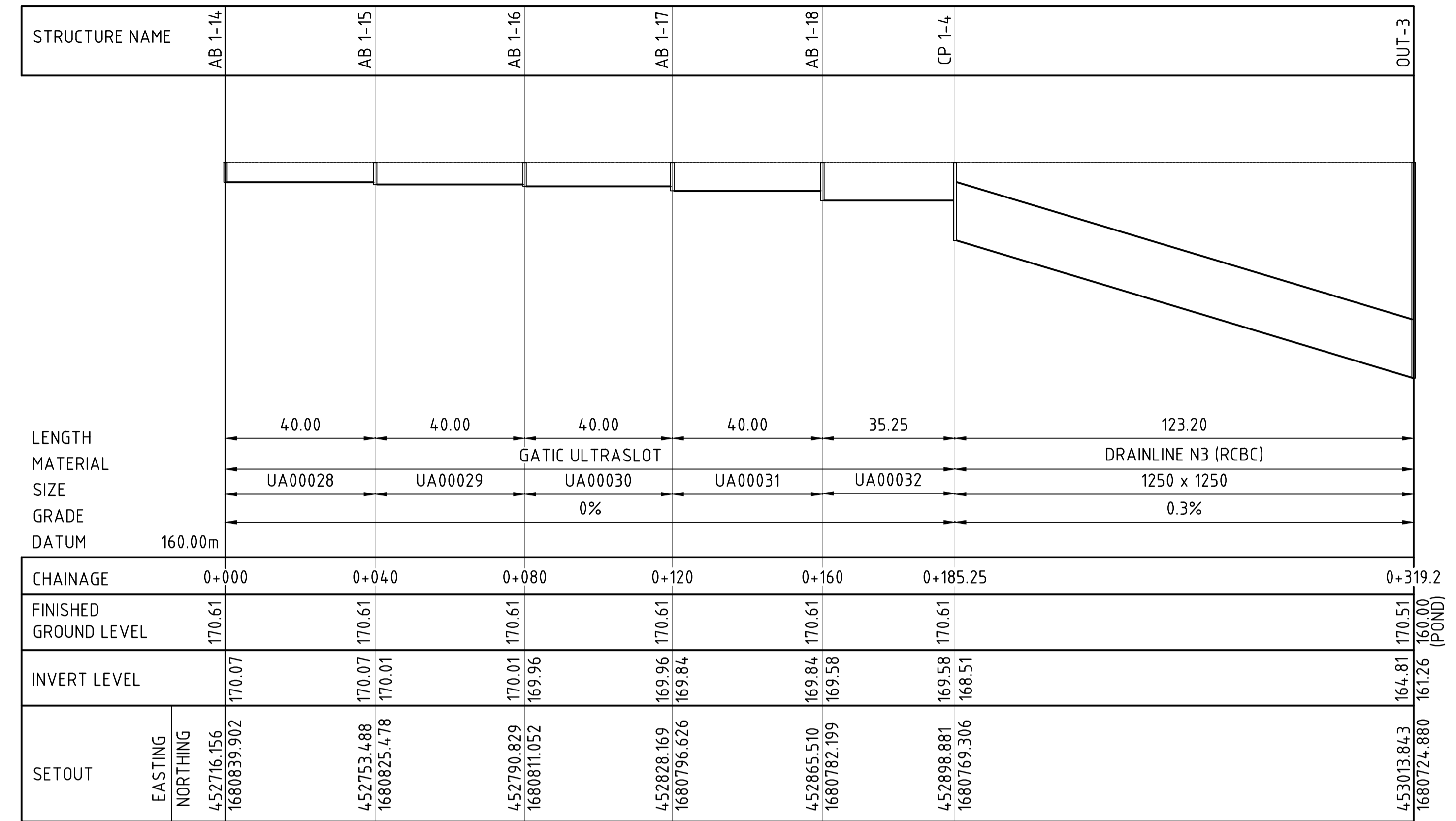
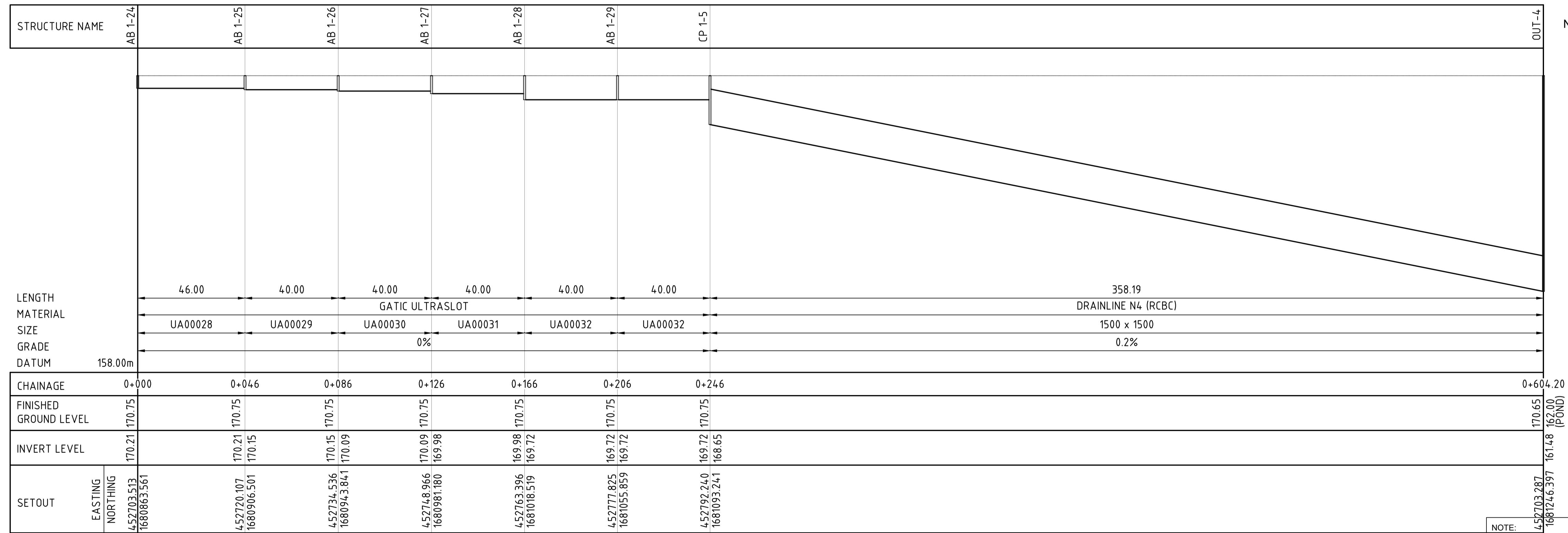


D AB 1-9 TO OUTFALL-2 LONGITUDINAL SECTION
D-5 SCALE: 1:1000H 1:100V



E AB 1-14 TO OUTFALL-3 LONGITUDINAL SECTION
D-5 SCALE: 1:1000H 1:100V



F AB 1-24 TO OUTFALL-4 LONGITUDINAL SECTION
D-5 SCALE: 1:1000H 1:100V

NOTES:

- ALL DIMENSIONS ARE IN MILLIMETERS UNLESS OTHERWISE INDICATED:
- ALL LINEAR DRAINS SHALL BE GATIC ULTRASLOT:
- INSTALLATION OF LINEAR DRAIN SHALL CONFORM TO THE GATIC INSTALLATION, OPERATION AND MAINTENANCE GUIDE
- FOR CATCHPIT (CP) DETAILS, REFER TO DRAWING SHEET NO. D6
- FOR REINFORCED CONCRETE BOX CULVERT (RCBC) DETAILS, REFER TO DRAWING SHEET NO. D7

NOTE:

- IF THIS DRAWING HAS BEEN RECEIVED ELECTRONICALLY, IT IS THE RECIPIENTS RESPONSIBILITY TO PRINT THE DOCUMENT TO THE CORRECT SCALE.
- THIS DRAWING SHOULD BE READ IN CONJUNCTION WITH OTHER RELEVANT DRAWINGS AND SPECIFICATIONS.
- ALL DIMENSION IN METER UNLESS OTHERWISE SHOWN.

CONSULTANTS:	DRAWN BY:	R.A.B.C.	SUBMITTED BY:	RECOMMENDING APPROVAL:	APPROVED BY:	PROJECT TITLE:	DRAWING STATUS:	FINAL	SET NO.	SHEET NO.
Urban Integrated Consultants, Inc. <small>UICI Corporate Bldg., 8 Landa Street, VASRA, Diliman, Quezon City, 1128</small>	CHECKED BY:	R.D.C.	EFREN L. DAVID PRESIDENT - UICI	JAIME ALBERTO C. MELO VICE PRESIDENT AIRPORT OPERATION MANAGEMENT GROUP	ALEXANDER S. CAUGUIRAN PRESIDENT / CHIEF EXECUTIVE OFFICER	CONSTRUCTION OF THE HORIZONTAL INFRASTRUCTURE PROJECT OF THE CLARK INTERNATIONAL AIRPORT NEW TERMINAL BUILDING PROJECT (FORMERLY CLARK AIRPORT LOW COST TERMINAL)	REVISION Δ:	JULY 9, 2018	D-5	113 116
	DWGS. CHK. BY:	A.T.C.					REVISION Δ:	JULY 16, 2018		
								SHEET CONTENTS:	LINEAR DRAIN AND RCBC PROFILES	

